

B \flat Bass

WALZER-ARIE N° 6

- Trombone & Wind Band -

Jos. Serafini-Alschausky
arr. José SCHYNS

Allegro risoluto $\text{♩} = 72$



A Piu lento $\text{♩} = 100$



Piu largo



B Allegro risoluto $\text{♩} = 72$



Piu lento $\text{♩} = 100$

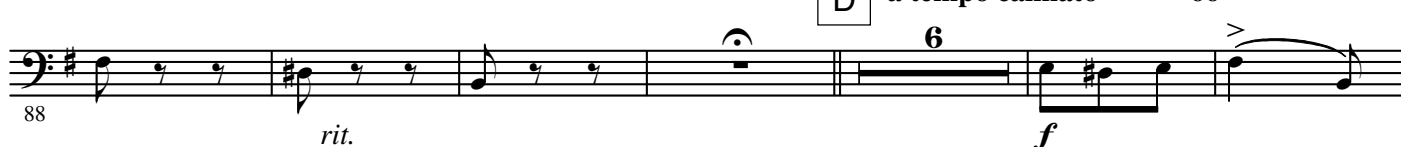


a tempo

C Allegro molto $\text{♩} = 96$



D a tempo calmato $\text{♩} = 66$



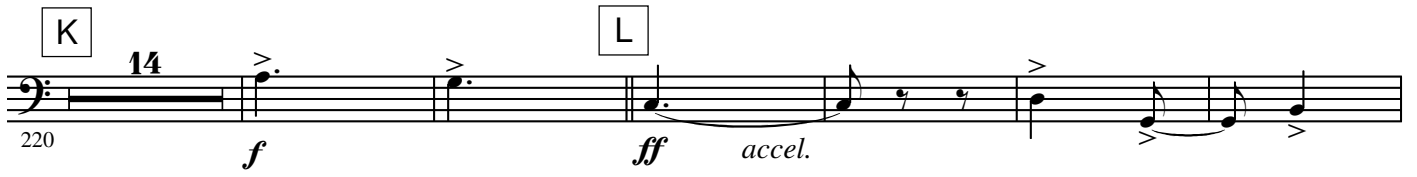
a tempo

E



2.

- B \flat Bass -



4.

- B \flat Bass -Vivace $\text{♩} = 88$ 