

WALZER-ARIE N° 6

E♭ Bass

- Trombone & Wind Band -

Jos. Serafini-Alschausky
arr. José SCHYNS

Allegro risoluto ♩ = 72



A Piu lento ♩ = 100



Piu largo



B Allegro risoluto ♩ = 72



Piu lento ♩ = 100

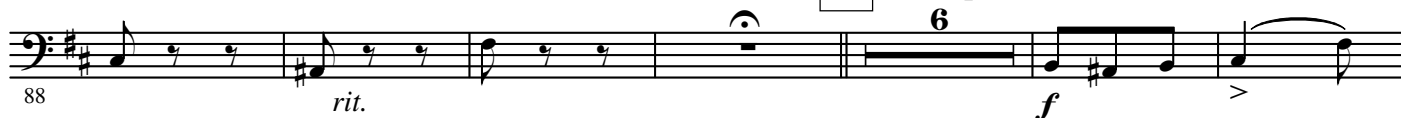


a tempo

C Allegro molto ♩ = 96



D a tempo calmato ♩ = 66



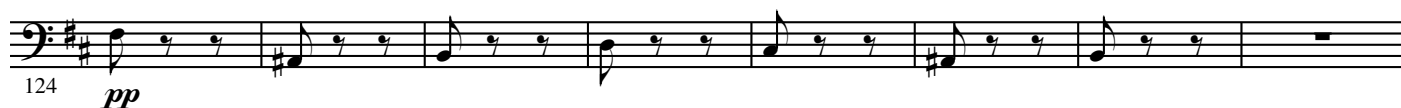
a tempo

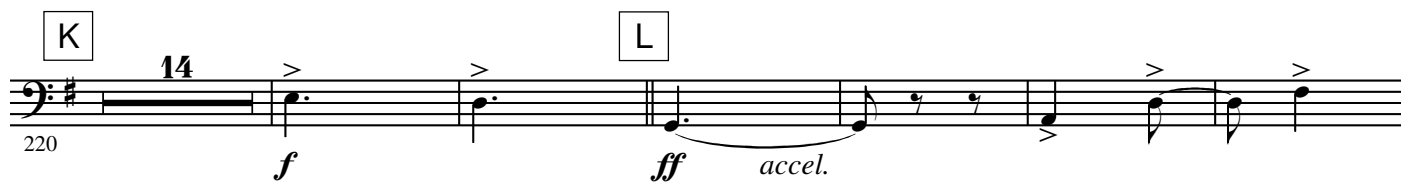
E



2.

- E♭ Bass -





4.

- E♭ Bass -

Vivace ♩. = 88

