

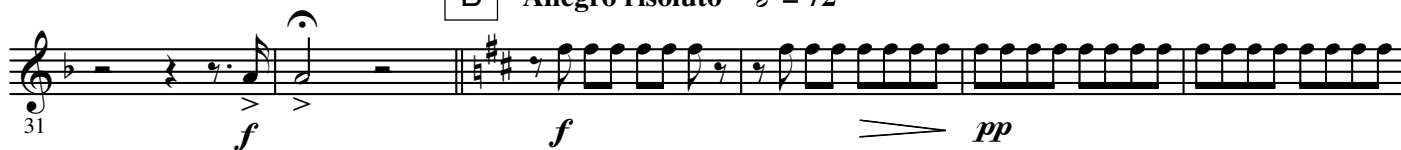
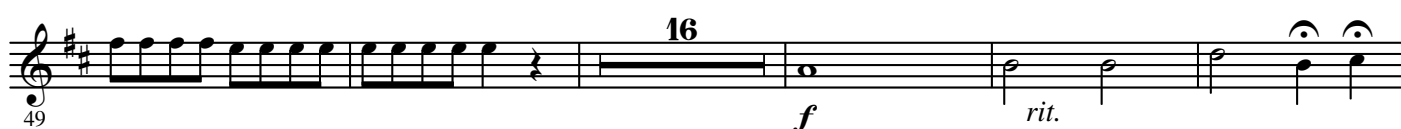
1st E \flat Horn

WALZER-ARIE N° 6

- Trombone & Wind Band -

Jos. Serafini-Alschausky
arr. José SCHYNSAllegro risoluto $\text{♩} = 72$ A Piu lento $\text{♩} = 100$

Piu largo

B Allegro risoluto $\text{♩} = 72$ Piu lento $\text{♩} = 100$ 

a tempo

C Allegro molto $\text{♩} = 96$ 

2.

- 1st E♭ Horn -

86 *rit.* **D** a tempo calmato $\text{♩} = 66$ **E** 16 11

119 *p rit.* a tempo 12 *rit.*

138 **F** Allegro $\text{♩} = 72$ *f*

148 **G**

158

168 **H** Meno mosso $\text{♩} = 66$ *f* 6

182 **I** 6 *p*

198 **J** 6 *f*

214 **K**

224

234 **L** *ff accel.*

Presto $\text{♩} = 80$

