

B \flat Bass

CONCHIN Y CONCHI

A. P. Perelló

Paso Doble

Allegro moderato $\text{♩} = 108$

1 *f* *p*

9 *f* *p* *p* (A)

17 *mf* (B)

26

35

44 1^a 2 (C) *ff* 3 3 3 3

52 3 3

60 (D)

69

78 (E) one *p* All *mf*

87 (F)



TRIO



ff



Dim poco a poco

p

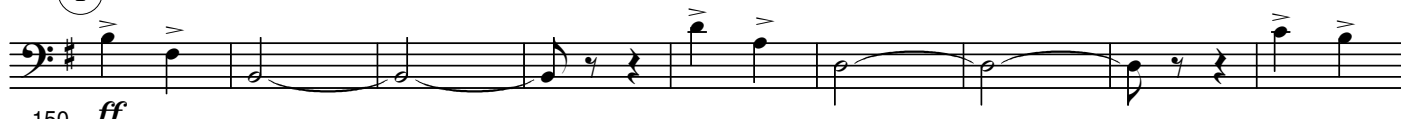
(G)



(H)



(I)



ff

(J) *a tempo*



Poco rit

f



(K)



189