

2nd B♭ Trombone

CONCHIN Y CONCHI

Paso Doble

A. P. Perelló

Allegro moderato ♩ = 108

1 *f*

11 *p* **A** *mf* **B**

33

41 *ff* **C**

48

55

62 **D**

70

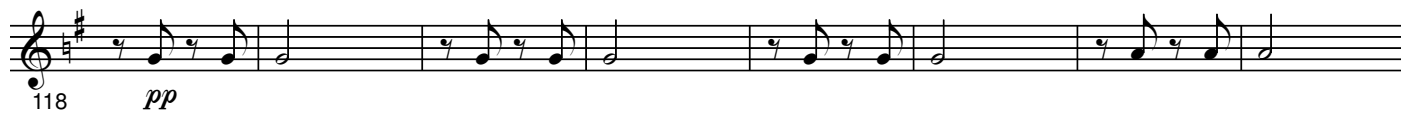
78 *mf* **E** **F**

101

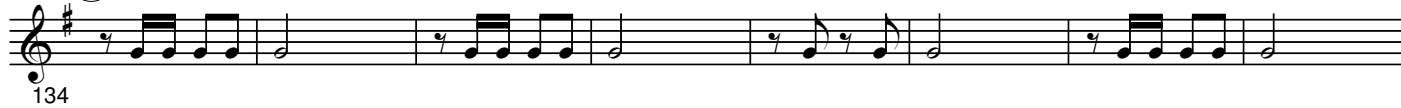
TRIO

109 *ff*

G



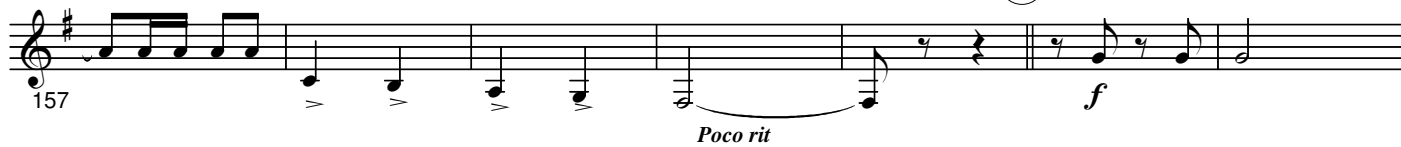
H



I



J a tempo



K

