

CONCHIN Y CONCHI

A. P. Perelló

4th B \flat Trombone

Paso Doble

Allegro moderato $\text{♩} = 108$

1 *f*

11 *p* *mf*

33

41 *ff*

48

55

62

70

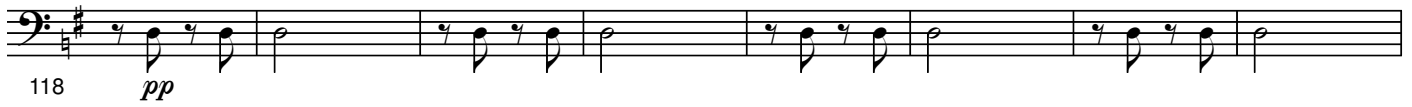
78 *mf*

101

109 *ff*

TRIO

(G)



(H)



(I)



(J) a tempo



(K)

