

B \flat Bass $\text{B}\flat$ **EL ARQUITECTO**

A. P. Perelló

Paso Doble

Allegro moderato $\text{♩} = 96$

1 *pp* *cresc.* *f*

8 *pp* *cresc.*

16 *ff* *pp* *p* **A**

24 *f*

32 *dim* *p* **B**

40 *ff*

48 *p* *ff* **C**

56 *p*

64 1 2^a

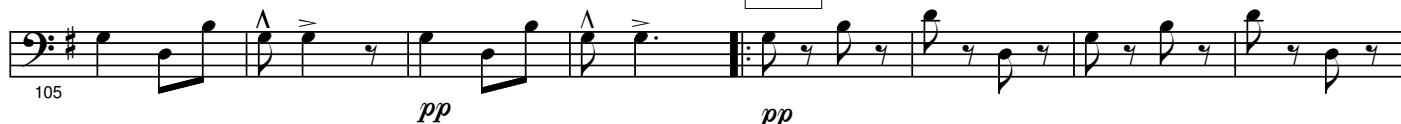
72 *p* **D**

81 *f* *dim*

E



Trio



F



G



H



I

