

4th B \flat Trombone**EL ARQUITECTO**

A. P. Perelló

Paso Doble

Allegro moderato $\text{♩} = 96$

1 *pp* *cresc.* *f*

9 *pp* *cresc.* *ff*

17 *pp* *p*

25 *f*

33 *p*

43 *ff*

50 *p* *ff* *simile*

58 *ff*

73 *p*

81 *f* *p*

91 *f*

A

B

C

D

E



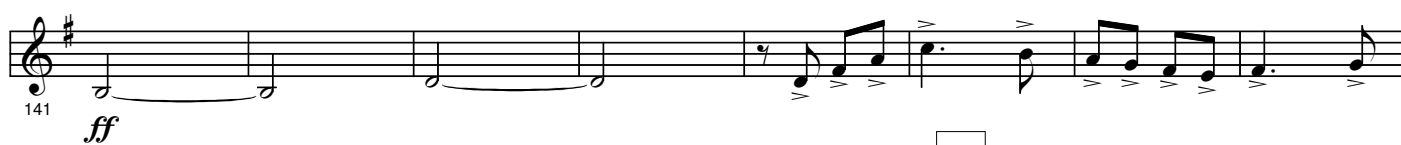
Trio



F



G



H



I

