

NUTCRACKER SUITE

3rd B \flat Trombone b

Peter Illitch TCHAIKOVSKY

Arr. José SCHYNS

I. Overture Miniature

Allegro giusto

1

A 16 **B** 16 **C** 24 **D** 33 16

E 24 **F** 16 **G** 20 **H** 16

Tempo di marcia viva

II. March

183

A 8 **B** 8 2

204

C 7 **D** 8

223

E 8 **F** 3

238

G 2

247

H 3

255

263

2.

- 3rd B \flat Trombone -

III. Dance of the Sugar Plum Fairy

271 **Andante non troppo**

16 20 8 8

A B C

Tempo di trepak, molto vivace

IV. Trepak

323

16 5

A

ff *ff* *ff* *ff*

350

5 3 6

B

mf *mf*

368

2

C

ff

376

383

390 **Stringendo**

fff

398

V. Arabian Dance

407 **Allegretto**

21 20 19 17 25

A B C D

VI. Chinese Dance

509 **Allegro moderato**

16 15

A

541 **Moderato assai** **A** 18 **B** 16 **C** 8 *p*

586 **D**

592

598 **E** 9 8

VIII. Waltz of the Flowers

618 **Tempo di Valse** **A** a tempo 32 **B** 20 **C** 16

687 **C** *mf*

694 1

701 2 *ff*

707 **D** 16 **E** 16

4.

- 3rd B \flat Trombone -

739

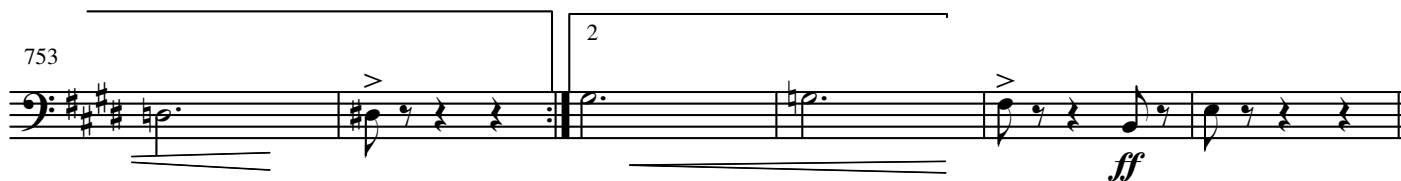
F



746



753



759

G

H

I

J



832



839

K



849



856

L



863



870

M



877

A musical staff in bass clef with a key signature of three sharps (F#, C#, G#). The melody consists of seven measures, each containing a single half note. The notes are: F#3, C#3, G#2, F#3, C#3, G#2, and F#3. The notes are written on the lines and spaces of the staff: F# on the first line, C# on the first space, G# on the second line, F# on the second space, C# on the third line, G# on the third space, and F# on the fourth line.

884

[illegible]

891

891

p

ff

897

The bass line is written on a single staff with a treble clef. The key signature has one sharp (F#). The melody consists of a series of eighth notes, mostly beamed in pairs, with a final measure containing a quarter note and a half note. The notes are: F#4, G#4, A4, B4, C5, D5, E5, F#5, G#5, A5, B5, C6, D6, E6, F#6, G#6, A6, B6, C7, D7, E7, F#7, G#7, A7, B7, C8, D8, E8, F#8, G#8, A8, B8, C9, D9, E9, F#9, G#9, A9, B9, C10, D10, E10, F#10, G#10, A10, B10, C11, D11, E11, F#11, G#11, A11, B11, C12, D12, E12, F#12, G#12, A12, B12, C13, D13, E13, F#13, G#13, A13, B13, C14, D14, E14, F#14, G#14, A14, B14, C15, D15, E15, F#15, G#15, A15, B15, C16, D16, E16, F#16, G#16, A16, B16, C17, D17, E17, F#17, G#17, A17, B17, C18, D18, E18, F#18, G#18, A18, B18, C19, D19, E19, F#19, G#19, A19, B19, C20, D20, E20, F#20, G#20, A20, B20, C21, D21, E21, F#21, G#21, A21, B21, C22, D22, E22, F#22, G#22, A22, B22, C23, D23, E23, F#23, G#23, A23, B23, C24, D24, E24, F#24, G#24, A24, B24, C25, D25, E25, F#25, G#25, A25, B25, C26, D26, E26, F#26, G#26, A26, B26, C27, D27, E27, F#27, G#27, A27, B27, C28, D28, E28, F#28, G#28, A28, B28, C29, D29, E29, F#29, G#29, A29, B29, C30, D30, E30, F#30, G#30, A30, B30, C31, D31, E31, F#31, G#31, A31, B31, C32, D32, E32, F#32, G#32, A32, B32, C33, D33, E33, F#33, G#33, A33, B33, C34, D34, E34, F#34, G#34, A34, B34, C35, D35, E35, F#35, G#35, A35, B35, C36, D36, E36, F#36, G#36, A36, B36, C37, D37, E37, F#37, G#37, A37, B37, C38, D38, E38, F#38, G#38, A38, B38, C39, D39, E39, F#39, G#39, A39, B39, C40, D40, E40, F#40, G#40, A40, B40, C41, D41, E41, F#41, G#41, A41, B41, C42, D42, E42, F#42, G#42, A42, B42, C43, D43, E43, F#43, G#43, A43, B43, C44, D44, E44, F#44, G#44, A44, B44, C45, D45, E45, F#45, G#45, A45, B45, C46, D46, E46, F#46, G#46, A46, B46, C47, D47, E47, F#47, G#47, A47, B47, C48, D48, E48, F#48, G#48, A48, B48, C49, D49, E49, F#49, G#49, A49, B49, C50, D50, E50, F#50, G#50, A50, B50, C51, D51, E51, F#51, G#51, A51, B51, C52, D52, E52, F#52, G#52, A52, B52, C53, D53, E53, F#53, G#53, A53, B53, C54, D54, E54, F#54, G#54, A54, B54, C55, D55, E55, F#55, G#55, A55, B55, C56, D56, E56, F#56, G#56, A56, B56, C57, D57, E57, F#57, G#57, A57, B57, C58, D58, E58, F#58, G#58, A58, B58, C59, D59, E59, F#59, G#59, A59, B59, C60, D60, E60, F#60, G#60, A60, B60, C61, D61, E61, F#61, G#61, A61, B61, C62, D62, E62, F#62, G#62, A62, B62, C63, D63, E63, F#63, G#63, A63, B63, C64, D64, E64, F#64, G#64, A64, B64, C65, D65, E65, F#65, G#65, A65, B65, C66, D66, E66, F#66, G#66, A66, B66, C67, D67, E67, F#67, G#67, A67, B67, C68, D68, E68, F#68, G#68, A68, B68, C69, D69, E69, F#69, G#69, A69, B69, C70, D70, E70, F#70, G#70, A70, B70, C71, D71, E71, F#71, G#71, A71, B71, C72, D72, E72, F#72, G#72, A72, B72, C73, D73, E73, F#73, G#73, A73, B73, C74, D74, E74, F#74, G#74, A74, B74, C75, D75, E75, F#75, G#75, A75, B75, C76, D76, E76, F#76, G#76, A76, B76, C77, D77, E77, F#77, G#77, A77, B77, C78, D78, E78, F#78, G#78, A78, B78, C79, D79, E79, F#79, G#79, A79, B79, C80, D80, E80, F#80, G#80, A80, B80, C81, D81, E81, F#81, G#81, A81, B81, C82, D82, E82, F#82, G#82, A82, B82, C83, D83, E83, F#83, G#83, A83, B83, C84, D84, E84, F#84, G#84, A84, B84, C85, D85, E85, F#85, G#85, A85, B85, C86, D86, E86, F#86, G#86, A86, B86, C87, D87, E87, F#87, G#87, A87, B87, C88, D88, E88, F#88, G#88, A88, B88, C89, D89, E89, F#89, G#89, A89, B89, C90, D90, E90, F#90, G#90, A90, B90, C91, D91, E91, F#91, G#91, A91, B91, C92, D92, E92, F#92, G#92, A92, B92, C93, D93, E93, F#93, G#93, A93, B93, C94, D94, E94, F#94, G#94, A94, B94, C95, D95, E95, F#95, G#95, A95, B95, C96, D96, E96, F#96, G#96, A96, B96, C97, D97, E97, F#97, G#97, A97, B97, C98, D98, E98, F#98, G#98, A98, B98, C99, D99, E99, F#99, G#99, A99, B99, C100, D100, E100, F#100, G#100, A100, B100, C101, D101, E101, F#101, G#101, A101, B101, C102, D102, E102, F#102, G#102, A102, B102, C103, D103, E103, F#103, G#103, A103, B103, C104, D104, E104, F#104, G#104, A104, B104, C105, D105, E105, F#105, G#105, A105, B105, C106, D106, E106, F#106, G#106, A106, B106, C107, D107, E107, F#107, G#107, A107, B107, C108, D108, E108, F#108, G#108, A108, B108, C109, D109, E109, F#109, G#109, A109, B109, C110, D110, E110, F#110, G#110, A110, B110, C111, D111, E111, F#111, G#111, A111, B111, C112, D112, E112, F#112, G#112, A112, B112, C113, D113, E113, F#113, G#113, A113, B113, C114, D114, E114, F#114, G#114, A114, B114, C115, D115, E115, F#115, G#115, A115, B115, C116, D116, E116, F#116, G#116, A116, B116, C117, D117, E117, F#117, G#117, A117, B117, C118, D118, E118, F#118, G#118, A118, B118, C119, D119, E119, F#119, G#119, A119, B119, C120, D120, E120, F#120, G#120, A120, B120, C121, D121, E121, F#121, G#121, A121, B121, C122, D122, E122, F#122, G#122, A122, B122, C123, D123, E123, F#123, G#123, A123, B123, C124, D124, E124, F#124, G#124, A124, B124, C125, D125, E125, F#125, G#125, A125, B125, C126, D126, E126, F#126, G#126, A126, B126, C127, D127, E127, F#127, G#127, A127, B127, C128, D128, E128, F#128, G#128, A128, B128, C129, D129, E129, F#129, G#129, A129, B129, C130, D130, E130, F#130, G#130, A130, B130, C131, D131, E131, F#131, G#131, A131, B131, C132

903

903 N

16

fff

924

924

3

ff

3

0

934

954

2

p *cresc.*

941

The bass line of 'The Rose Tree' is written in 2/4 time. It begins with a treble clef and a key signature of one sharp (F#). The melody starts on a whole note G4, followed by a half note A4, and then a half note B4. This is followed by a half note G4, a half note F#4, and then a half note E4. The melody continues with a half note D4, a half note C4, and then a half note B3. The melody ends with a half note A3 and a half note G3. The dynamic marking *ff* is placed below the staff.

947

947

P

2

6.

- 3rd B \flat Trombone -

953



959



965

