

# NUTCRACKER SUITE

4th E♭ Horn

Peter Illitch TCHAIKOVSKY

Arr. José SCHYNS

## I. Overture Miniature

1 **Allegro giusto**

**A** 16 **B** 24

57 **C** 12 *cue 2nd Hrn.* **D** 2 *f* *pp* *cresc.*

75 *ff*

81

87 **D** 16 **E** 24

130 **F** 16 **G** 16 *pp* *cresc.*

166 **H** *ff*

172

178

## II. March

Tempo di marcia viva

*Play*

183

*p* *mf* *p* *mf* *mf* *f*

191 **A**

*p* *mf* *p* *mf* *f*

199 **B** **C**

*p* *mf* *p* *mf*

214 **D**

*mf* *f* *p* *mf* *p* *mf*

222 **E**

*ff* *mf* *f* *mf*

230 **F**

*f* *f* *f* *f* *f* *f*

238

*f* *ff* *f* *f* *f* *ff*

247 **G** **H**

*f* *f* *f* *f* *f* *f*

262

*f* *ff* *f* *f* *f* *ff*

### III. Dance of the Sugar Plum Fairy

271 **Andante non troppo** **A**

16 5

295

301 **B** 4 8 **C** 8

### IV. Trepak

323 **Tempo di trepak, molto vivace** **cue 2nd Hrn.**

331 **Play** **cue 2nd Hrn.**

339 **A** **Play**

345

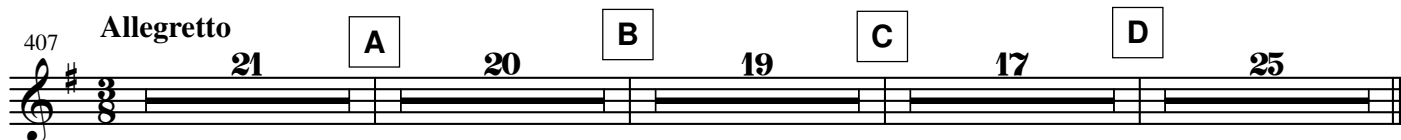
351 **B**

357 2

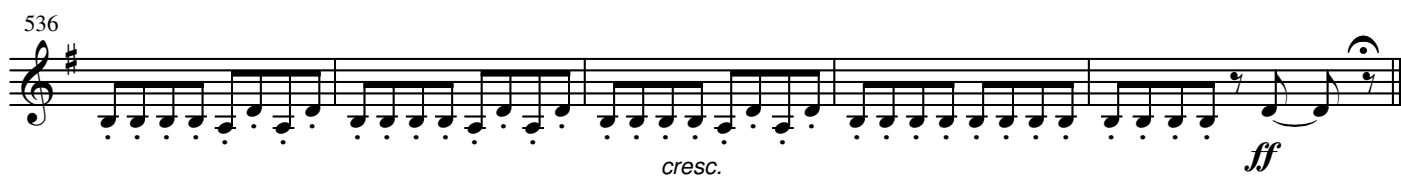
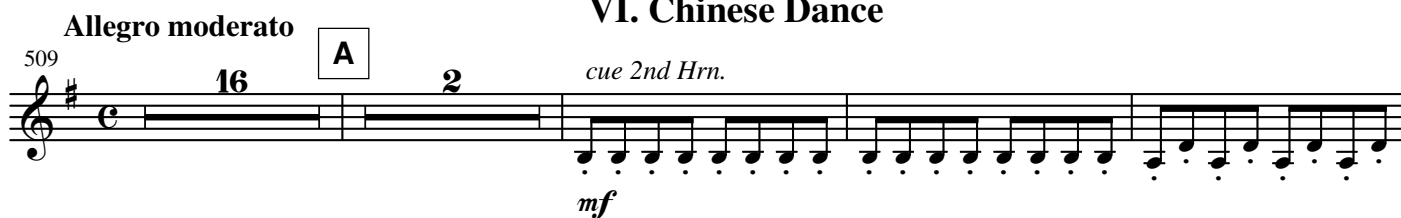
4.

- 4th E $\flat$  Horn -

### V. Arabian Dance



### VI. Chinese Dance



541 **Moderato assai** **A** 18 **B** 16 6 *Play*

*f*

583 **C**

*p*

589 **D**

595

601 **E** 9 6 *f*

*f*

# VIII. Waltz of the Flowers

618 **Tempo di Valse** 4 *f*

*f*

628 *dim.* *p*

*dim.* *p*

635 **A** 15 **a tempo** 4 *dolce cantabile* *p*

*p*

659 **B** 9 *p*

*p*

673 9

6.

- 4th E♭ Horn -

687 **C**

*mf*

695 1

703 2 **D**

*mf* *ff* *mp*

711 9 **E**

*p*

727 9 **F**

*mf*

743

751 1 2

*ff*

759 **G** 16 **H** 14

*mf*

795 3

*p*

805 **I**

*mf* *p*

813

*cresc.* *f*

821

**J**

*p* *cresc.* *f* *ff*

840

**K**

*mf*

850

**L**

*f* *mf*

865

**M**

*mf*

881

*ff*

889

*ff*

897

**N**

*p*

905

*pp* *cresc.*

913

*mf* *cresc.* *fff*

8.

- 4th E♭ Horn -

921

*ff*

929

O

936

*p* *cresc.*

943

*ff*

950

P *p* *cresc.*

957

*fff*

964