

Dedicated to Christian CHUFFART and Patrick SALMON
DIVERTIMENTO FOR WIND ORCHESTRA

- Wind Band -

André WAIGNEIN

B \flat Trombone 3 


The musical score for B-flat Trombone 3 is written on a single staff in G major (one sharp) and common time. It begins with a tempo marking of quarter note = 120. The score is divided into measures 1 through 59. Measure 1 contains a whole rest with an '8' above it. Measure 2 starts with a forte (*f*) dynamic and a 2/4 time signature change, followed by eighth-note patterns. Measure 3 continues the eighth-note pattern. Measure 4 has a half note. Measure 5 has a half note. Measure 6 has a half note. Measure 7 has a half note. Measure 8 has a half note. Measure 9 has a half note. Measure 10 has a half note. Measure 11 has a half note. Measure 12 has a half note. Measure 13 has a half note. Measure 14 starts with a new section marked 'A' and contains eighth-note patterns. Measure 15 has a half note. Measure 16 has a half note. Measure 17 has a half note. Measure 18 has a half note. Measure 19 has a half note. Measure 20 has a half note. Measure 21 has a half note. Measure 22 has a half note. Measure 23 has a half note. Measure 24 has a half note. Measure 25 has a half note. Measure 26 has a half note. Measure 27 starts with a new section marked 'B' and contains eighth-note patterns with accents. Measure 28 has a half note. Measure 29 has a half note. Measure 30 has a half note. Measure 31 has a half note. Measure 32 has a half note. Measure 33 has a half note. Measure 34 has a half note. Measure 35 starts with a new section marked 'C' and contains eighth-note patterns. Measure 36 has a half note. Measure 37 has a half note. Measure 38 has a half note. Measure 39 has a half note. Measure 40 has a half note. Measure 41 has a half note. Measure 42 has a half note. Measure 43 starts with a new section marked 'D' and contains eighth-note patterns. Measure 44 has a half note. Measure 45 has a half note. Measure 46 has a half note. Measure 47 has a half note. Measure 48 has a half note. Measure 49 has a half note. Measure 50 has a half note. Measure 51 starts with a new section marked 'E' and contains eighth-note patterns. Measure 52 has a half note. Measure 53 has a half note. Measure 54 has a half note. Measure 55 has a half note. Measure 56 has a half note. Measure 57 has a half note. Measure 58 has a half note. Measure 59 has a half note. Dynamics include *f* (forte), *mf* (mezzo-forte), and *mp* (mezzo-piano). There are also crescendo and decrescendo markings.

68 F 2

79 *mp* *ff* *mf* 1

87 2 G $\bullet = 84$ *ff* *pp* *pp*

95 H

105 *mf* *mp*

115 I *mf* *f*

122 1 2 J *Poco piu lento* 8

136 *Rit.* **K** $\bullet = 126$

mf *ff* 2 2

145

152 **L**

160 *Accelerando...*

M $\bullet = 144$

168 *mf*

178

N

188 *ff*

O

198 *mf*

208

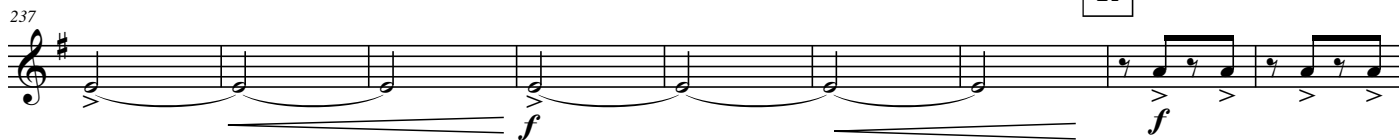
P

218 *f*

Q



R



S

