

IL SIGNOR BRUSCHINO

Wind Band

Arr. José SCHYNS

1st E \flat Horn

Allegro $\text{♩} = \text{c. } 100$

Allegro 3/4 c. 100

8

25

39

46

53

60

67

74

f

p

f

p

f

p

cresc.

mf

cresc.

f

A

B

C

D

E

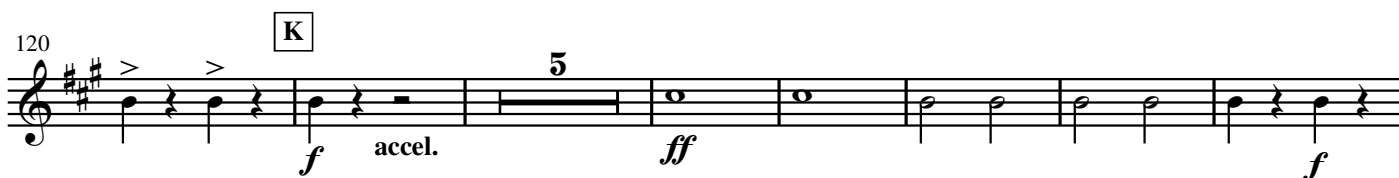
F

G

Piu mosso

9

$\text{♩} = \text{c. } 126$

89 **H** **Meno mosso** ($\text{♩} = \text{c. } 100$)

182 **P**

p cresc.

189 **Q**

f

10

206 **R** ♩ = c. 100

p

214

pp

222 **S**

cresc. poco à poco

230 **T**

f cresc. ff accel.

238 **U**

ff f

(♩ = c. 126)

248

f

256 **V**

mf cresc. ff

265

f