

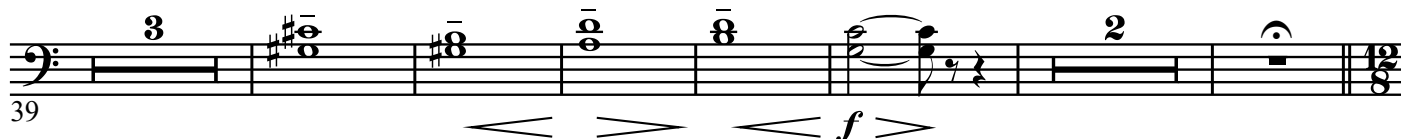
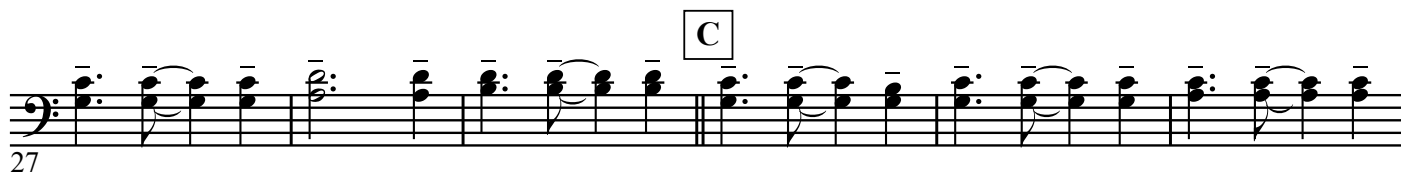
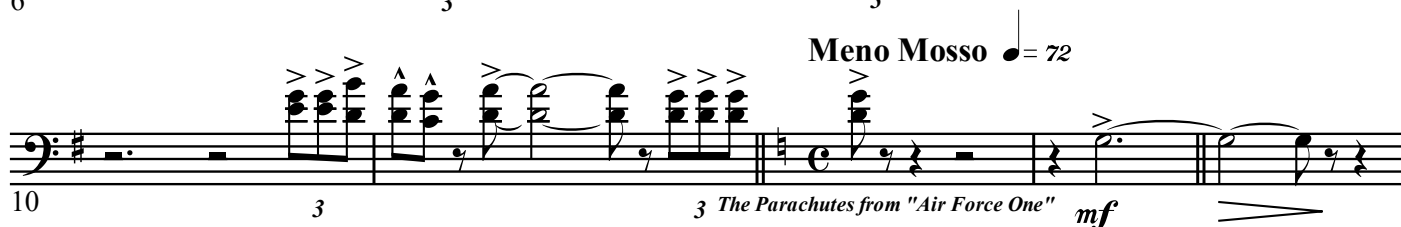
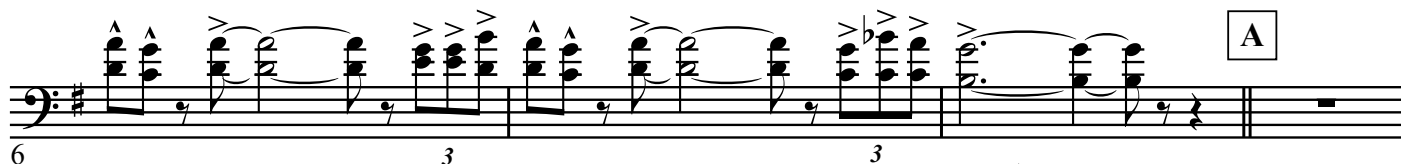
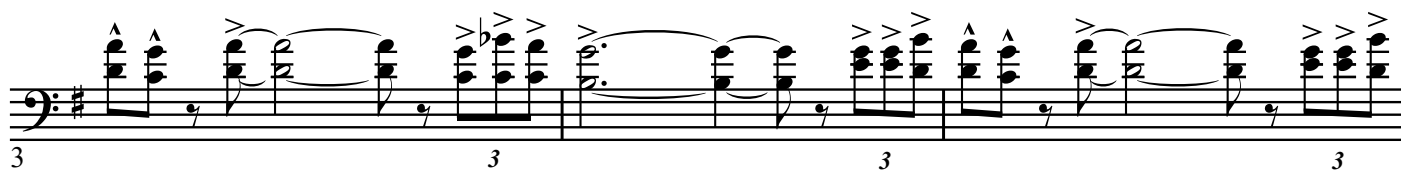
1st & 2nd B \flat Trombones

Goldsmith !

Jerry Goldsmith

arr. : Roland Smeets

Con Brio $\text{♩} = 96$



D Marziale $\bullet = 112$

50 *f* Main Theme from "Star Trek - The Movie"

54

58

E
64

69

74

Tempo di Valse **F** **G** **H** *legato*
78 *mf* Theme from "Papillon"

117 *cresc.*

molto rit. Tempo I° *f*
126

I *legato* *f*
136

144

J

Staff 144-152: Bass clef, key of B-flat major. Measures 144-152. Measure 144 has a sharp sign above the staff. Measure 145 has a box labeled 'J'. Measures 146-152 contain various chords and single notes with accents.

153

March Tempo $\text{♩} = 120$ **K**

Main Title from "Patton"

mp

Staff 153-160: Bass clef, key of B-flat major. Measures 153-160. Measure 153 has a box labeled 'K'. Measures 154-160 contain various chords and single notes. Measure 154 has a '5' below it. Measure 155 has a '12' and '8' below it. Measure 156 has an '8' below it. Measure 157 has a '5' below it. Measure 158 has a '2' below it. Measure 159 has a '5' below it. Measure 160 has a '5' below it. The tempo is marked 'March Tempo' with a quarter note equal to 120. The dynamic is marked 'mp'.

171

L

f

Staff 171-175: Bass clef, key of B-flat major. Measures 171-175. Measure 171 has a box labeled 'L'. Measures 172-175 contain various chords and single notes. Measure 171 has a '2' below it. The dynamic is marked 'f'.

176

Staff 176-179: Bass clef, key of B-flat major. Measures 176-179. Measures 176-179 contain various chords and single notes.

180

mf

Staff 180-185: Bass clef, key of B-flat major. Measures 180-185. Measures 180-185 contain various chords and single notes. Measure 180 has a '2' below it. Measure 181 has a '2' below it. Measure 182 has a '2' below it. Measure 183 has a '2' below it. Measure 184 has a '2' below it. Measure 185 has a '2' below it. The dynamic is marked 'mf'.

186

M

3

Staff 186-192: Bass clef, key of B-flat major. Measures 186-192. Measures 186-192 contain various chords and single notes. Measure 186 has a '3' below it. Measure 187 has a '3' below it. Measure 188 has a '3' below it. Measure 189 has a '3' below it. Measure 190 has a '3' below it. Measure 191 has a '3' below it. Measure 192 has a '3' below it. The dynamic is marked '3'.

193

cresc.

f

Staff 193-197: Bass clef, key of B-flat major. Measures 193-197. Measures 193-197 contain various chords and single notes. Measure 193 has a 'cresc.' below it. Measure 194 has a 'cresc.' below it. Measure 195 has a 'cresc.' below it. Measure 196 has a 'cresc.' below it. Measure 197 has a 'cresc.' below it. The dynamic is marked 'f'.

198

Staff 198-202: Bass clef, key of B-flat major. Measures 198-202. Measures 198-202 contain various chords and single notes.

203

fp e cresc.

Staff 203-207: Bass clef, key of B-flat major. Measures 203-207. Measures 203-207 contain various chords and single notes. Measure 203 has a 'fp e cresc.' below it. Measure 204 has a 'fp e cresc.' below it. Measure 205 has a 'fp e cresc.' below it. Measure 206 has a 'fp e cresc.' below it. Measure 207 has a 'fp e cresc.' below it. The dynamic is marked 'fp e cresc.'.