

Serenate sulla Soglia del Paradiso

B♭ Bass

Hardy MERTENS

1. Very Fast

1

10

mf *f*

Fine

17

ff *mf* *f* *mf* *f* *mf* *f* *mf* *f*

22

mf *f* *mf* *f* *mf* *f* *mf* *f* *al Fine*

2. Fast Waltz

26

f *p*

33

f

Fine

40

p *f* *ff* *f* *one*

24

70

p *al Fine*

2.

- B \flat Bass -

3. Lazy



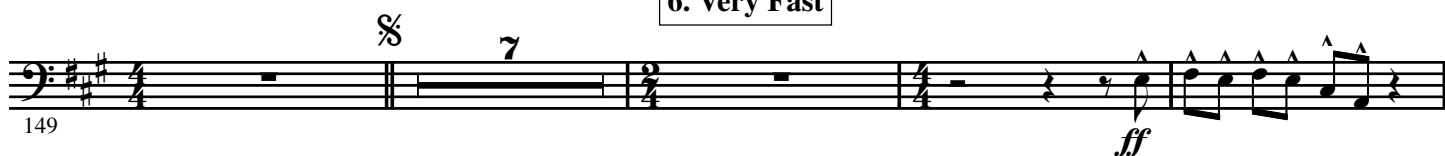
4. Easy going Waltz



5. Slow



6. Very Fast

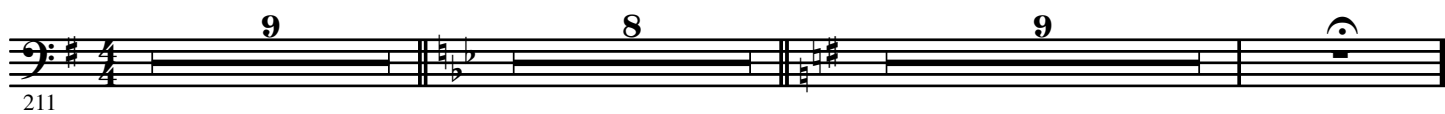


7. Fast Waltz





8. Elegy



9. Fast



A



4.

- B \flat Bass -

254 **B** *mf* *ff* *mf*

259 *ff* *mf* *ff* *mf* *ff* *mf*

263 **C** *ff* *mf* *ff* *mf* *ff*

267 *mf* *p*

271 **D** *ff* *mf*

276 *ff* *mf* *ff* *mf*

280 *ff* *mf* *ff* *mf* *ff* *mf* *ff* *ff*