

# Serenate sulla Soglia del Paradiso

3rd E $\flat$  Horn

Hardy MERTENS

## 1. Very Fast

1 *mf* *f* *mf* *f* Fine *ff* al Fine

## 2. Fast Waltz

26 *ff* *p* Fine *p* *p* *f* al Fine

## 3. Lazy

76 *mf* *f* stopped *f* 5

2.

- 3rd E♭ Horn -

## 4. Easy going Waltz

101 *Open* *f* *Fine* *ff* *Da Capo al Fine*

108 12

Musical score for '4. Easy going Waltz' in 3/4 time, key of B-flat major. It consists of two staves. The first staff starts at measure 101 with a whole rest for 4 measures, then a series of eighth notes. The second staff starts at measure 108 with a half note, followed by a whole rest for 7 measures, then a half note, and finally a whole rest for 12 measures. Dynamics include *f* and *ff*. The piece ends with 'Fine' and 'Da Capo al Fine'.

## 5. Slow

129 *Rubato style Intermezzo* 1 2 10

Musical score for '5. Slow' in 4/4 time, key of B-flat major. It consists of two staves. The first staff starts at measure 129 with a whole rest for 5 measures, then a half note, and finally a whole rest for 10 measures. The second staff continues with a whole rest for 10 measures. Dynamics include *Rubato style Intermezzo*. The piece ends with a fermata.

## 6. Very Fast

149 7 5 *Fine* *mf* *ff* *al Fine*

163 8

Musical score for '6. Very Fast' in 4/4 time, key of D major. It consists of two staves. The first staff starts at measure 149 with a whole rest for 7 measures, then a half note, and finally a whole rest for 5 measures. The second staff starts at measure 163 with a series of eighth notes, then a half note, and finally a whole rest for 8 measures. Dynamics include *mf* and *ff*. The piece ends with 'Fine' and 'al Fine'.

## 7. Fast Waltz

175 *f* *ff* *Fine* *mf* *p* *mf* *p* *al Fine*

183 4

191 4

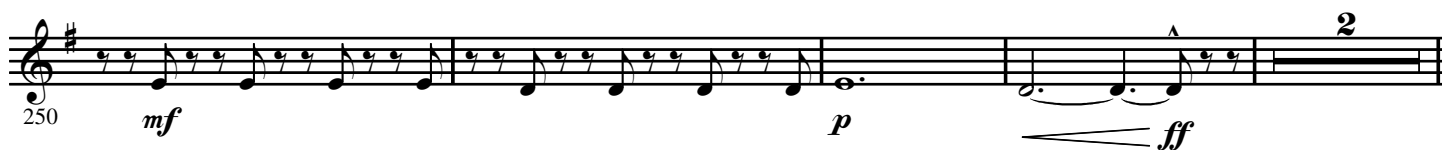
201

Musical score for '7. Fast Waltz' in 3/4 time, key of D major. It consists of four staves. The first staff starts at measure 175 with a series of eighth notes, then a half note, and finally a whole rest for 4 measures. The second staff continues with a series of eighth notes, then a half note, and finally a whole rest for 4 measures. The third staff starts at measure 191 with a series of eighth notes, then a half note, and finally a whole rest for 4 measures. The fourth staff starts at measure 201 with a series of eighth notes, then a half note, and finally a whole rest for 4 measures. Dynamics include *f*, *ff*, *mf*, and *p*. The piece ends with 'Fine' and 'al Fine'.

8. Elegy



9. Fast



4.

- 3rd E $\flat$  Horn -

2

D

272

*mf*

277

*mf*

281

*ff*

*ff*