

## 1st B♭ Trombone

## SWAN LAKE SUITE

Peter Illitch TCHAIKOVSKY

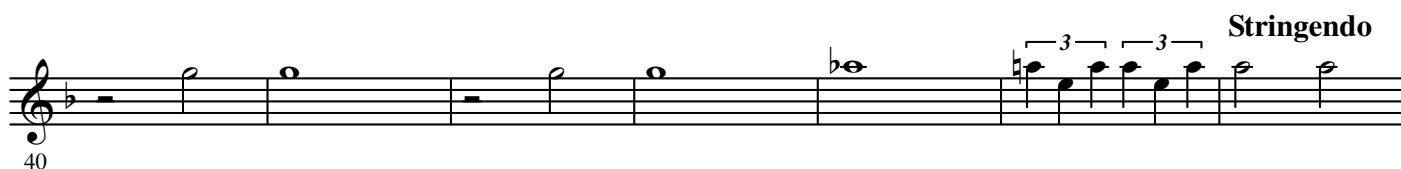
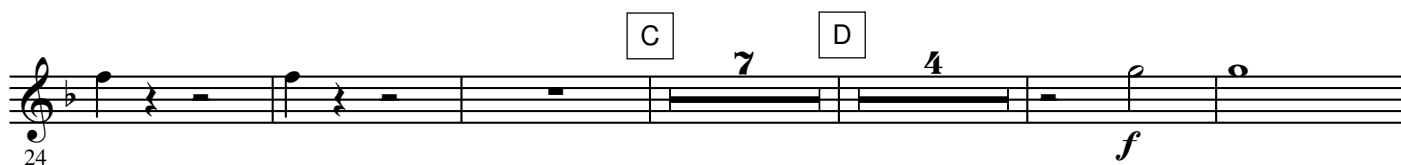
Arr. José SCHYNS

## N° 1 Scène

Moderato

A

B



Stringendo



E

Più mosso



F

## N° 2 Valse

INTRADA

Tempo di Valse

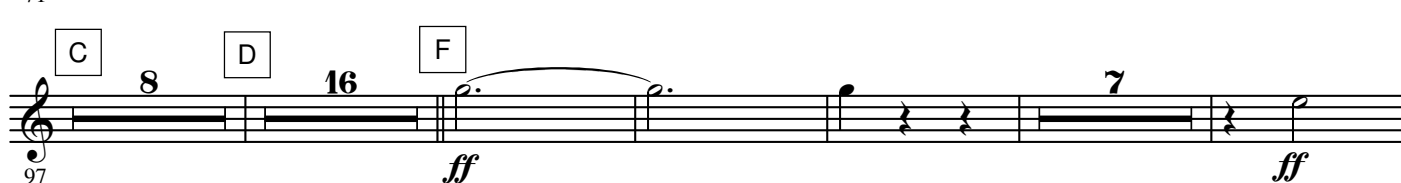


A

VALSE

B

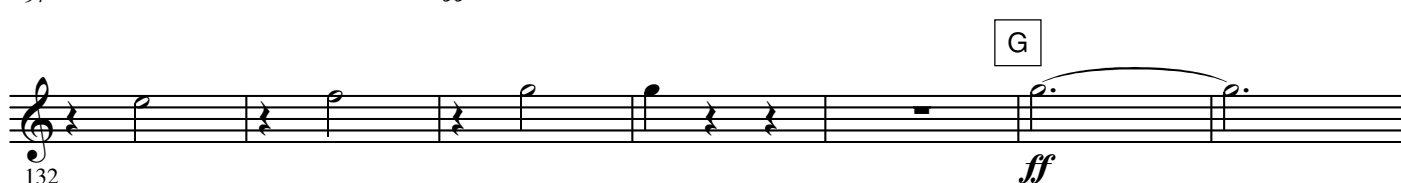
%



C

D

F



G



FINE

al CODA



H

I

J

K

2.

- 1st B $\flat$  Trombone -

6 L

185 *ff*

This staff contains measures 185 to 198. It begins with a six-measure rest, followed by a series of eighth and quarter notes, mostly on a half-note line, with some grace notes. The dynamic is *ff*.

199

D.S. al FINE

This staff contains measures 199 to 206. It continues the melodic line from the previous staff, ending with a double bar line and a key signature change to two flats.

M CODA 15 N

207 *mf*

This staff contains measures 207 to 227. It starts with a 15-measure rest, followed by a repeat sign and a 15-measure rest, then a 2-measure rest, and finally a melodic phrase starting with a *mf* dynamic.

228

This staff contains measures 228 to 237, featuring a continuous melodic line of eighth and quarter notes.

1 2 O 16 P 15 1 2

238

This staff contains measures 238 to 274. It includes several rests of 16 and 15 measures, separated by melodic phrases. The dynamic is *ff*.

Q 10 *ff* 1 2

275

This staff contains measures 275 to 330. It begins with a 10-measure rest, followed by a melodic phrase starting with a *ff* dynamic, and ends with a 2-measure rest.

R 16 S 18 T

293 *ff*

This staff contains measures 331 to 337. It features rests of 16 and 18 measures, followed by a melodic phrase starting with a *ff* dynamic.

331

This staff contains measures 338 to 345, continuing the melodic line.

338

This staff contains measures 346 to 353, continuing the melodic line.

U *ff*

346

This staff contains measures 354 to 361. It begins with a melodic phrase starting with a *ff* dynamic.



V



W

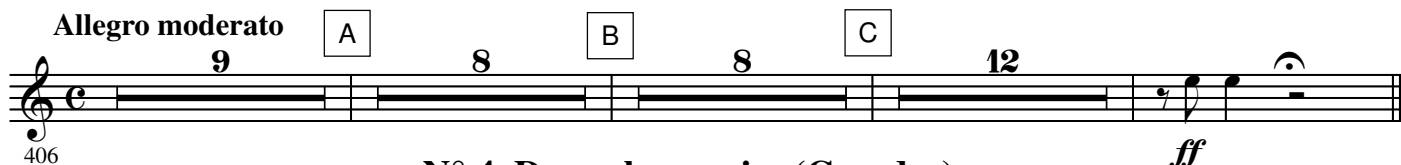


X



### N° 3 Danse des Cygnes

**Allegro moderato**

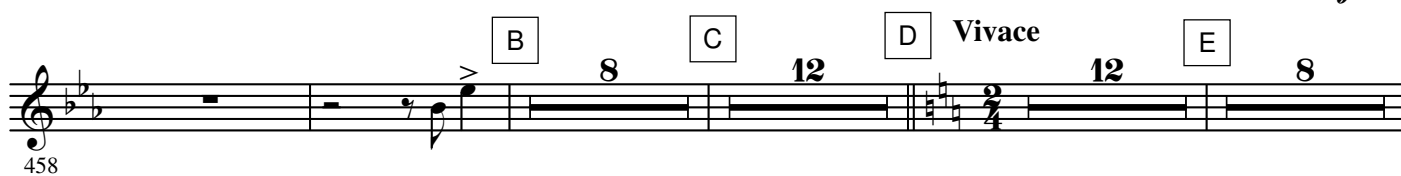


### N° 4 Danse hongroise (Czardas)

**Moderato assai**



**A Allegro moderato**



**D Vivace**

4.

- 1st B $\flat$  Trombone -

F

500 *ff*

516 *ff*

525

534

543

### N° 5 Danse espagnole

Allegro non troppo (Tempo di bolero) A

551 *ff*

574 *mf*

582

L'istesso tempo

D E F

600 *mf*

615 *f*

622

G

632

H Più mosso 8

646

ff

# N° 6 Danse napolitaine

Allegro moderato

Andantino quasi moderato

654

f

A 11 B 7

Molto più mosso

677

C 7 D Presto

ff

690

E 4 3 F

ff

702

G 4 H

mf cresc. ff

709

I 4

722

4

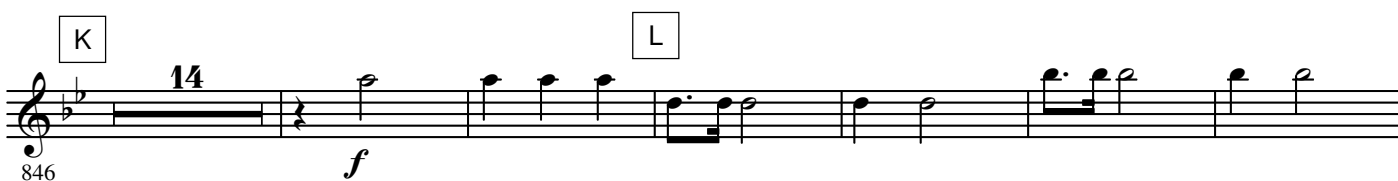
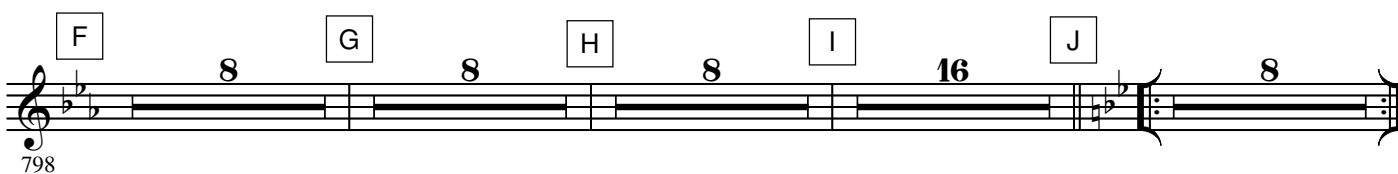
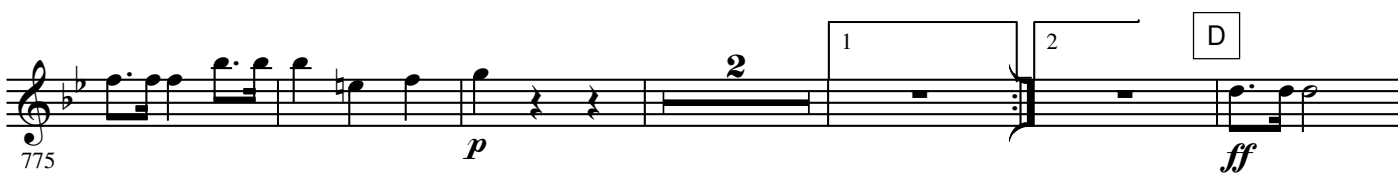
733

6.

- 1st B $\flat$  Trombone -

## N° 7 Mazurka

Tempo di mazurka



873 N *ff*

879 *p* 2 *p*

886 O *ff* *p* P 3 *ff*

895

902 Q

909 R *ff*

916 S Più mosso *ff*

923

930