

2nd B $\flat$  Trombone

## SWAN LAKE SUITE

Peter Illitch TCHAIKOVSKY

Arr. José SCHYNS

## N° 1 Scène

Moderato

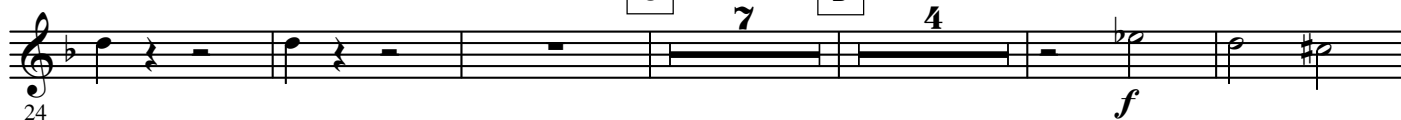
A

B



C

D



Stringendo



E

Più mosso



F



## N° 2 Valse

INTRADA

Tempo di Valse

A

VALSE

B



C

D

F



G



FINE

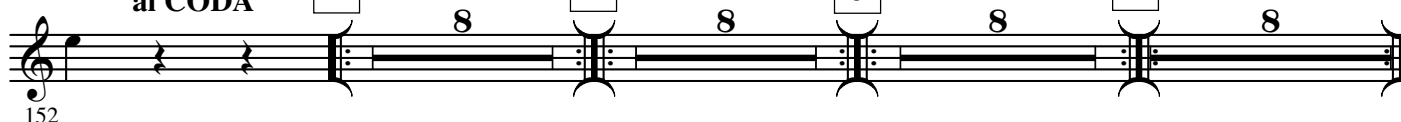
al CODA

H

I

J

K



2.

- 2nd B $\flat$  Trombone -

6 L

185 *ff*

199 **D.S. al FINE**

M **CODA** 15 1 2 N

207 *mf*

228

1 2 O 16 P 15 1 2

238

Q 10 *ff* 1 2

275 *ff*

R 16 S 18 T

293 *ff*

331

338

U

346 *ff*



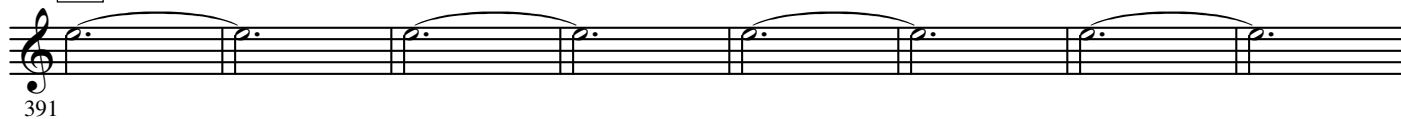
V



W

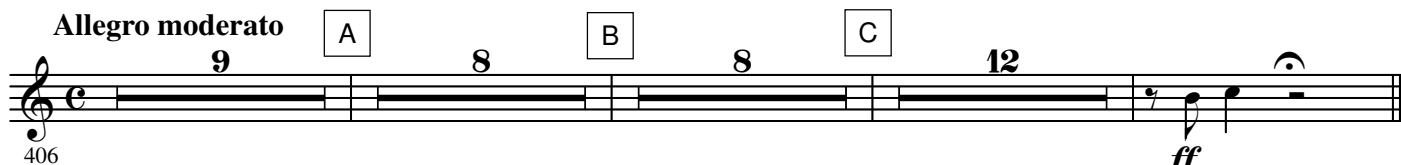


X



### N° 3 Danse des Cygnes

**Allegro moderato**

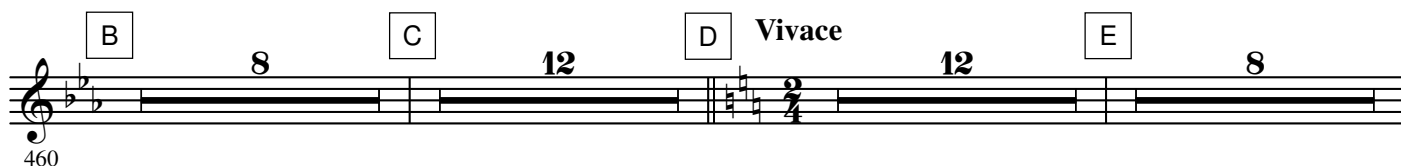


### N° 4 Danse hongroise (Czardas)

**Moderato assai**



**A Allegro moderato**



**D Vivace**

4.

- 2nd B $\flat$  Trombone -

### N° 5 Danse espagnole

Allegro non troppo (Tempo di bolero)

L'istesso tempo

632 **H** Più mosso 8

646 **I** *ff*

### N° 6 Danse napolitaine

**Allegro moderato** **Andantino quasi moderato**

654 *f* **A** 11 **B** 7

677 **C** 7 **D** **Presto** *ff*

690 **E** 4 3 **F** *ff*

702

709 **G** 4 **H** *mf* *cresc.* *ff*

722 **I** 4

733 4

6.

- 2nd B $\flat$  Trombone -

## N° 7 Mazurka

Tempo di mazurka

745 *ff* **A**

752

759 *ff* **B**

766 *p* *ff* **C**

775 *p* *ff* **D**

783

790 **E**

798 **F** 8 **G** 8 **H** 8 **I** 16 **J** 8

846 *f* **K** 14 **L**

866 **M**

873 N *ff*

879 *p* *p* 2

886 O *ff* *p* 3 P *ff*

895

902 Q

909 R *ff*

916 S Più mosso *ff*

923

930