

E♭ Bass

SWAN LAKE SUITE

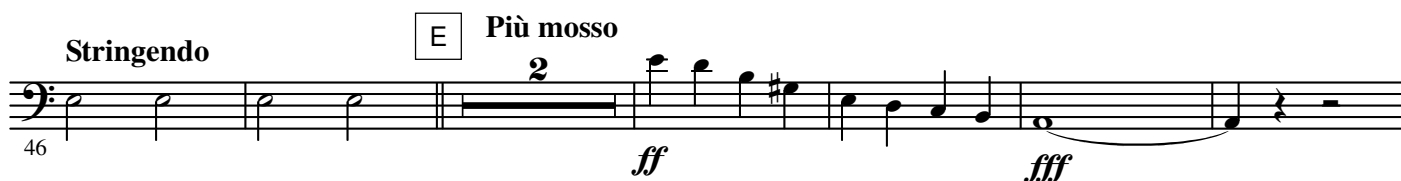
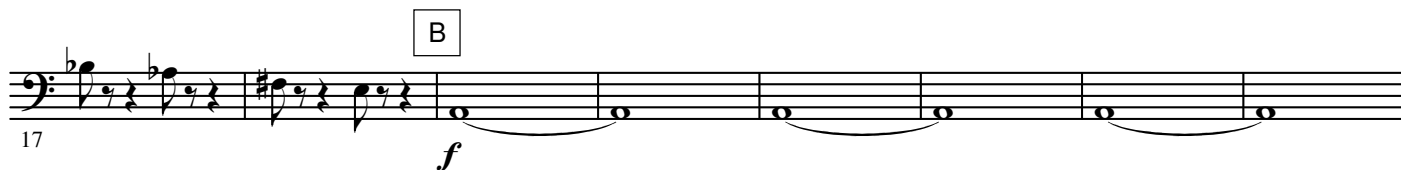
Peter Illitch TCHAIKOVSKY

Arr. José SCHYNS

N° 1 Scène

Moderato

A



2.

- E \flat Bass -

INTRADA

N° 2 Valse

Tempo di Valse



FINE
al CODA

H

8

I

mf

151

J

mf

164

K

8

170

L

4

p

ff

185

196

M

D.S. al FINE

CODA

p

204

4

p

3

1

2

211

N

mf

224

1

232

O

2

p

4

240

4.

- E \flat Bass -

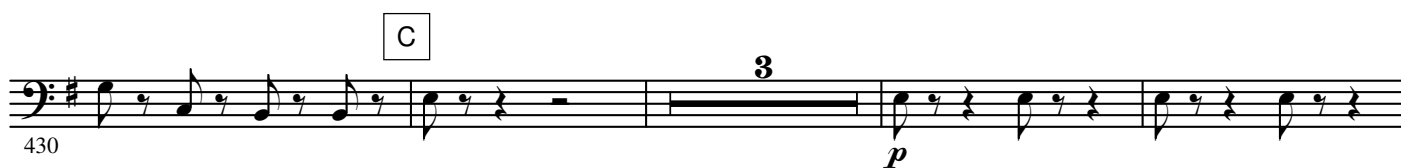


6.

- E \flat Bass -

N° 3 Danse des Cygnes

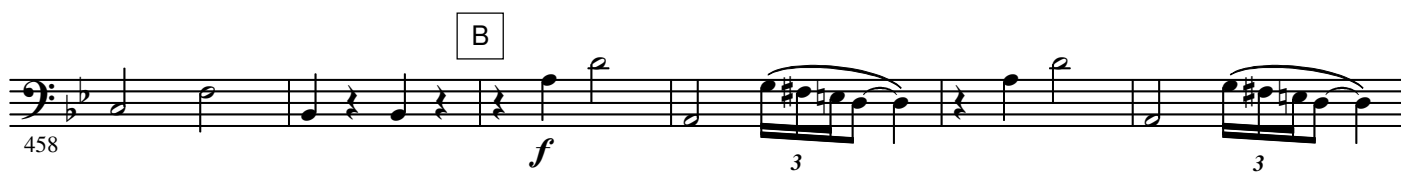
Allegro moderato



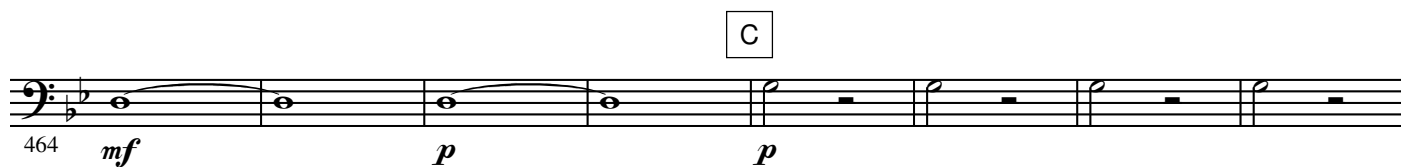
N° 4 Danse hongroise (Czardas)

Moderato assai

A Allegro moderato



464 *mf* *p* *p* **C**



472 *f*



D **Vivace** 3 *p*



490 **E** *cresc.*



498 **F** *ff*



506 **G** 8 **H** *ff*



520 **I** *ff*



527 **J**



534



542



8.

- E \flat Bass -

N° 5 Danse espagnole

Allegro non troppo (Tempo di bolero)



A



B



C



D

L'istesso tempo



E

N° 6 Danse napolitaine

Allegro moderato

A

Andantino quasi moderato



B



C

Molto più mosso



D

Presto



E



F



G



H



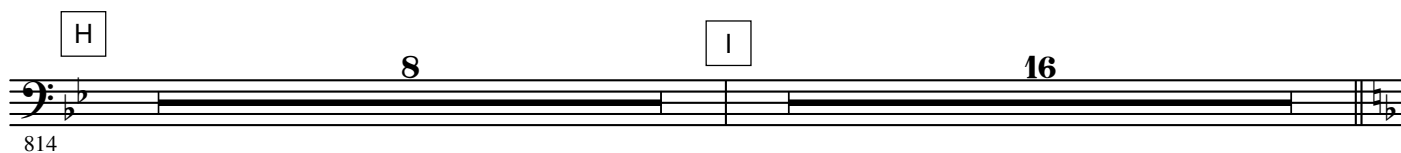
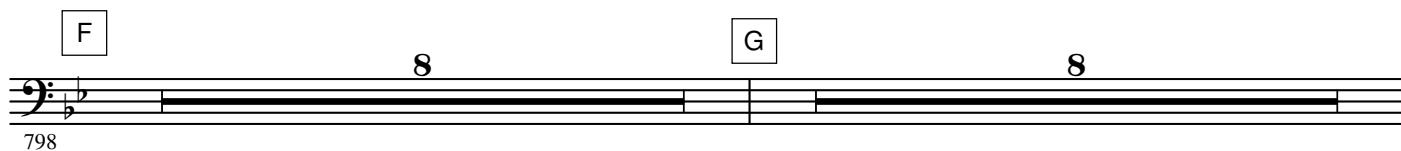
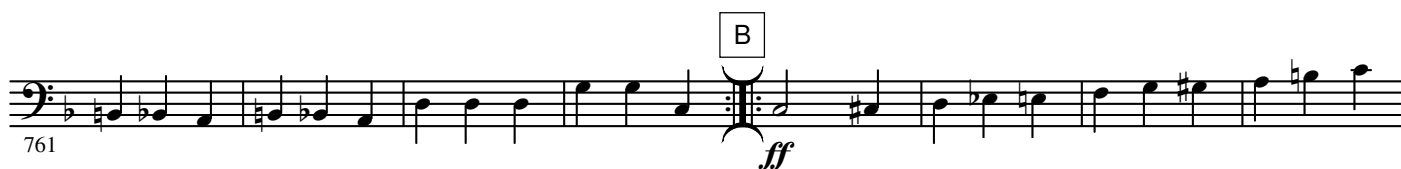
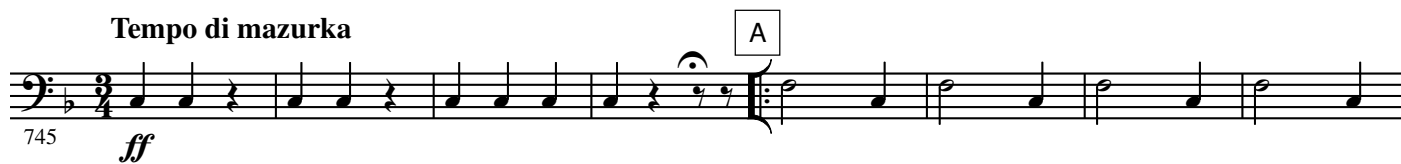
I





N° 7 Mazurka

Tempo di mazurka



12.

- E \flat Bass -

J

838 *f*

K

846

L

854 *p cresc. mf cresc. f*

M

863

N

872 *ff*

O

881 *ff*

P

881 *ff*

Q

895

903

R

911 *ff*

S

Più mosso

919 *ff*

928