

E♭ Bass

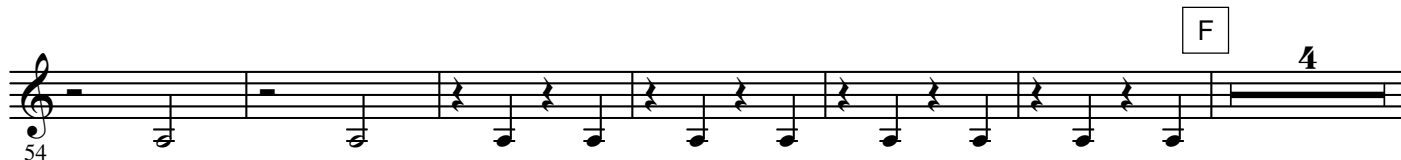
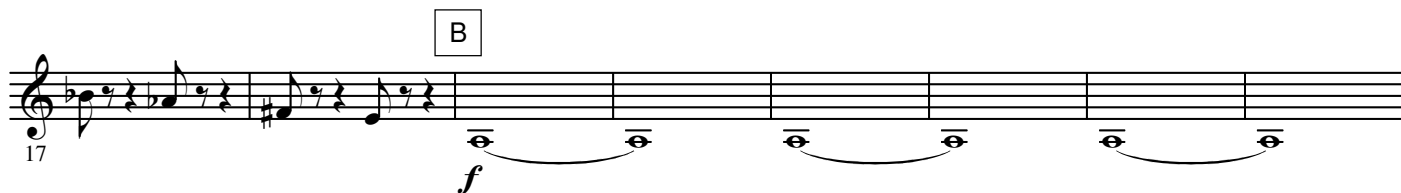
SWAN LAKE SUITE

Peter Illitch TCHAIKOVSKY

Arr. José SCHYNS

N° 1 Scène

Moderato



2.

- E♭ Bass -

INTRADA

N° 2 Valse

Tempo di Valse



FINE
al CODA

H

8

I

mf

J

mf

K

8

L

4

p

ff

M

D.S. al FINE

CODA

p

N

mf

O

2

p

4

1

2

3

1

2

240

232

224

211

204

196

185

170

164

151

Detailed description of the musical score: The score is written for E♭ Bass in treble clef with a key signature of one sharp (F#). It begins at measure 151 with a treble clef and a key signature of one sharp. The first system (measures 151-164) includes a treble clef, a key signature of one sharp, and a time signature of 4/4. It features a treble clef, a key signature of one sharp, and a time signature of 4/4. The second system (measures 164-170) includes a treble clef, a key signature of one sharp, and a time signature of 4/4. It features a treble clef, a key signature of one sharp, and a time signature of 4/4. The third system (measures 170-185) includes a treble clef, a key signature of one sharp, and a time signature of 4/4. It features a treble clef, a key signature of one sharp, and a time signature of 4/4. The fourth system (measures 185-196) includes a treble clef, a key signature of one sharp, and a time signature of 4/4. It features a treble clef, a key signature of one sharp, and a time signature of 4/4. The fifth system (measures 196-204) includes a treble clef, a key signature of one sharp, and a time signature of 4/4. It features a treble clef, a key signature of one sharp, and a time signature of 4/4. The sixth system (measures 204-211) includes a treble clef, a key signature of one sharp, and a time signature of 4/4. It features a treble clef, a key signature of one sharp, and a time signature of 4/4. The seventh system (measures 211-224) includes a treble clef, a key signature of one sharp, and a time signature of 4/4. It features a treble clef, a key signature of one sharp, and a time signature of 4/4. The eighth system (measures 224-232) includes a treble clef, a key signature of one sharp, and a time signature of 4/4. It features a treble clef, a key signature of one sharp, and a time signature of 4/4. The ninth system (measures 232-240) includes a treble clef, a key signature of one sharp, and a time signature of 4/4. It features a treble clef, a key signature of one sharp, and a time signature of 4/4.

4.

- E \flat Bass -

250 *p*

3

P

p

260

268

1 2

Q

f

276

284

3

1 2

ff *f* *mf*

R

293 *p*

301

S

309 *cresc.* *mf* *cresc.*

317

T

325 *ff*

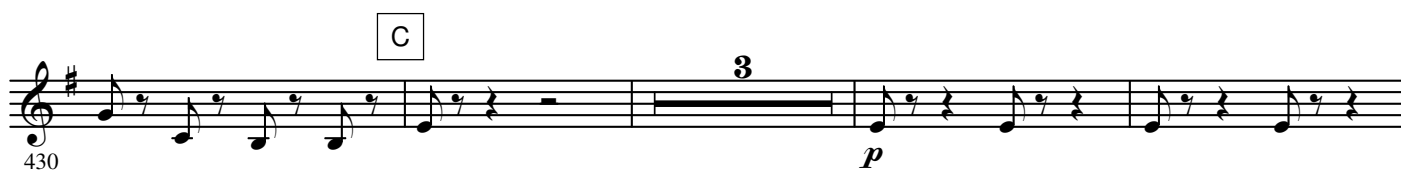


6.

- E \flat Bass -

N° 3 Danse des Cygnes

Allegro moderato



N° 4 Danse hongroise (Czardas)

Moderato assai

A Allegro moderato



464 *mf* *p* *p* **C**

472 *f*

D Vivace 480 *p* 3

E 490 *cresc.*

F 498 *ff*

G **H** 506 *ff* 8

I 520 *ff*

J 527

534

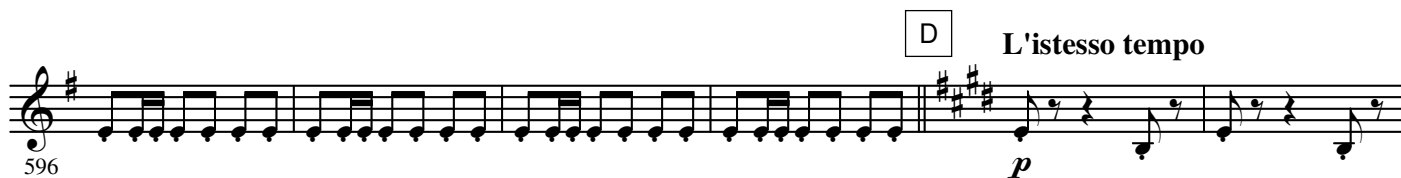
542

8.

- E \flat Bass -

N° 5 Danse espagnole

Allegro non troppo (Tempo di bolero)



E

608 *mf*

F

614 *f*

620

G

626

632 *ff*

H Più mosso

638 *f*

I

644 *ff*

649

N° 6 Danse napolitaine

Allegro moderato A **Andantino quasi moderato**

654 *f* *p*

661

B

669 *mf*

C **Molto più mosso**

677 *p* *mf*

D **Presto**

683 *ff*

E

690 *p* *p* *cresc.*

F

698 *ff*

G

706 *p* *p* *cresc.*

H

714 *ff*

I

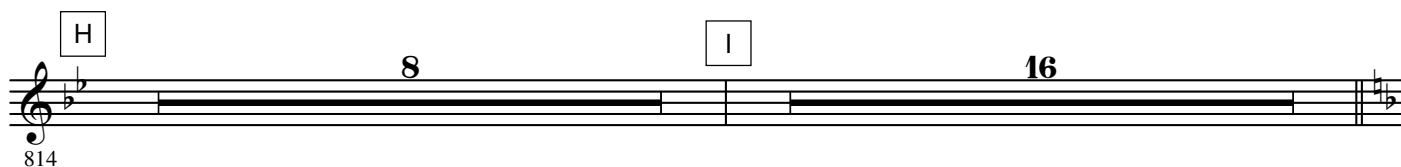
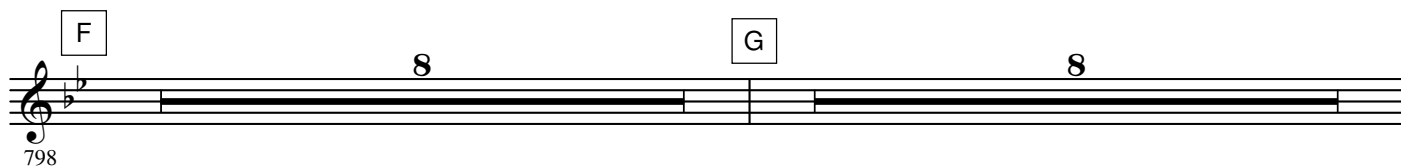
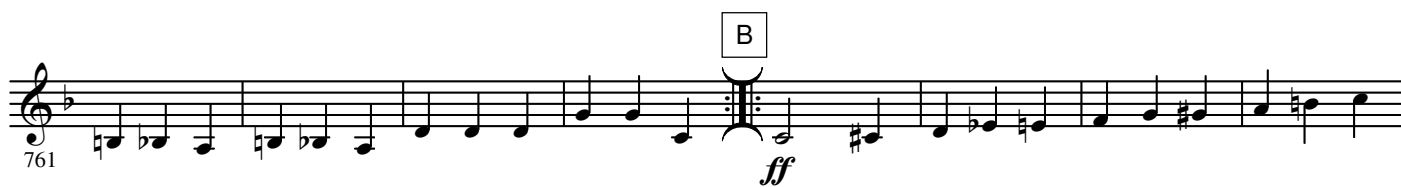
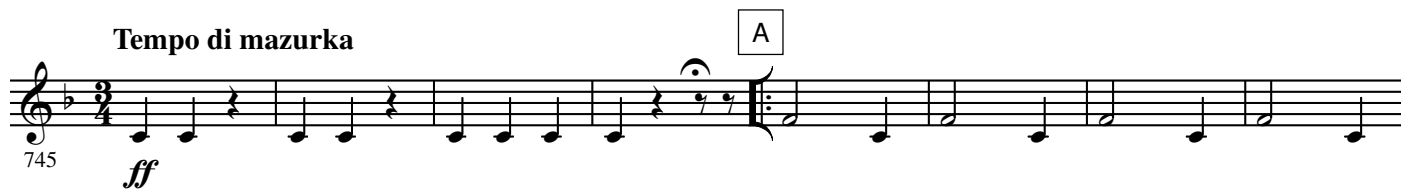
722

730



N° 7 Mazurka

Tempo di mazurka



J

838 *f*

K

846

L

854 *p cresc. mf cresc. f*

M

863

N

872 *ff*

O

881 *ff*

4

P

895 *ff*

4

Q

903

R

911 *ff*

S

919 *ff* Più mosso

928