

B \flat Euphonium $\text{B}\flat$

SWAN LAKE SUITE

Peter Illitch TCHAIKOVSKY

Arr. José SCHYNS

N° 1 Scène

Moderato



A



B



C



D



Stringendo

E Più mosso



F



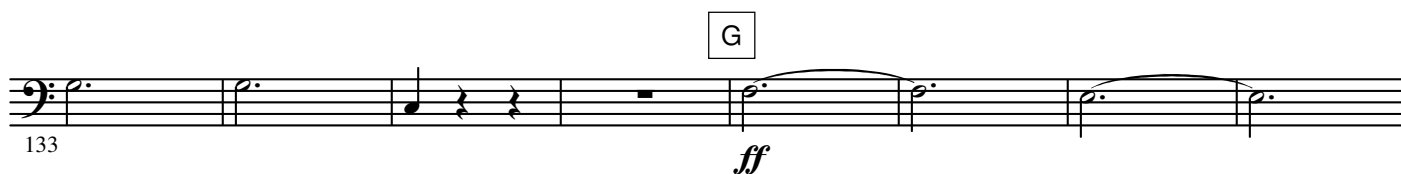
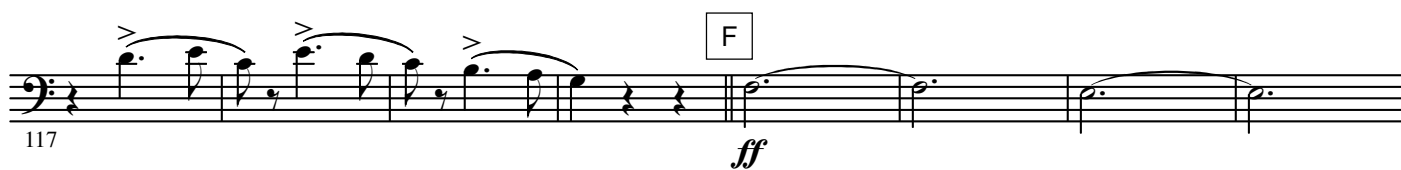
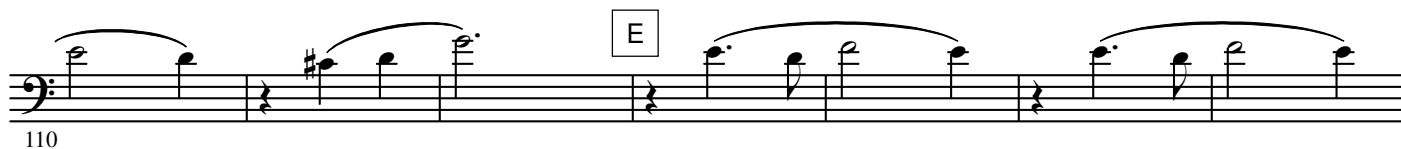
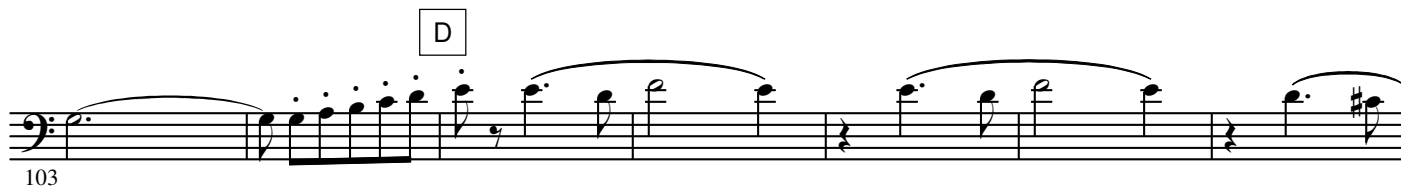
2.

- B \flat Euphonium -

INTRADA

Tempo di Valse

N° 2 Valse



162

The musical score for the bass line of 'The Rose Tree' is shown. It begins with a treble clef and a key signature of one flat (B-flat). The melody starts on a whole note G2, followed by a half note F2, and then a quarter note E2. The tempo is marked 'Andante' and the dynamics are 'p' (piano). The score includes a repeat sign with first and second endings. The first ending leads back to the beginning of the piece, and the second ending leads to the final cadence. The piece ends with a double bar line and a repeat sign.

191 *ff*

D.S. al FINE

Musical notation on a single staff with a bass clef. The key signature has one flat (B-flat). The melody consists of several measures: a half note B-flat, followed by two eighth notes G and A tied across a bar line, then a quarter note B-flat, a dotted quarter note C, an eighth rest, a quarter note D, another eighth rest, a quarter note E, a dotted quarter note F, an eighth rest, a quarter note G, and finally a whole note B-flat. The piece concludes with a double bar line and a final chord consisting of a B-flat major triad (B-flat, D, F) in the next measure.

199

The musical score for the ending of 'The Rose Tree' is written on a single staff in bass clef with a key signature of two flats (B-flat and E-flat). The tempo is marked 'Allegretto' and the time signature is 3/4. The score begins with a double bar line and a repeat sign. The first measure is marked with a box containing 'M' and the number '15'. This is followed by a measure with a box containing '1'. The next measure is marked with a box containing '2'. This is followed by a measure with a box containing 'N'. The next measure is marked with the number '14'. This is followed by a measure with a box containing '1' and the number '2'. The final measure is marked with a box containing '2' and the number '2'. The score ends with a double bar line and a repeat sign. The page number '207' is written at the bottom left.

Musical notation for the bass line of 'The Rose Tree'. The notation is on a single staff with a bass clef and a key signature of one flat (B-flat). The melody consists of a series of eighth notes. Above the staff, there are labels for the notes: 'O' above the first note, 'P' above the second note, '1' above the third note, '2' above the fourth note, and 'Q' above the fifth note. The numbers 16, 15, 1, 2, and 10 are placed above the staff, corresponding to the notes. The number 242 is written below the staff at the beginning.

285 *ff* *f*

292 *mf*

R 16 S 18

4.

- B \flat Euphonium -

T div.

327 *ff*

334

U

341 *ff*

349

V

359

368

W

377

X

387

397

N° 3 Danse des Cygnes

Allegro moderato

A **B** **C**

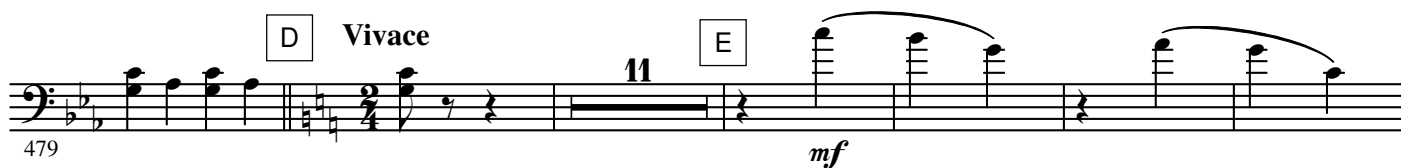
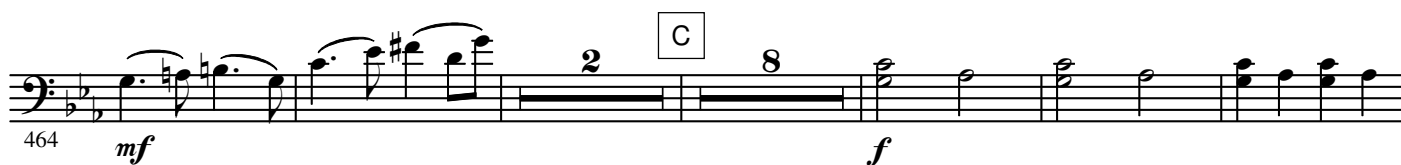
9 8 8 12

406 *ff*

N° 4 Danse hongroise (Czardas)

Moderato assai

A Allegro moderato
div.



6.

- B \flat Euphonium -

N° 5 Danse espagnole

Allegro non troppo (Tempo di bolero)

551 *ff* *p*

558 *mf* *p* A

564 *mf* B

571 *mf* C

581 *mf*

590

598 D L'istesso tempo *p*

607 E *mf*

618 F div. *f*

626 G

634 H Più mosso *ff* *f*

644 I *ff*

N° 6 Danse napolitaine

Allegro moderato A **Andantino quasi moderato**

654 *f* *p*

B

663

C **Molto più mosso**

673 *mf* *p*

D **Presto**

680 *mf* *ff*

E

688 *p*

F

697 *p* *cresc.* *ff*

G

706 *p* *cresc.*

H

715 *ff*

I

724

731

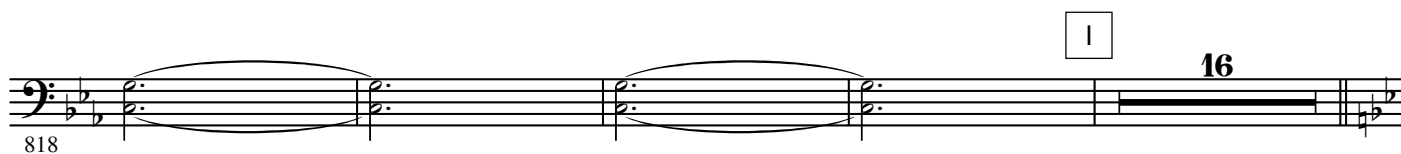
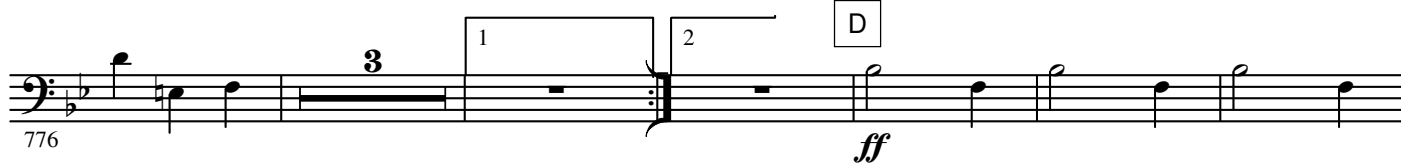
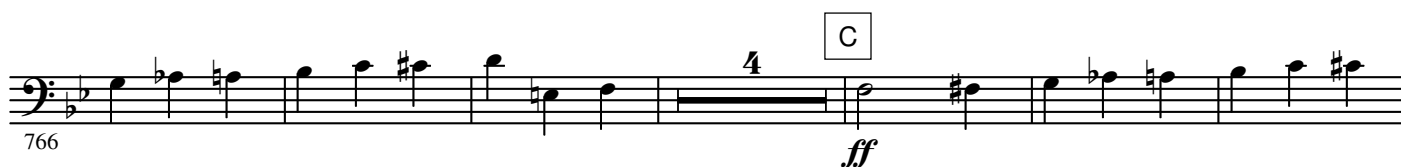
738

8.

- B \flat Euphonium -

N° 7 Mazurka

Tempo di mazurka



844 K 8 *p* *cresc.*

858 *mf* *cresc.* *f* L

866 M

874 N *ff*

882 O 4 *ff* P 4 *ff*

896 Q

904

912 R *ff*

S Più mosso *ff*

929