

# SWAN LAKE SUITE

1st E $\flat$  Horn

Peter Illitch TCHAIKOVSKY

Arr. José SCHYNS

## N° 1 Scène

**Moderato**

1

9

A

9

B

*f*

22

C

27

D

33

39

**Stringendo**

E

**Più mosso**

4

*fff*

45

54

F

10

60

2.

- 1st E♭ Horn -


## INTRADA

## N° 2 Valse

Tempo di Valse

71 **A** 6 *f* *p*

## VALSE

85 **B**  *p*

94 **C**

103 **D**

112 **E**

121 **F** *ff*

130 **G** *ff*

139

FINE  
al CODA

148 **H** *p*

157 **I** **J** **K** 8 8 8

185 **L** 6 *ff*

199 **D.S. al FINE**

207 **M CODA** *p*

215 *p*

224 **N** *mf*

233

242 **O** *p*

250 *p*

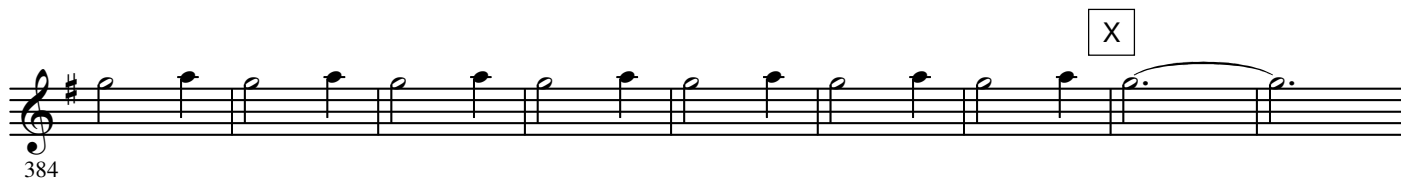
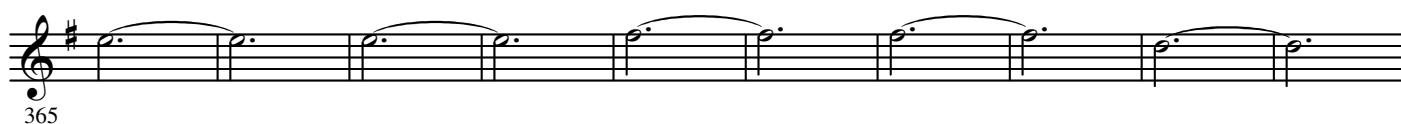
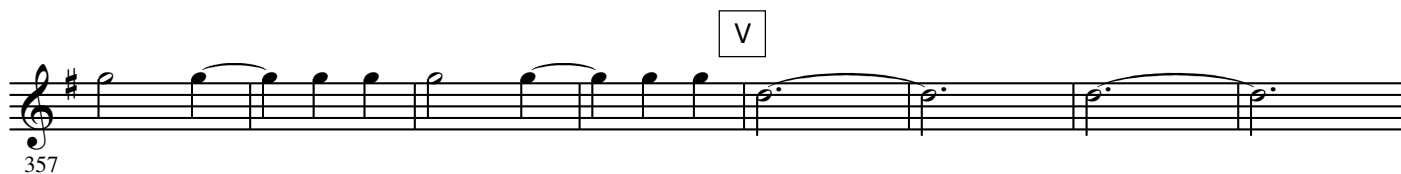
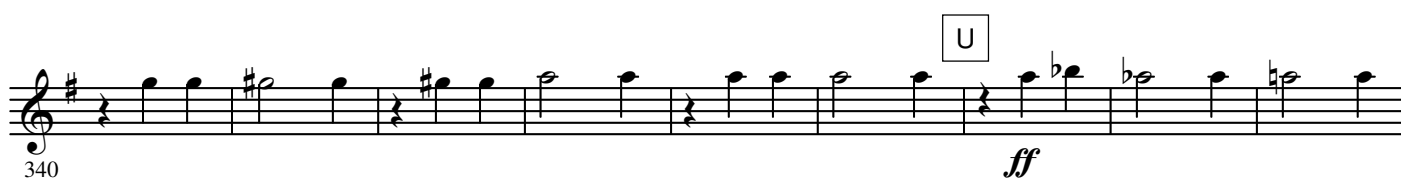
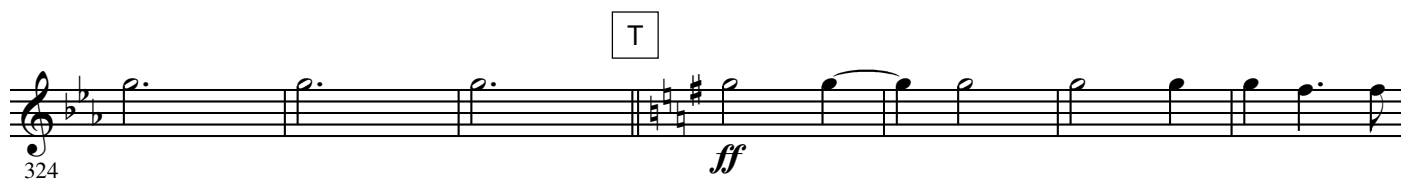
258 **P** 15 **Q** *f*

279 *ff*

287 **R** 16 **S** 6

4.

- 1st E♭ Horn -



- 1st E♭ Horn -

## N° 3 Danse des Cygnes

**Allegro moderato**

9 8 8 12

A B C

406 *ff*

## N° 4 Danse hongroise (Czardas)

**Moderato assai**

**Allegro moderato**

A

444 *f* *p*

451 *f*

B C

8 8

459 *f*

D Vivace

E

11

480 *mf* *cresc.*

F G

8

500 *ff*

H I

516 *ff* *ff*

J

525

534

543

6.

- 1st E $\flat$  Horn -

## N° 5 Danse espagnole

Allegro non troppo (Tempo di bolero)

551 *ff* *p* *mf*

9 5

A

569

B

575

581

C

587

593

D L'istesso tempo

600 *p*

E

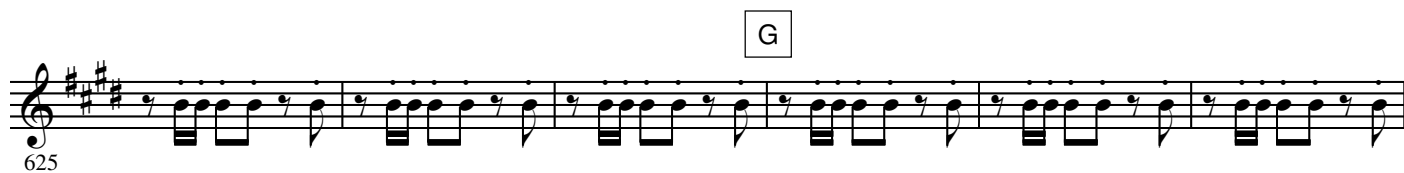
606 *mf*

F

612 *f*

619

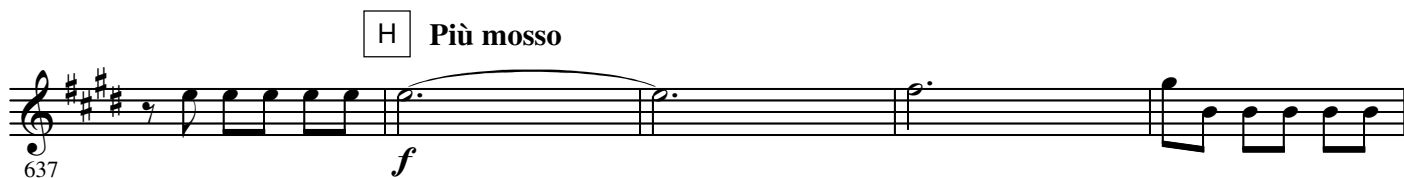
625 G



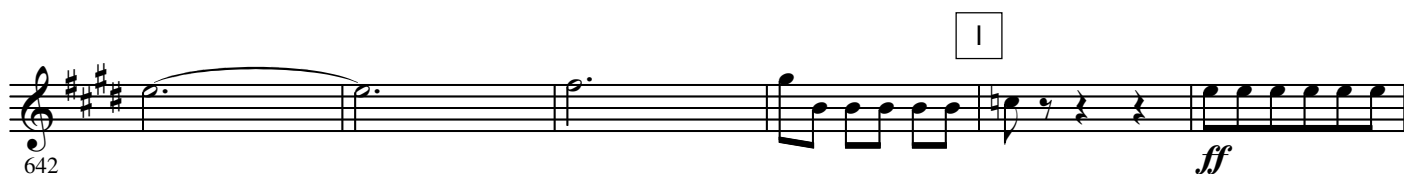
631 *ff*



637 H Più mosso *f*



642 I *ff*



648



### N° 6 Danse napolitaine

654 *f* A Andantino quasi moderato 11



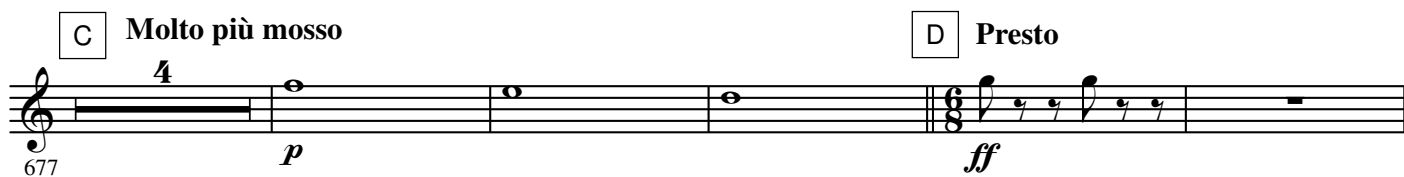
669 B *p*



673



677 C Molto più mosso 4 *p* D Presto 6 *ff*

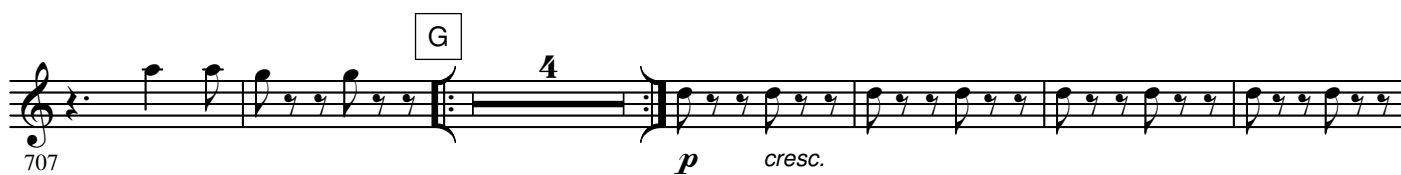
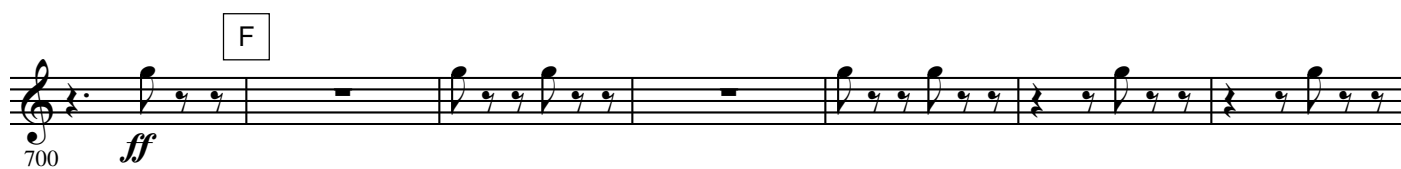


686 E 4 3



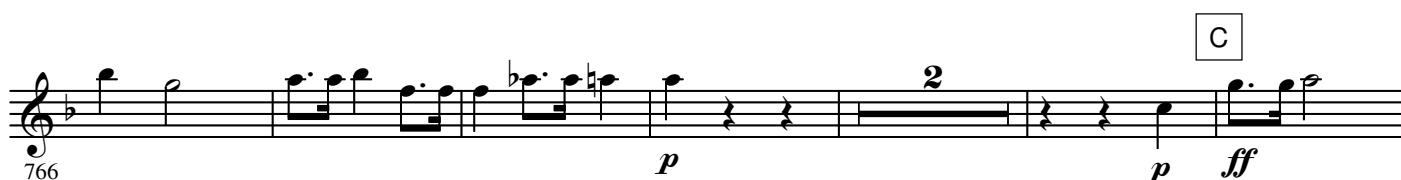
8.

- 1st E♭ Horn -



## N° 7 Mazurka

Tempo di mazurka





774 *p*

D

782 *ff*

E

789

F

796

G

H

I

J

K

814

*f*

L

851

*mf cresc. f*

863

M

870

N

877

*ff p*

O

885

*p ff p*

10.

- 1st E $\flat$  Horn -

P

894 *ff*

Q

901

R

908 *ff*

S Più mosso

915 *ff*

922

929