

2nd E $\flat$  Horn

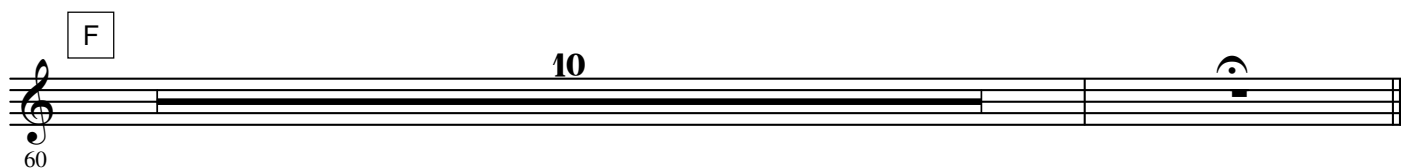
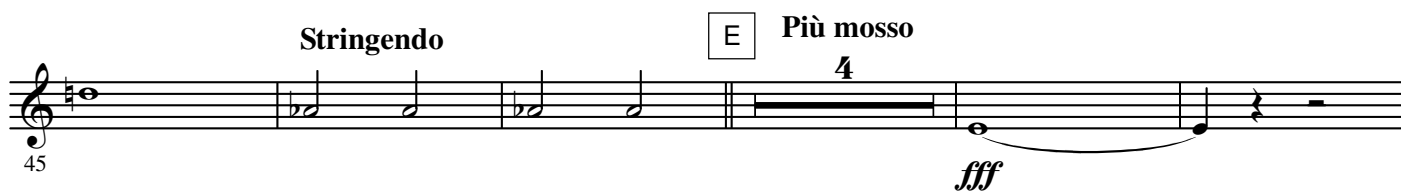
## SWAN LAKE SUITE

Peter Illitch TCHAIKOVSKY

Arr. José SCHYNS

## N° 1 Scène

Moderato



2.

- 2nd E♭ Horn -

## INTRADA

## N° 2 Valse

Tempo di Valse

71 **A** **6** *f* *p*

85 **VALSE** **B**

94 **C**

103 **D**

112 **E**

121 **F** *ff*

130 **G** *ff*

139

FINE  
to CODA

148 **H** *p*

157 **I** **J** **K** **8** **8** **8**

185 **L** 6 *ff*

199 **D.S. al FINE**

207 **M CODA** *p*

215 *p*

224 **N** *mf*

233

242 **O** *p*

250 *p*

258 **P** 15 **Q** *f*

279 *ff*

287 **R** 16 **S** 6

4.

- 2nd Eb Horn -

315 *mf cresc.*

324

331

340

349

357

365

375

384

393

### N° 3 Danse des Cygnes

**Allegro moderato**

9 8 8 12

A B C

406

*ff*

### N° 4 Danse hongroise (Czardas)

**Moderato assai**

**Allegro moderato**

A

444

*f* *p*

451

*f*

B C

8 8

459

*f*

D Vivace

E

11 4

480

*mf* *cresc.*

F G

500

*ff*

8

H I

516

*ff* *ff*

J

525

534

543

6.

- 2nd E $\flat$  Horn -

## N° 5 Danse espagnole

Allegro non troppo (Tempo di bolero)

551 *ff* 15 *mf* A

570

575 B

581

587 C

593

600 D L'istesso tempo *p*

606 E *mf*

612 F *f*

619

625

G

630

ff

635

H Più mosso

2

f

641

2

f

ff

648

### N° 6 Danse napolitaine

Allegro moderato

654

f

A Andantino quasi moderato

11

669

B

p

673

C Molto più mosso

4

p

D Presto

6

ff

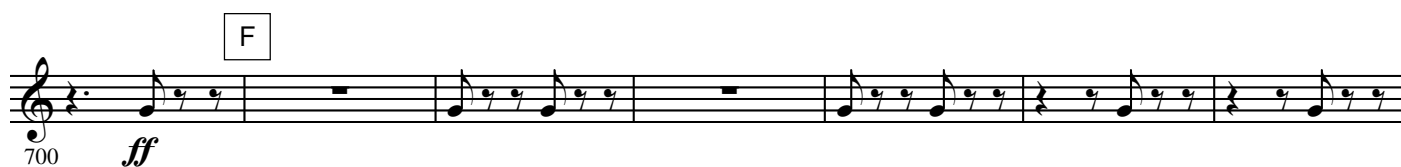
686

E

4

3

8.

- 2nd E $\flat$  Horn -

## N° 7 Mazurka

Tempo di mazurka





774 *p*

2 1 2

782 *ff*

D

789

E

796

F G

8 8

814

H I J K

8 16 8 12

858 *mf* *cresc.* *f*

L

864

870

M

877 *ff* *p*

N

2

885 *p* *ff* *p*

O

3

10.

- 2nd E♭ Horn -

