

3rd E♭ Horn

SWAN LAKE SUITE

Peter Illitch TCHAIKOVSKY

Arr. José SCHYNS

N° 1 Scène

Moderato

A

B

C

D

E **Stringendo** **Più mosso**

F

1

9

9

f

23

2

30

2

37

3

3

43

4

52 **fff**

58

10

2.

- 3rd E \flat Horn -

N° 2 Valse

INTRADA

Tempo di Valse

71 6 A

f *p*

84 B %

p

93 C

102 D

111 E

120 F

ff

129 G

ff

139

148 FINE al CODA H I J

8 8 8

177 K 8 L 6 *ff*

197

205 *D.S. al FINE* M CODA *p* 4

215 *p* 3 1 2 *mp*

224 N *mf*

233 1 2

242 O *p* 4 *p*

254 P 4 15 1 2 Q *f*

278 *ff*

286 1 2 R 16

4.

- 3rd E \flat Horn -

309 S **6** *mf* *cresc.*

The musical score for Example 6-10 consists of two staves. The first staff contains measures 323 through 327, which are part of a descending chromatic scale. Measure 323 starts with a treble clef and a key signature of one flat. Measures 324 through 327 continue the scale. The second staff begins at measure 328 with a double bar line from the first staff. It features a box labeled 'T' above the first measure, followed by notes marked with a fortissimo (*ff*) dynamic. A slur covers measures 329 and 330.

[illegible]

338

346 *ff*

354

V

[illegible]

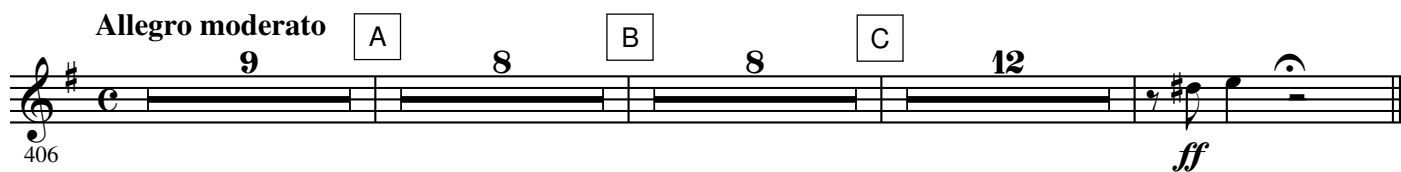
382

The musical notation for measures 382-385 is as follows:

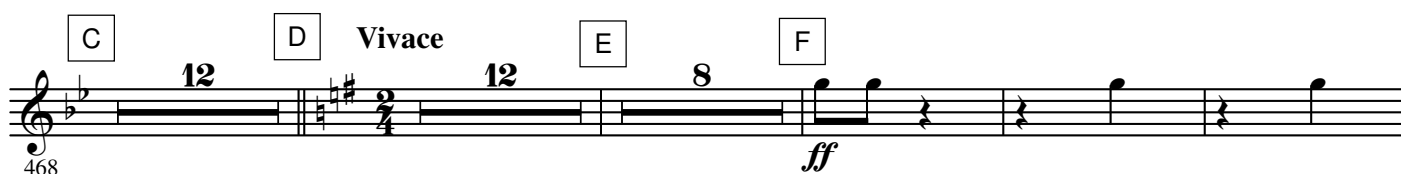
- Measure 382: Treble clef, key signature of one sharp (F#), common time signature. The first beat contains a quarter note G4 with a fermata. The second beat contains a quarter note A4.
- Measure 383: Treble clef, key signature of one sharp (F#), common time signature. The first beat contains a quarter note B4. The second beat contains a quarter note C5.
- Measure 384: Treble clef, key signature of one sharp (F#), common time signature. The first beat contains a quarter note D5. The second beat contains a quarter note E5.
- Measure 385: Treble clef, key signature of one sharp (F#), common time signature. The first beat contains a quarter note F#5. The second beat contains a quarter note G5.



N° 3 Danse des Cygnes



N° 4 Danse hongroise (Czardas)



6.

- 3rd E \flat Horn -

N° 5 Danse espagnole

Allegro non troppo (Tempo di bolero)

A



B



C



D

L'istesso tempo

E



F



G



H

Più mosso



I



N° 6 Danse napolitaine

Allegro moderato

A

Andantino quasi moderato



B



C

Molto più mosso

D

Presto



E



F



G

H



I



N $^{\circ}$ 7 Mazurka

Tempo di mazurka

745 *ff* A

752

759 *ff* B

766 *p* C *p* *ff*

774 *p* D

782 *ff* E

789

796 F G

814 H I J K

860 *f* L

M

867

N

874

ff

O

881

p *ff*

P

889

p *ff*

Q

898

905

R

912

ff

S Più mosso

919

ff

925

931