

SWAN LAKE SUITE

1st B♭ Trombone

Peter Illitch TCHAIKOVSKY

Arr. José SCHYNS

N° 1 Scène

Moderato

A **B**

9 9 *f*

C **D**

7 4 *f*

E **F**

Più mosso

2 *ff* *fff*

3 3 **Stringendo**

10

1 24 40 47 55

N° 2 Valse

INTRADA

Tempo di Valse

A **B** **C** **D** **F** **G**

6 6 4 8 8 16 7 8 8 8 8

f *ff* *ff* *ff*

VALSE

FINE

al CODA

132 139 152

2.

- 1st B \flat Trombone -

6 L

185 *ff*

199 **D.S. al FINE**

M **CODA** N

15 1 2

207 *mf*

228

1 2 O P

16 15 1 2

238

Q 10 1 2

275 *ff*

R 16 S 18 T

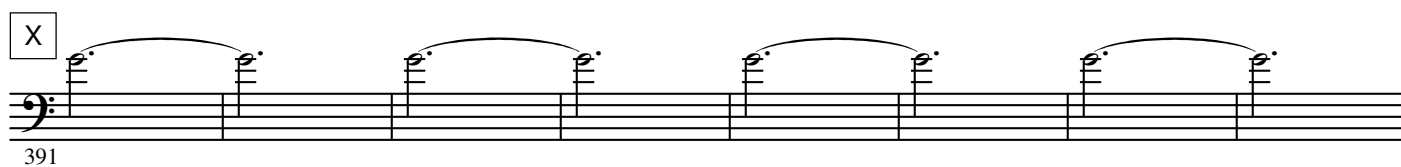
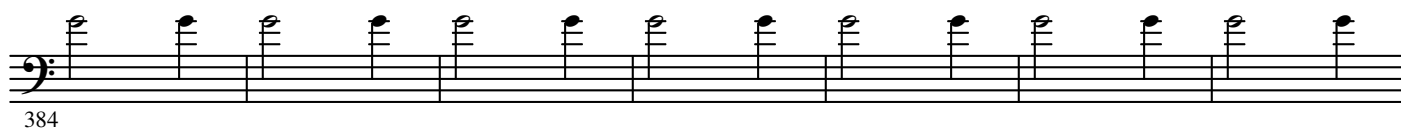
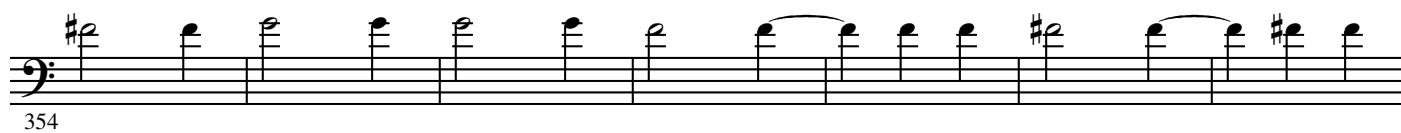
293 *ff*

331

338

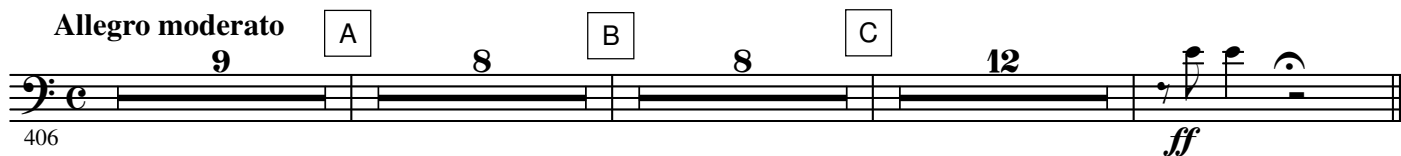
U

346 *ff*



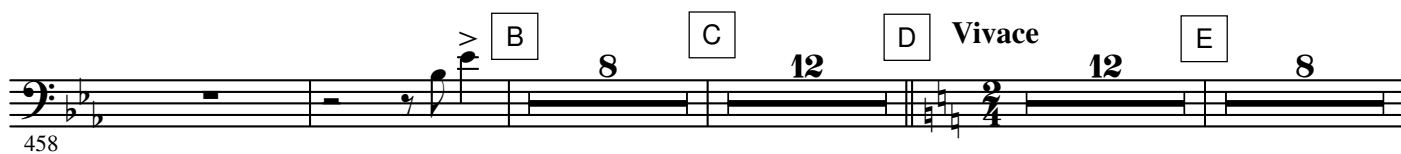
N° 3 Danse des Cygnes

Allegro moderato



N° 4 Danse hongroise (Czardas)

Moderato assai



4.

- 1st B \flat Trombone -

500 *ff*

F

G 8

516 *ff*

H

I

ff

525

J

534

543

N° 5 Danse espagnole

Allegro non troppo (Tempo di bolero)

551 *ff*

16

A

mf

574

B

mf

582

C

12

L'istesso tempo

600

D

10

E

mf

615

F

f

622

G

632

ff

H Più mosso 8

646

ff

I

N° 6 Danse napolitaine

Allegro moderato

Andantino quasi moderato

654

f

A 11 B 7

Molto più mosso Presto

677

ff

C 7 D

690

E 4 3 F

ff

702

G 4 4 H

709

mf cresc. *ff*

I 4

722

733

4

6.

- 1st B \flat Trombone -

N° 7 Mazurka

Tempo di mazurka

745 *ff*

752

759 *ff*

766 *p* *p* *ff*

775 *p* *ff*

783

790

798 8 8 8 16 8

846 *f*

866

A

B

C

D

E

F

G

H

I

J

K

L

M

873 N
ff

879 *p* 2 *p*

886 O P
ff *p* *ff*

895

902 Q

909 R
ff

916 S Più mosso
ff

923

930