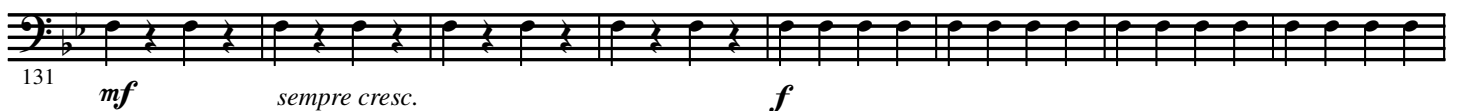
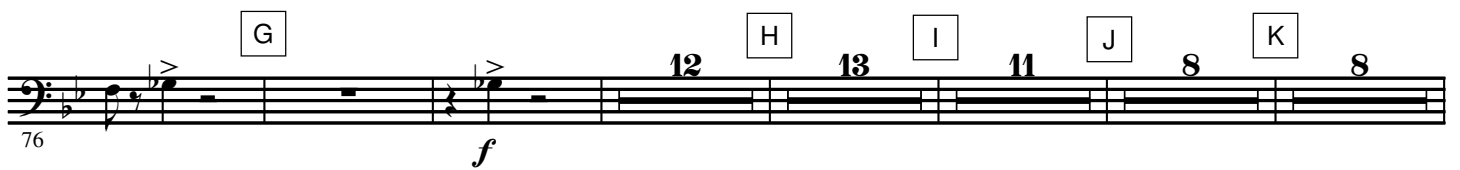
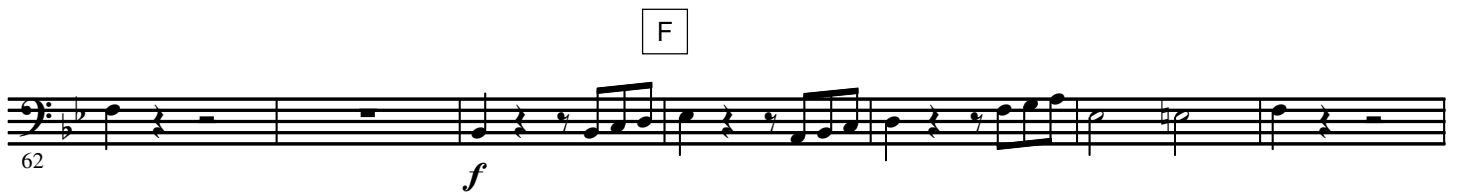


Andante maestoso



146

The musical score for the bass line of 'The Rose Tree' is written on a single staff. It begins with a treble clef and a key signature of one flat (B-flat). The melody consists of eighth and quarter notes, with some rests. The piece ends with a double bar line. Above the staff, there are three boxes labeled 'M', 'N', and '10'. The number '146' is written below the staff at the beginning.

207

R

8

mf sempre cresc.

The image shows a musical score for the bass line of 'The Rose Tree'. The score is written on a single staff with a key signature of one sharp (F#) and a common time signature (C). The music begins at measure 207. The first two measures contain a whole note G2 and a whole note A2, respectively. The third measure is a whole rest, indicated by a box containing the letter 'R'. The fourth measure contains a whole note G2, followed by a measure with a whole note A2. The sixth measure contains a whole note G2, followed by a measure with a whole note A2. The eighth measure contains a whole note G2, followed by a measure with a whole note A2. The tenth measure contains a whole note G2, followed by a measure with a whole note A2. The twelfth measure contains a whole note G2, followed by a measure with a whole note A2. The thirteenth measure contains a whole note G2, followed by a measure with a whole note A2. The fourteenth measure contains a whole note G2, followed by a measure with a whole note A2. The fifteenth measure contains a whole note G2, followed by a measure with a whole note A2. The sixteenth measure contains a whole note G2, followed by a measure with a whole note A2. The seventeenth measure contains a whole note G2, followed by a measure with a whole note A2. The eighteenth measure contains a whole note G2, followed by a measure with a whole note A2. The nineteenth measure contains a whole note G2, followed by a measure with a whole note A2. The twentieth measure contains a whole note G2, followed by a measure with a whole note A2. The score is marked with a dynamic of *mf* (mezzo-forte) and a crescendo marking 'sempre cresc.' (always crescendo). The number '8' is written above the staff, indicating the number of measures in the phrase. The number '207' is written below the staff, indicating the starting measure number.

S **Piu mosso**

221 *f* *ff*

228

235

Example 10

242

250

U

The musical score for 'U' is written in bass clef with a key signature of one sharp (F#). The melody consists of eighth and quarter notes, with rests. The lyrics 'U' are placed above the staff.

[illegible]