

B $\flat$  Bass

## LA GAZZA LADRA

Giacchino ROSSINI

Arr. José SCHYNS

Maestoso marziale

1 *f*

7

A

14 *f*

20 *f*

B

27

32

37 *f*

C

44

50 *pp* *cresc.*

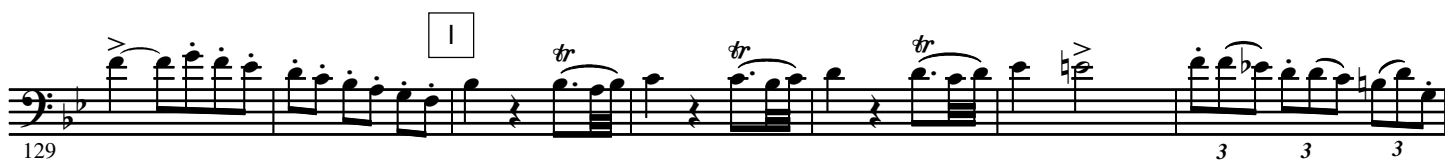
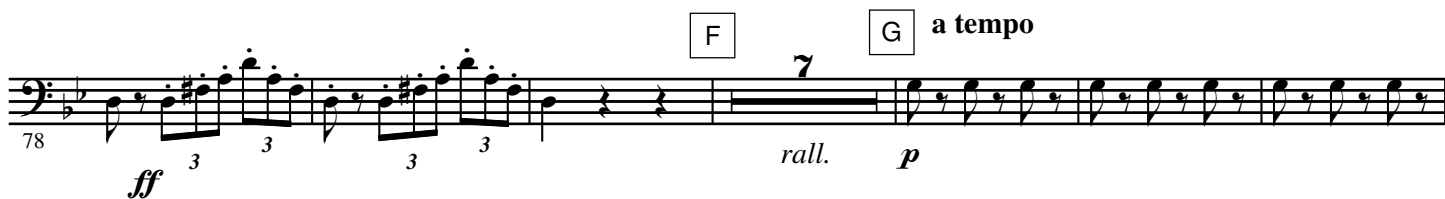
D

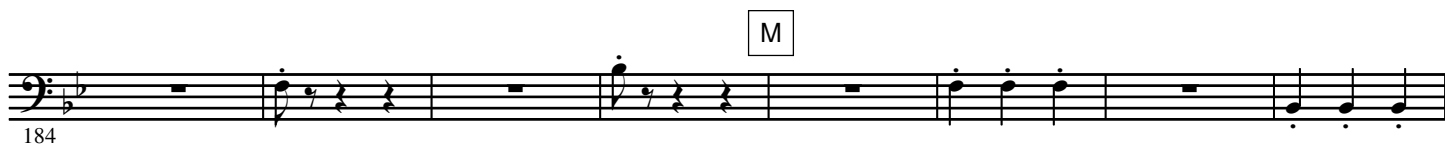
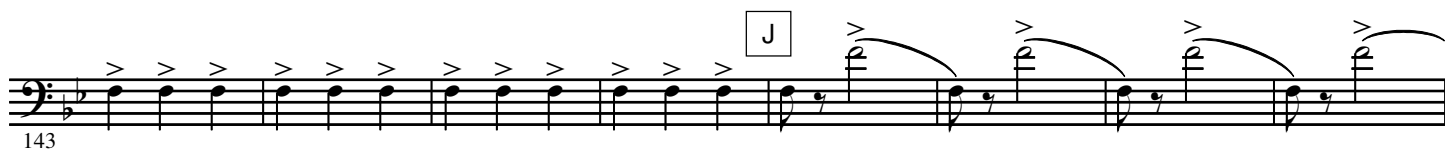
56 *ff*

2.

- B♭ Bass -

E

 Allegro con brio




4.

- B $\flat$  Bass -

213

O

*p*

220

228

P

236

*cresc.*

244

252

260

Q

*ff*

268

3

276

3

283

3

290

R

4 3

a tempo

rall. p

302

310

ff 3 3 3 3

317

S T

10

p

334

342

350

U

p

358

366

6.

- B $\flat$  Bass -

V



W



X



Y

Piu mosso



