

E♭ Bass

LA GAZZA LADRA

Giacchino ROSSINI

Arr. José SCHYNS

Maestoso marziale

1

f

tr

7

tr

tr

2

A

14

f

tr

20

2

B

f

tr

27

tr

32

tr

C

37

f

tr

44

D

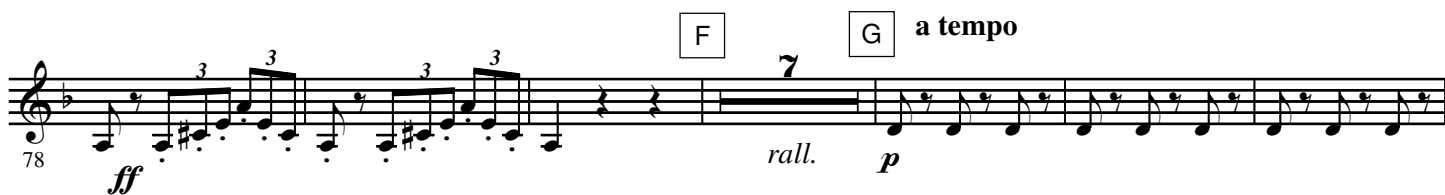
50

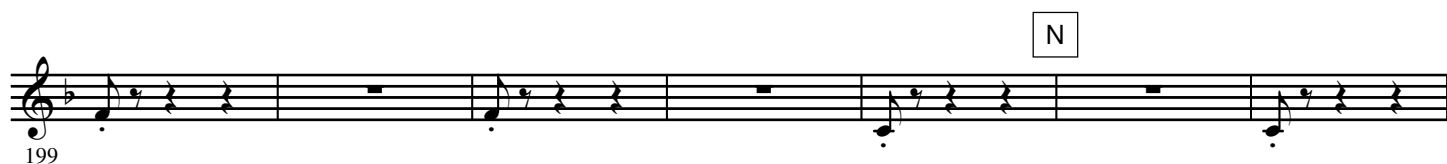
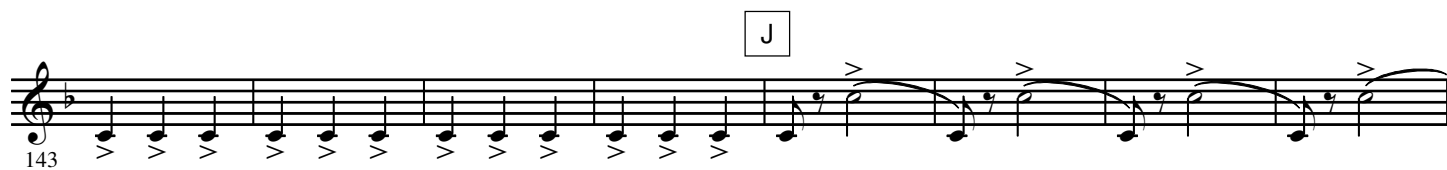
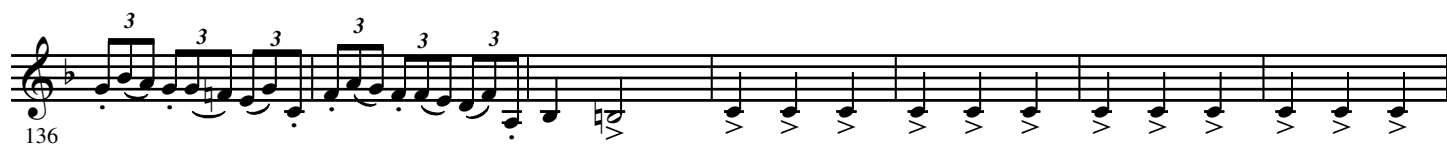
pp *cresc.*

56

ff

2.

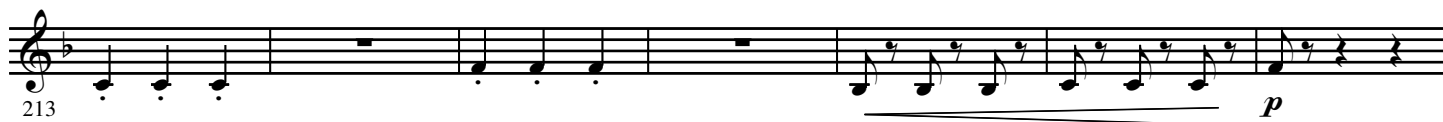
- E \flat Bass -**E** Allegro con brio



4.

- E \flat Bass -

O



P



Q



290

R

4 3 a tempo

rall. p

302

310

3 3 3 3

ff

317

S

10

T

p

334

342

350

U

p

358

366

6.

- E \flat Bass -

V



W



X



Y

Piu mosso



