

B \flat Euphonium b

LA GAZZA LADRA

Gioacchino ROSSINI

Arr. José SCHYNS

Maestoso marziale

1 *f*

7 *f*

14 *f*

20 *f*

27

33

39 *f*

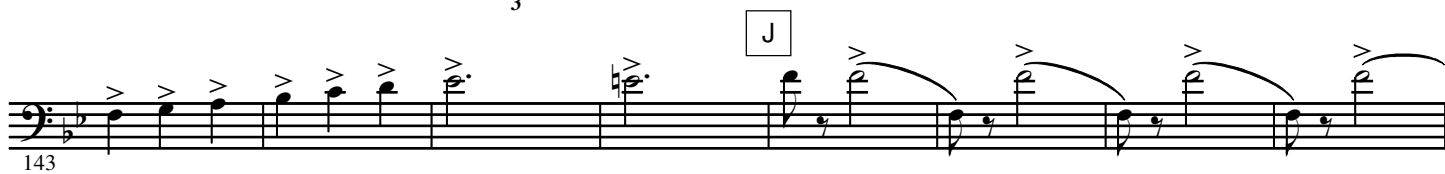
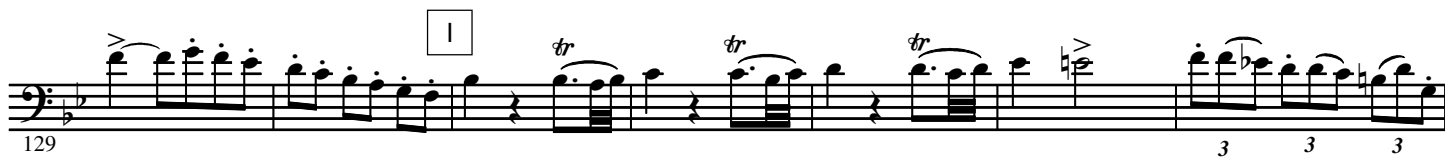
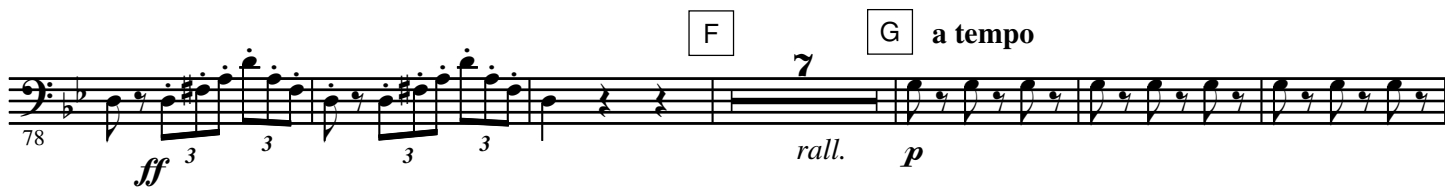
45

50 *pp* *cresc.*

56 *ff*

E

Allegro con brio



Musical score for the bass line of "The Swan" by Camille Saint-Saëns, measures 151-287. The score is written in bass clef with a key signature of one flat (B-flat).

The score is divided into systems, with measure numbers 151, 188, 225, 233, 241, 249, 257, 265, 273, 280, and 287 marked at the beginning of their respective lines.

Dynamics and articulation include:

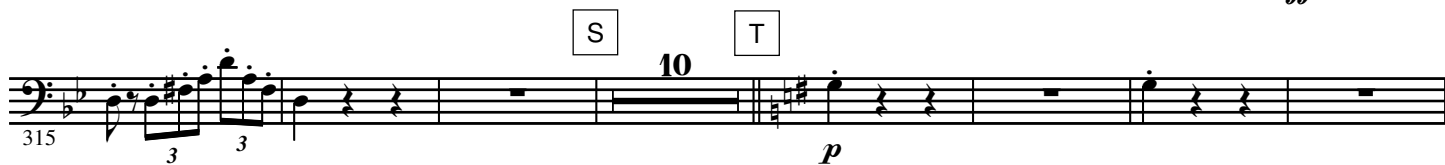
- ff* (fortissimo) at measure 151.
- p* (piano) at measure 188.
- cresc.* (crescendo) starting at measure 233.
- ff* (fortissimo) at measure 265.
- Accents (>) are used on various notes throughout the piece.
- Trills are present in measures 273, 280, and 287.

Fingerings are indicated by numbers 1-5 above the notes. Some measures include specific fingering instructions like "3" or "4".

The score includes several boxed letters: K, L, M, N, O, P, Q, and R, likely indicating key positions or specific technical exercises.

The piece concludes with a *rall.* (rallentando) marking at the end of measure 287.

a tempo





W



X



Y

Piu mosso



Z

