

1st E $\flat$  Horn

## LA GAZZA LADRA

Giacchino ROSSINI

Arr. José SCHYNS

Maestoso marziale

1

*f*

7

*mf* *p* 3 3

A

13

*f*

19

*p* *f* B

25

31

37

*mf* *p* 3 3 *f* C

43

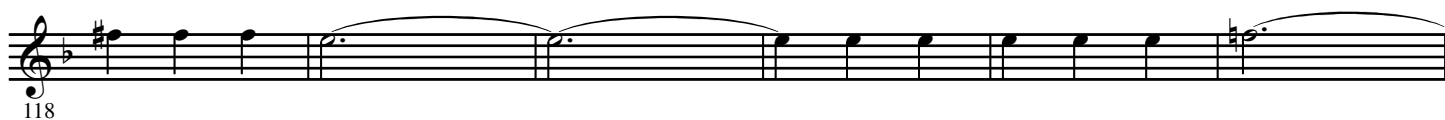
49

*mf* *p* *pp* cresc. D

56

*ff*

2.

- 1st E $\flat$  Horn -**E** Allegro con brio

130

I

136

142

J

148

*ff* 3

154

K

5

*pp*

164

170

L

*p*

176

M

5 4 7

195

*p* 3 3 3

203

N

3 3 11

4.

- 1st E $\flat$  Horn -

Sheet music for 1st E $\flat$  Horn, measures 219 to 273.

Measures 219-224: **O** (Octave) marking. Dynamics: *pp*. Triplet markings (3) are present.

Measures 225-230: Continuation of the melodic line with triplet markings (3).

Measures 231-236: **P** (Piano) marking. Dynamics: *p*. Triplet markings (3) are present.

Measures 237-242: *cresc.* (crescendo) marking. Triplet markings (3) are present.

Measures 243-248: Continuation of the melodic line with triplet markings (3).

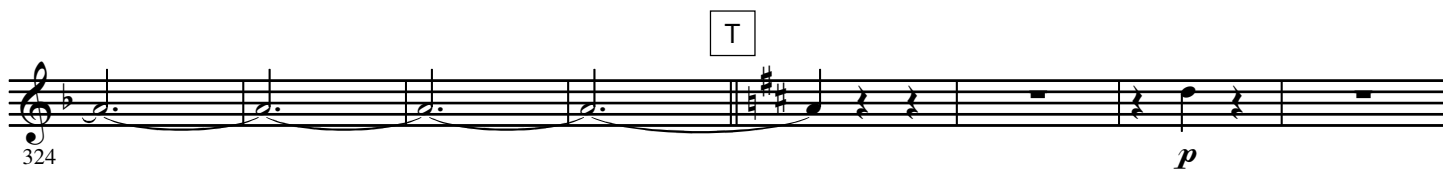
Measures 249-254: Continuation of the melodic line with triplet markings (3).

Measures 255-260: Continuation of the melodic line with triplet markings (3).

Measures 261-266: Continuation of the melodic line with triplet markings (3).

Measures 267-272: **Q** (Quarter) marking. Dynamics: *ff* (fortissimo).

Measure 273: Continuation of the melodic line with a slur over the final two measures.



6.

- 1st E $\flat$  Horn -

V

376 *p*

382

388 *cresc.*

394

400

W

406 *f*

412

418

424

X

430 *ff*

