

B \flat Bass

RUSLAN AND LYUDMILA

Overture to the Opera

M. I. GLINKA

Arr. José SCHYNS

Presto $\text{♩} = 136$

1 *ff*

7

12

17 *f*

23

31

39

47 *mf* *f* *ff*

54 *mf*

A

B

C

D

5

5

2.

- B \flat Bass -

E



F



83



91



G



106



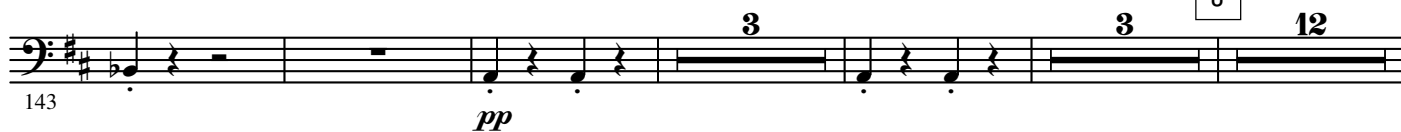
H



I



143



K



4.

- B \flat Bass -

285 **ff** R

293 **mf** **pp** S

302

311 **mf**

320 **ff** T

330 **mf** U **13** V

352 **f** *cresc.* **ff**

361 W

Piu mosso
373 **ff**

382 X

393