

B♭ Bass

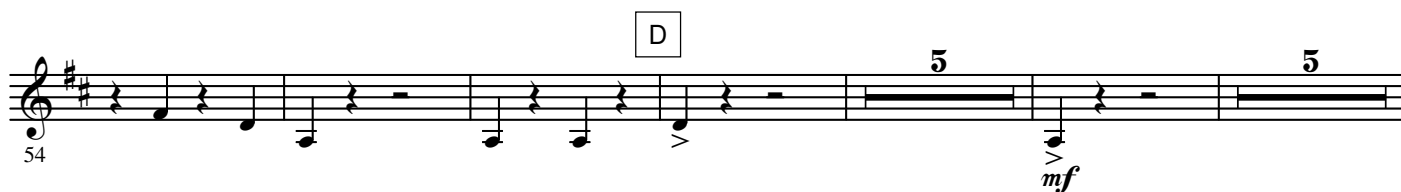
RUSLAN AND LYUDMILA

Overture to the Opera

M. I. GLINKA

Arr. José SCHYNS

Presto $\text{♩} = 136$



2.

- B \flat Bass -

Sheet music for B \flat Bass, measures 69 to 165. The music is in G major (one sharp) and 4/4 time. The key signature is G major (one sharp).

Measures 69-75: Section E. Dynamics: *ff*.

Measures 76-82: Section F. Dynamics: *p*, *pp*.

Measures 83-90: Section G. Dynamics: *mf*, *ff*.

Measures 91-105: Section H. Dynamics: *mf*, *ff*.

Measures 106-113: Section I. Dynamics: *sf*, *mf*, *ff*.

Measures 114-142: Section J. Dynamics: *pp*.

Measures 143-165: Section K. Dynamics: *f*, *ff*, *sf*, *mf*.

Rehearsal marks are indicated by letters E, F, G, H, I, J, and K in boxes. Measure numbers 69, 76, 83, 91, 99, 106, 114, 133, 143, and 165 are marked at the beginning of their respective staves. Section numbers 13, 4, 3, 3, and 12 are indicated above the staves.

172 *ff* *pp*

182 *f* *ff*

4.

- B \flat Bass -