

E♭ Bass

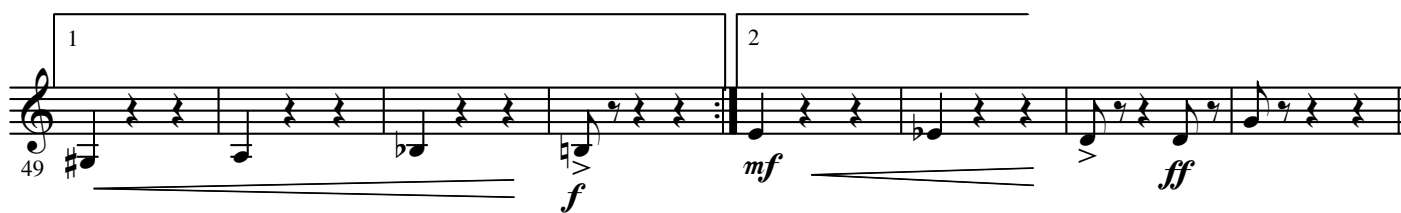
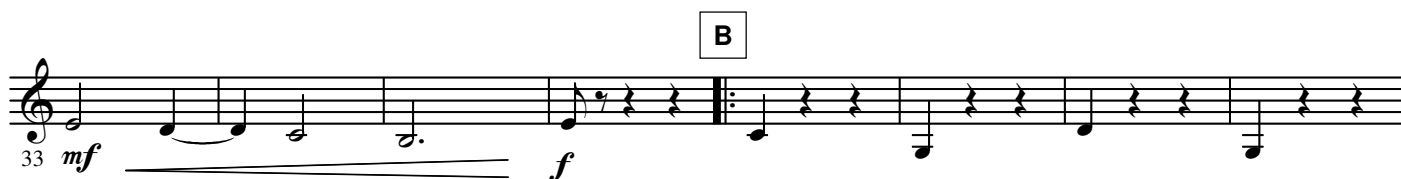
Waltz of the Flowers

from NUTCRACKER SUITE

Peter Illitch TCHAIKOVSKY

Arr. Yo KITANO

Tempo di Valse



D

73

81 *cresc.* *mf* *f*

E

89

97 *f*

F a tempo
one

105 *mf* *ff* *riten.* *pp*

112

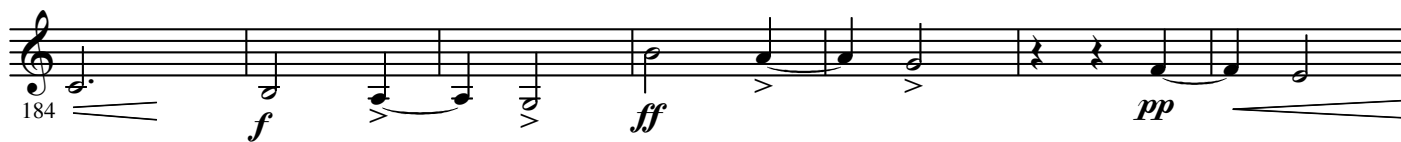
G

120 *p* *mp* *pp*

128

H All

136 *mf*



M

223 *f*

230

238 *f* *mf* *ff*

245

N

252 *ff*

O

259 *p* *cresc.*

P

266 *ff*

Q

273 *p* *cresc.*

R

280 *fff*

288