

B♭ Bass

# ROSEN AUS DEM SÜDEN

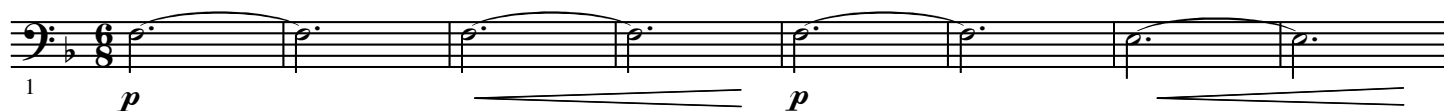
from the Musical Comedy "Das Spitzentuch der Königin"

Johann Strauss jr.

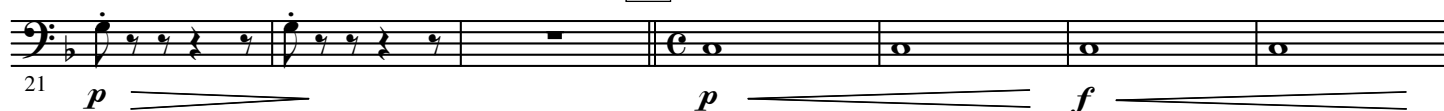
Arr. Yo KITANO

## Introduction

### Andantino



### B Allegro agitato



### C Tempo di Valse

### Waltz N° 1



### a tempo



### a tempo



2.

- B $\flat$  Bass -**F****G**

Waltz N° 2

**I****J**

2

161 *f*

D.S. al FINE *f*

Waltz N° 3

168 *p*

176 *f*

1

185 *f*

2

L

*p*

193 *f*

202 *f*

1

2

Waltz N° 4

209 *mf*

M

217 *rit.*

a tempo

225

N

232 *rit.*

a tempo

4.

- B $\flat$  Bass -

240 *f* O

248

256 P

264

272

279 Q CODA *f*

287 R *p*

295

303 S *p*



6.

- B $\flat$  Bass -

Y



Z

