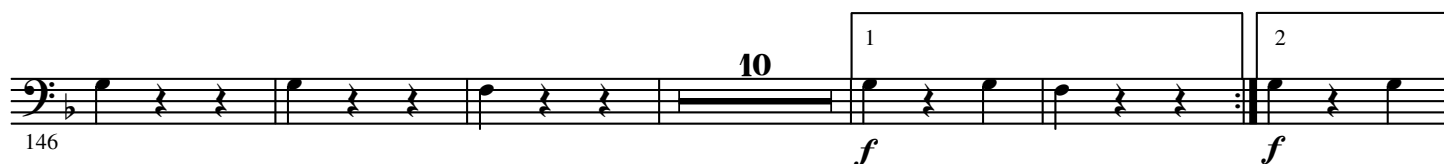
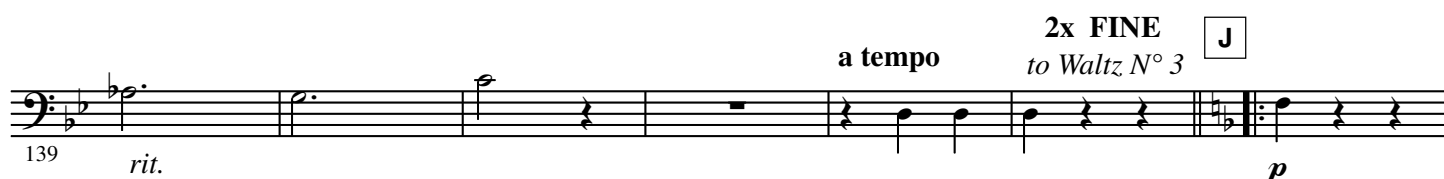
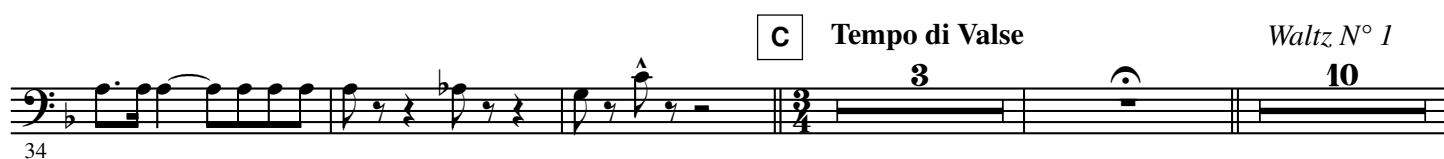
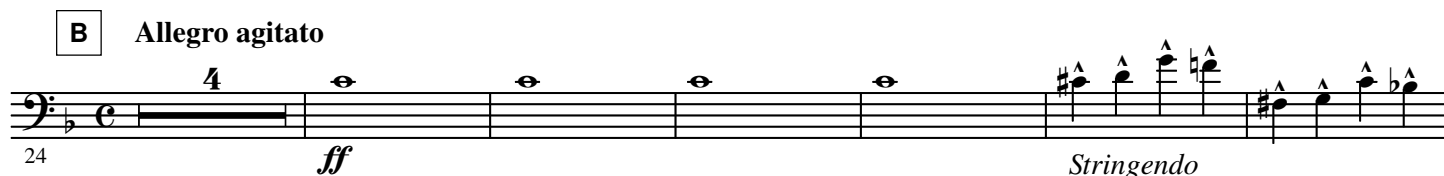
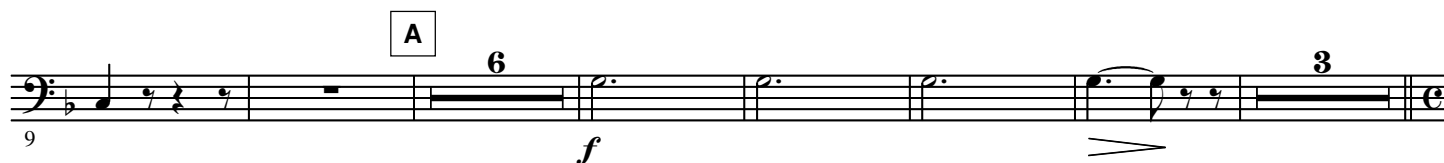
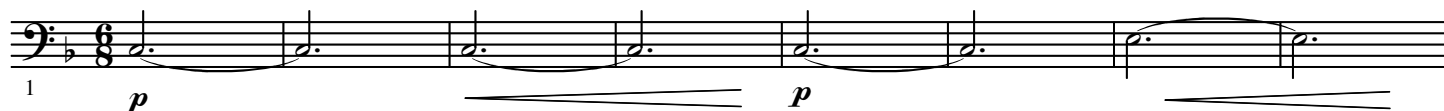


## Introduction

## Andantino



2.

- 2nd B $\flat$  Trombone -

12

169

*f*

1

2

*f*

L

13

187

*f*

1

2

Waltz N° 4

206

*f*

M

*mf*

213

a tempo

220

*rit.*

N

227

a tempo

234

*rit.*

O

241

*f*

248

255

P



262



269



276




Q CODA

283

*f*

2

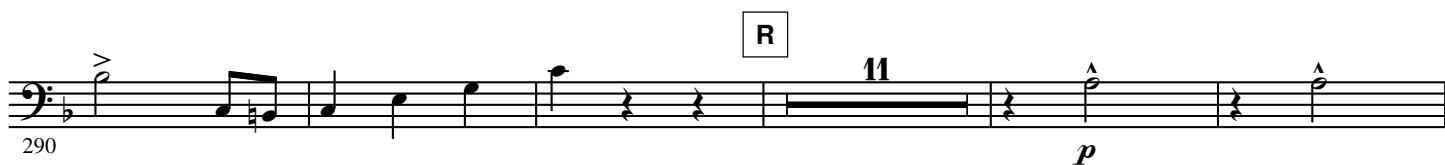


290

R

11

*p*



306

S

7



317

*p*



324

T

16

U

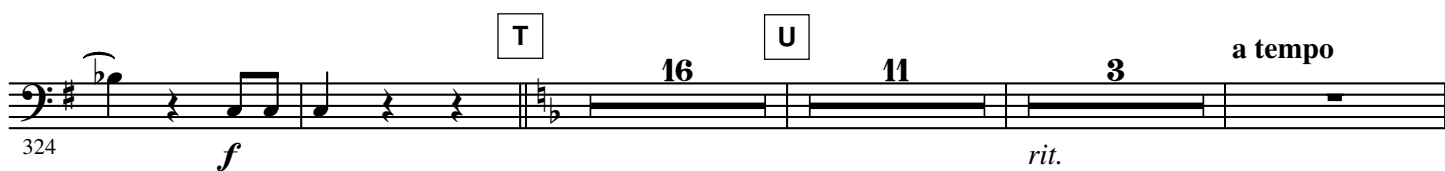
11

3

*f*

*rit.*

a tempo



4.

- 2nd B $\flat$  Trombone -

357 V **4** **3** *a tempo* W *p*

369 X *f*

376

383

390 Y

397

404 Z

411

418