

E♭ Bass

ROSEN AUS DEM SÜDEN

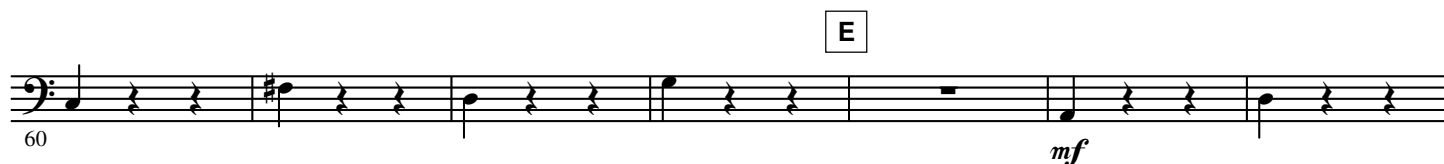
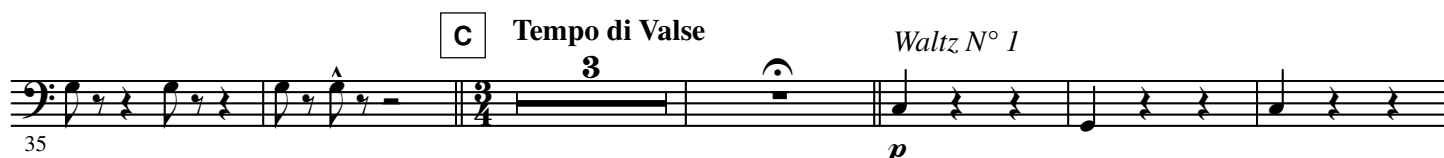
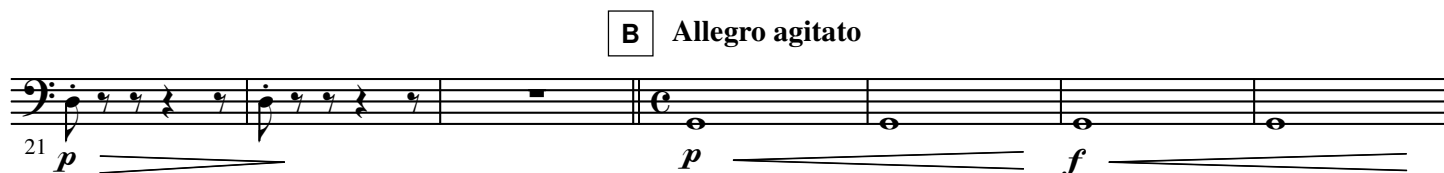
from the Musical Comedy "Das Spitzentuch der Königin"

Johann Strauss jr.

Arr. Yo KITANO

Introduction

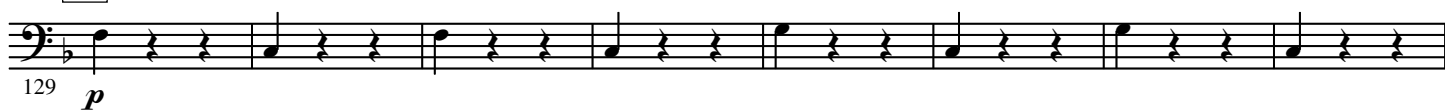
Andantino



2.

- E \flat Bass -**F****G**

§ **H** Waltz N° 2

**I****J**

2x FINE
a tempo to Waltz N° 3

2

161 *f*

D.S. al FINE *f*

Waltz N° 3

168 *p*

176 *f*

1

185 *f*

2

L

p

193 *f*

202 *f*

1

2

Waltz N° 4

209 *mf*

M

217 *rit.*

a tempo

225

N

232 *rit.*

a tempo

4.

- E \flat Bass -

O



P



Q CODA

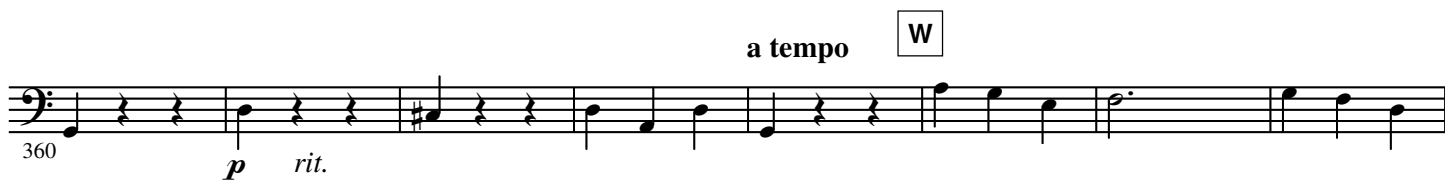
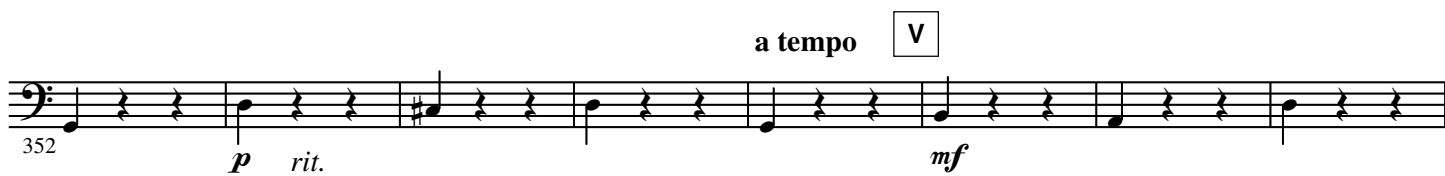


R



S





6.

- E \flat Bass -

Y



Z

