

## ROSEN AUS DEM SÜDEN

from the Musical Comedy "Das Spitzentuch der Königin"

Johann Strauss jr.

Arr. Yo KITANO

## Introduction

## Andantino



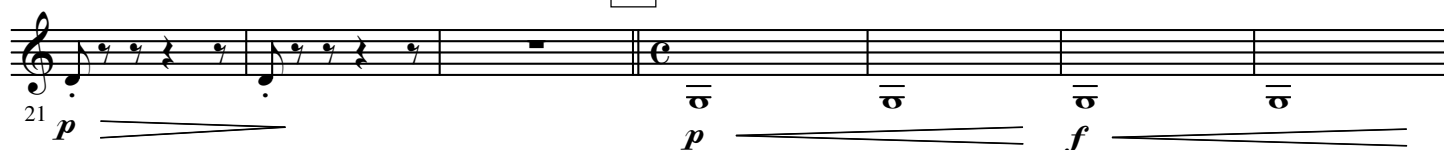
A

6



B

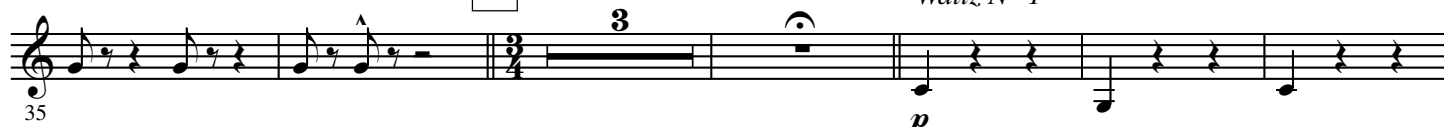
## Allegro agitato



C

## Tempo di Valse

## Waltz N° 1



D



E



## a tempo



## a tempo



2.

- E $\flat$  Bass -

F



G



H Waltz N° 2



I

2x FINE  
a tempo to Waltz N° 3

J



2

Waltz N° 3

161 *f*

D.S. al FINE *f*

168 *p*

176 *f*

185 *f*

L

*p*

193 *f*

202 *f*

Waltz N° 4

209 *mf*

M

217 *rit.*

a tempo

225

N

232 *rit.*

a tempo

4.

- E $\flat$  Bass -

O



P



Q CODA

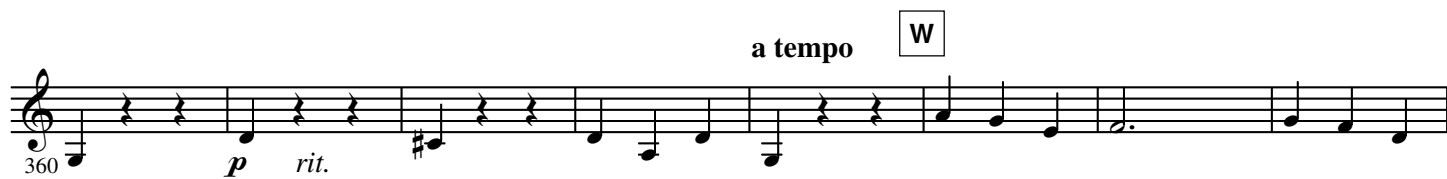
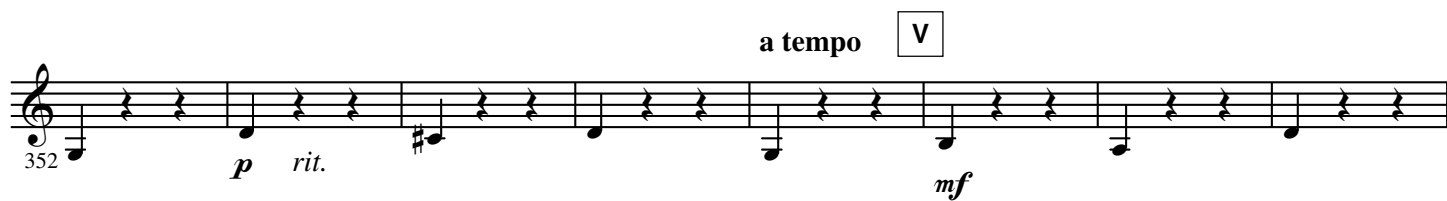
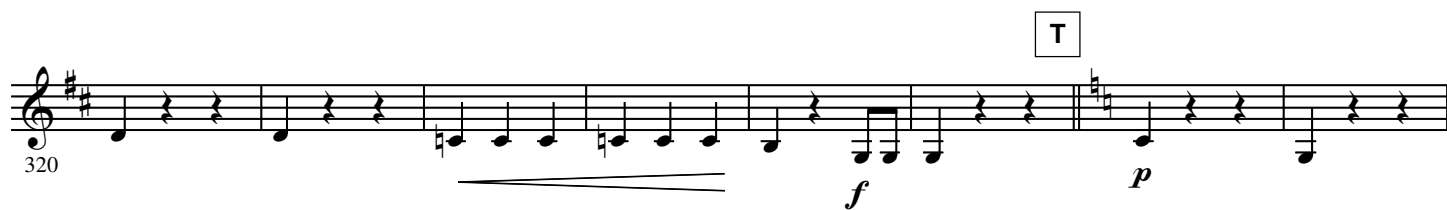


R



S





6.

- E $\flat$  Bass -

Y



Z

