

1st E \flat Horn

ROSEN AUS DEM SÜDEN

from the Musical Comedy "Das Spitzentuch der Königin"

Johann Strauss jr.

Arr. Yo KITANO

Introduction

Andantino



A



B

Allegro agitato



C

Tempo di Valse



Waltz N° 1



D



E



a tempo



a tempo



2.

- 1st E \flat Horn -

F

81 *p*

89 *f*

G

97 *p*

105 *f*

Waltz N° 2

H

113 *p*

121 *f*

I

129 *p*

a tempo **2x FINE**
to Waltz N° 3

137 *rit.*

J

145 *p*

153 *f*

2

161 *f* D.S. al FINE *f* **K** Waltz N° 3

169 *p*

178 *f* *f*

1 2

187 *p* **L**

196 *f*

1

205 *f* *mf* **M** Waltz N° 4

2

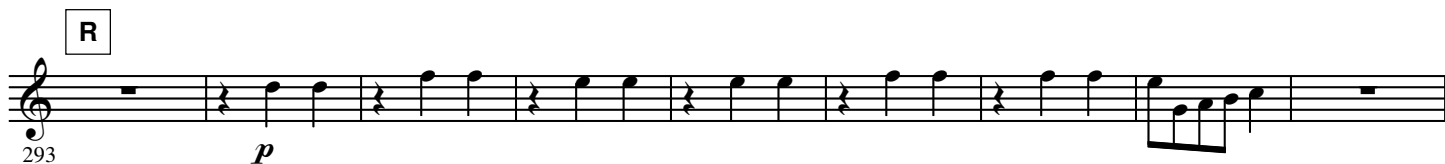
213

221 *rit.* *a tempo* **N**

228

236 *rit.* *a tempo*

4.

- 1st E \flat Horn -

337 U

346 *mf* *pp rit.*

a tempo V *mf* *rit.* a tempo

355

W

365

X *f*

374

382

Y

391

Z

399

407

416