

2nd E♭ Horn

ROSEN AUS DEM SÜDEN

from the Musical Comedy "Das Spitzentuch der Königin"

Johann Strauss jr.

Arr. Yo KITANO

Introduction

Andantino



A



B Allegro agitato



C Tempo di Valse



Waltz N° 1



D



E



a tempo



a tempo



2.

- 2nd E \flat Horn -

F

81 *p*

89 *f*

G

97 *p*

105 *f*

Waltz N° 2

H

113 *p*

121 *f*

I

129 *p*

rit.

a tempo

2x FINE
to Waltz N° 3

137 *rit.*

J

145 *p*

153 *f*

2

161 *f* D.S. al FINE *f*

Waltz N° 3

169 *p*

178 *f* *f*

1 2

187 *p*

L

196 *f*

1

205 *f* *mf*

2

Waltz N° 4

M

213

221 *rit.* *a tempo*

N

228

236 *rit.* *a tempo*

4.

- 2nd E \flat Horn -

O

243 *f*

P

252

261

269

Q CODA

277 *f*

285

R

293 *p*

302

S

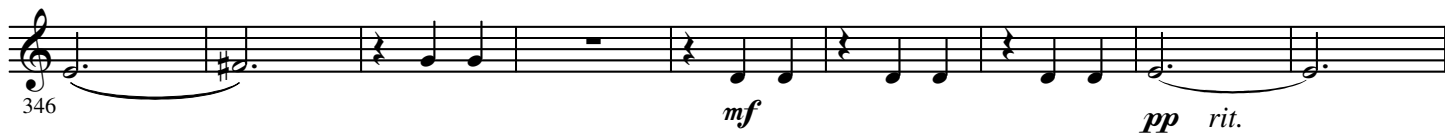
310 *p*

T

319 *f* *p*

328

U



a tempo

V

a tempo



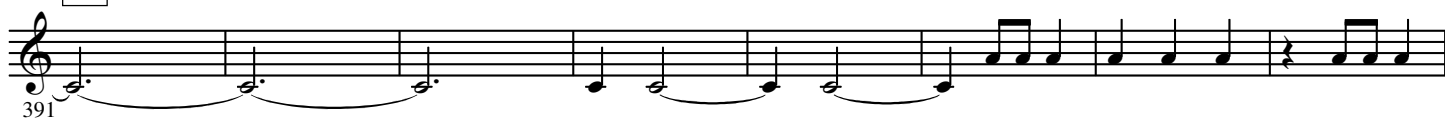
W



X



Y



Z

