

3rd E $\flat$  Horn

## ROSEN AUS DEM SÜDEN

from the Musical Comedy "Das Spitzentuch der Königin"

Johann Strauss jr.

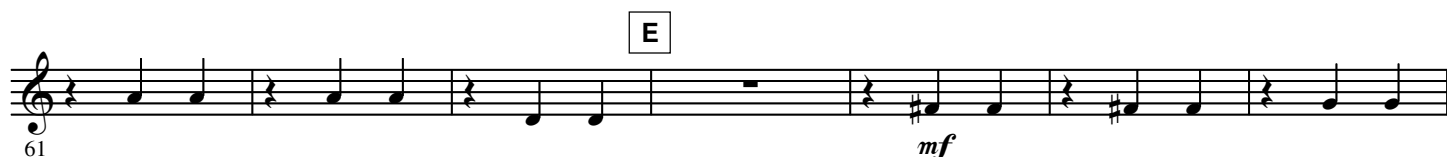
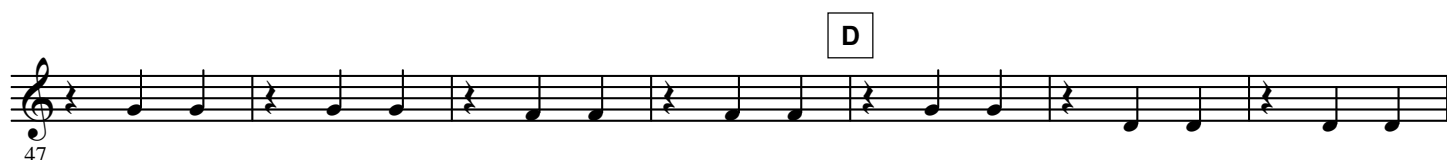
Arr. Yo KITANO

## Introduction

## Andantino



## Waltz N° 1



2.

- 3rd E $\flat$  Horn -

**F**

81 *p*

89 *f*

**G**

97 *p*

105 *f*

**H** Waltz N° 2

113 *p*

121 *f*

**I**

129 *p*

*rit.* **a tempo** 2x FINE to Waltz N° 3

137 *rit.* *a tempo* 2x FINE to Waltz N° 3

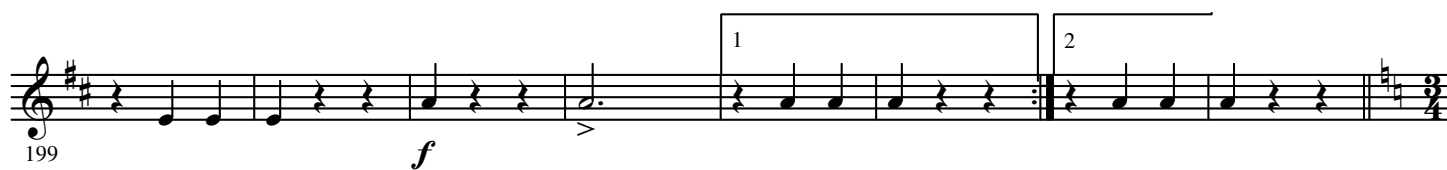
**J**

145 *p*

**6** 1 2 **D.S. al FINE**

153 *f* *f* **D.S. al FINE**

**K** Waltz N° 3



Waltz N° 4



4.

- 3rd E $\flat$  Horn -

O



P



Q CODA



R



S



T



337

U



345

*mf*



353

*rit.* *pp* *mf* *rit.*

a tempo

V



364

a tempo

W



372

*f*

X

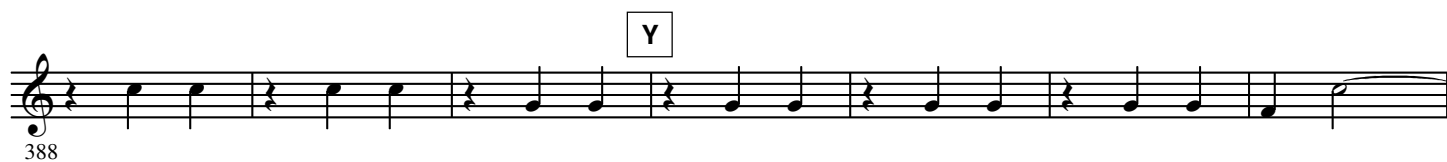


380



388

Y

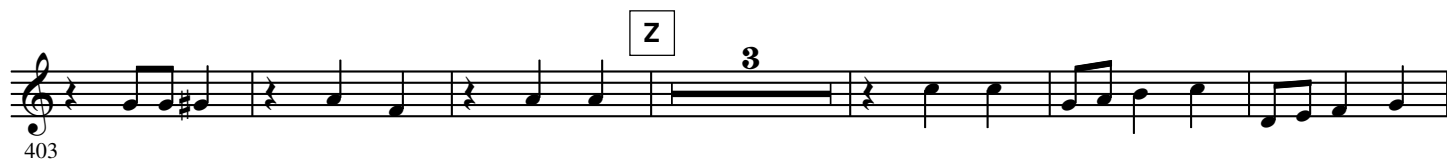


395



403

Z



412



419

