

4th E♭ Horn

ROSEN AUS DEM SÜDEN

from the Musical Comedy "Das Spitzentuch der Königin"

Johann Strauss jr.

Arr. Yo KITANO

Introduction

Andantino



A



B

Allegro agitato



C

Tempo di Valse



Waltz N° 1

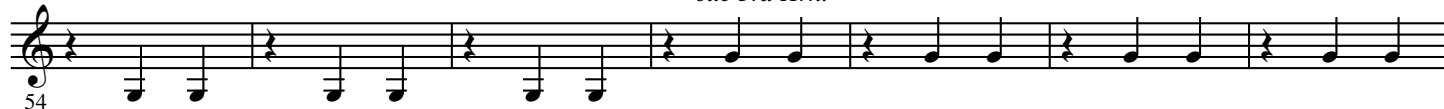
cue 3rd Hrn.



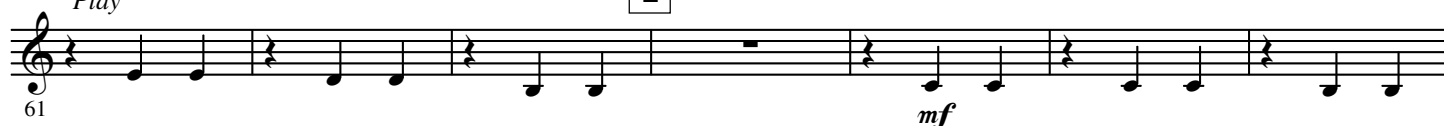
D



cue 3rd Hrn.



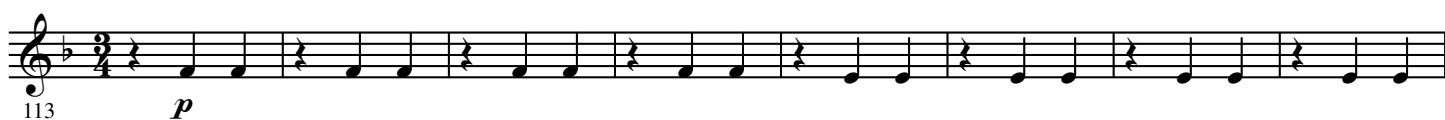
E



2.

- 4th E \flat Horn -**F****G**

Waltz N° 2

**I**

a tempo

2x FINE
to Waltz N° 3

J

cue 3rd Hrn.

Play

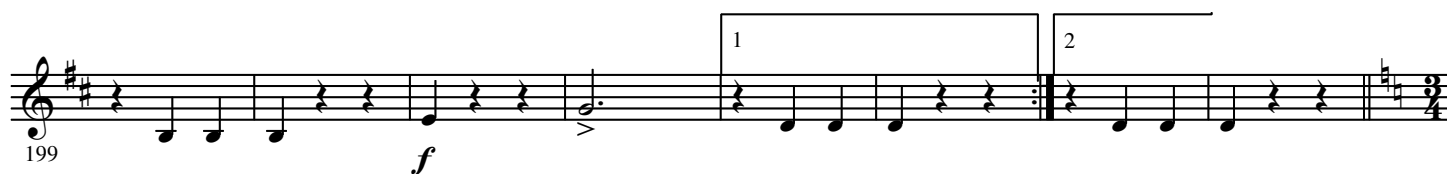
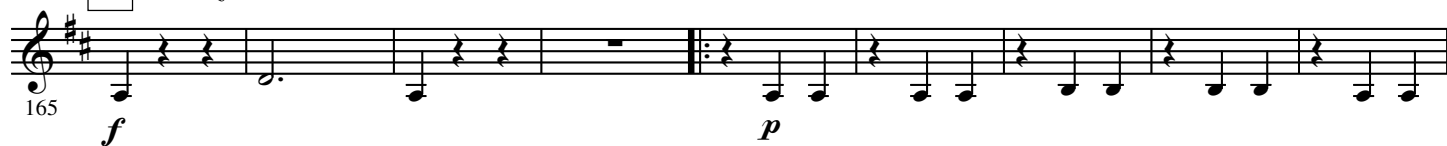
cue 3rd Hrn.

Play



D.S. al FINE

K Waltz N° 3



Waltz N° 4



4.

- 4th E \flat Horn -

O



P



Q CODA



R



S



T

cue 3rd Hrn.



337 U *cue 3rd Hrn.*

345 *Play* *mf*

353 *rit.* *a tempo* V *pp* *mf* *rit.*

364 *a tempo* W

372 X *f*

380

388 Y

395

403 Z *3*

412

419