

B \flat Bass

CONCERTO in D Major

for Flute and Wind Band

Carl REINECKE Op. 283

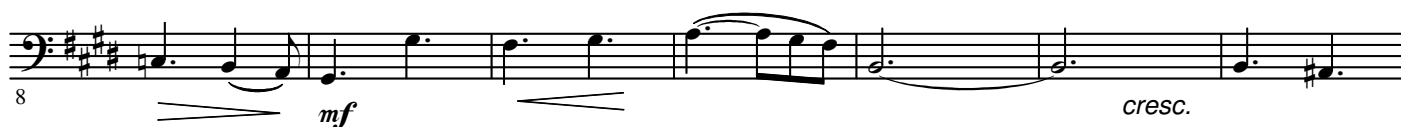
Arranged by José SCHYNS

I

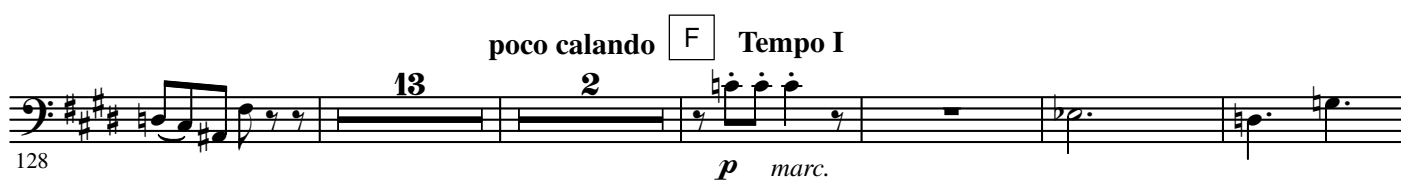
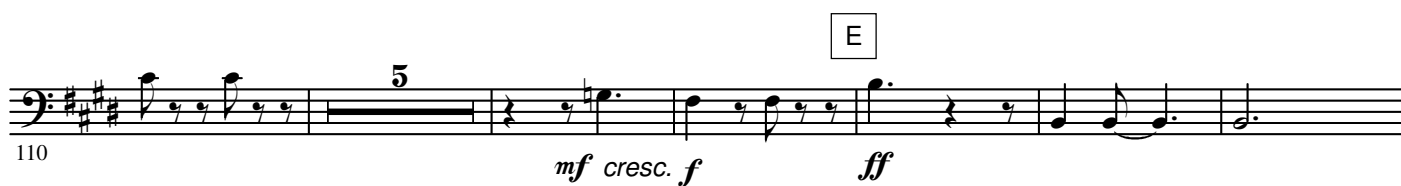
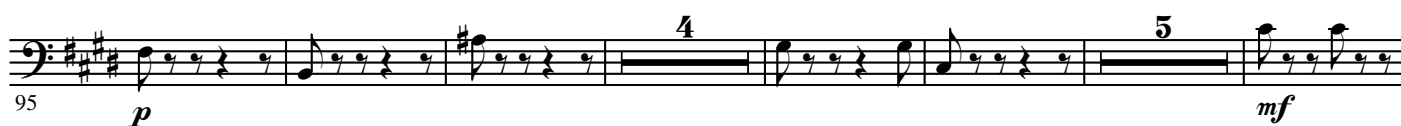
Allegro moderato

colla parte

a tempo ♩ = 176



2.

- B \flat Bass -

163

175

one cue St. B.

dolce

182

tranquillo

a tempo

6

7

one cue St. B.

pp

200

K Animato

$\text{♩} = 184$

207

All Play

p

mf

3

2

217

p

cresc.

224

L Tempo I

ff

231

one cue St. B.

decresc.

p

pp

238

colla parte

a tempo

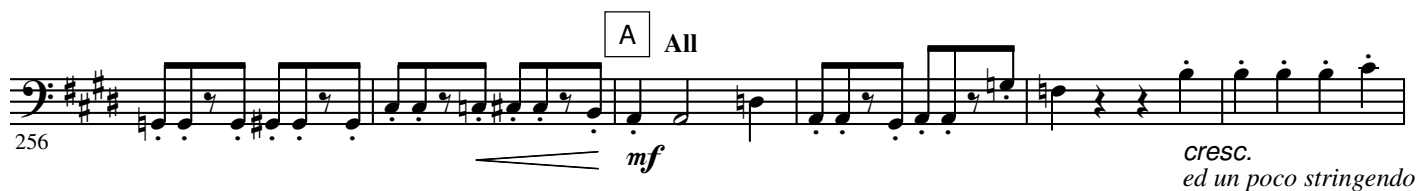
pp

Lento e mesto $\text{♩} = 68$

II

8^{va} ad lib.

one



E poco rit. molto tranquillo

304 *mf* *pp* *pp*

310 *pp*

triquillo

Finale
Moderato $\text{♩} = 88$

III

317 *mf* *f* *p*

A

330 *mf* *f* *p*

un poco rit. a tempo

338 *p* *p*

B

350 *f* *ff*

$\text{♩} = \text{♩} \cdot 3$

358 *p*

C $\text{♩} = \text{♩}$

368 *p*

D

380 *p*

10

399

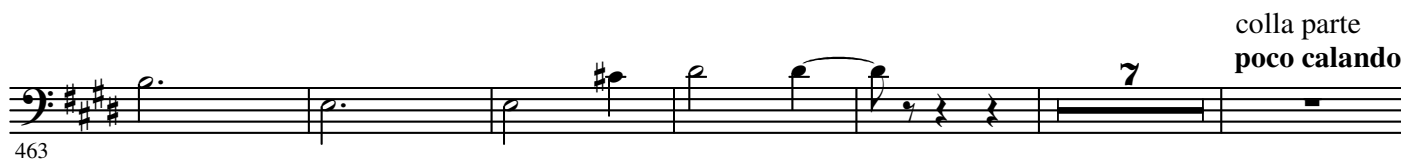
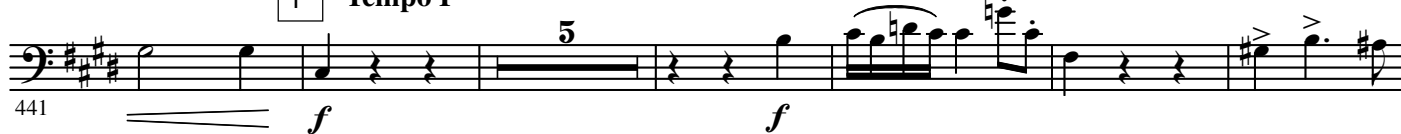
6.

- B \flat Bass -

E in tempo animato



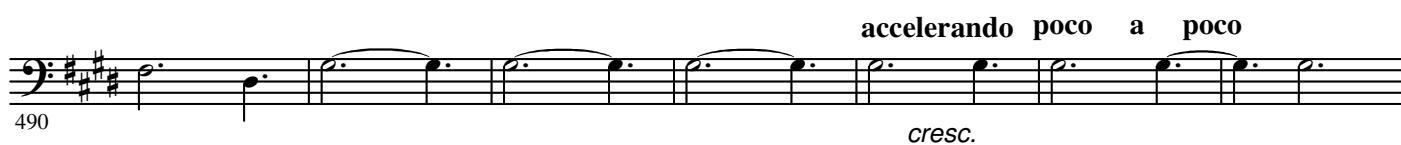
F Tempo I



a tempo



H Più mosso



497 *f*

502 *f* *mf*

I Più mosso ♩ = 136

14

522

530 *f*

K

538 *ff*

545 **Maestoso**