

B $\flat$  Bass 

# CONCERTO in D Major

for Flute and Wind Band

Carl REINECKE Op. 283

Arranged by José SCHYNS

## I

**Allegro moderato** *colla parte* **a tempo**  $\text{♩} = 176$



1 *p* *mf*

8 *mf* *cresc.*

15 *f* *f* *p*

22 *pp* *p* **2**

31 **un poco slentando**

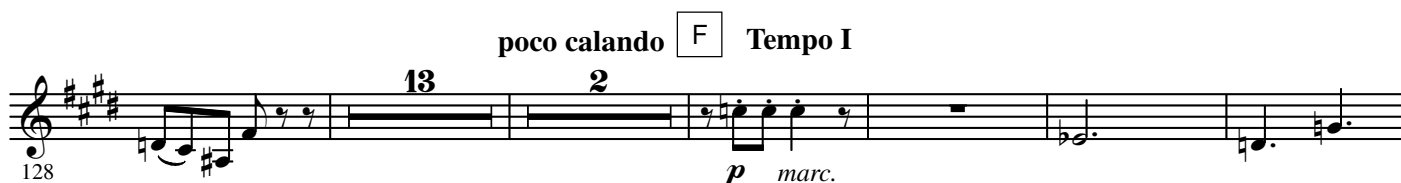
39 **a tempo** **4** *p* **3**

51 **animato** *one cue St. B.* *All Play* *p*

58 *p* *f*

66 **C** **un poco meno mosso**  $\text{♩} = 168$  *ff* *f* **2**

2.

- B $\flat$  Bass -

163

5 H 2

175

one cue St. B.

*dolce*

182

tranquillo

a tempo

6 7

one cue St. B.

*pp*

200

Animato

K  $\text{♩} = 184$

207

All Play

3 2

*p* *mf*

217

*p* *cresc.*

224

L Tempo I

*ff*

231

one cue St. B.

*decresc.* *p* *pp*

238

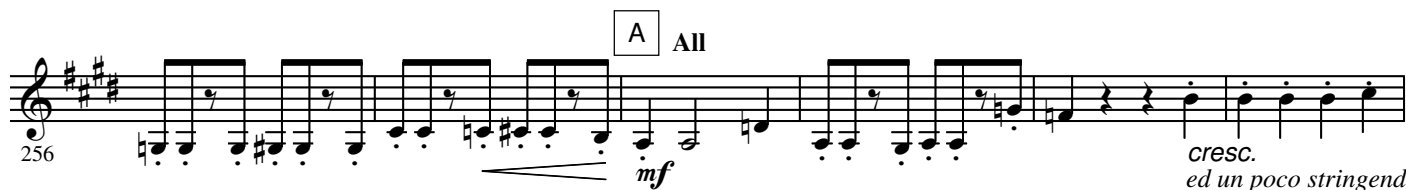
colla parte

a tempo

*pp*

Lento e mesto  $\text{♩} = 68$ 

## II

8<sup>va</sup> ad lib.

**E** poco rit. molto tranquillo

304 *mf* *pp* *pp*

310 *pp*

tranquillo

Finale  
Moderato ♩ = 88

**III**

317 *mf* *f* *p*

**A**

330 *mf* *f* *p*

338 *p* *p*

un poco rit. a tempo

350 *f* *ff*

358 *p*

368 *p*

380 *p*

399 *p*

6.

- B $\flat$  Bass -

**E** in tempo animato



**F** Tempo I



colla parte  
poco calando

a tempo



**H** Più mosso



accelerando poco a poco

