

E♭ Bass

# CONCERTO in D Major

for Flute and Wind Band

Carl REINECKE Op. 283

Arranged by José SCHYNS

## I

**Allegro moderato** colla parte **a tempo** ♩ = 176

1 *p* *mf* *cresc.*

8 *mf* *cresc.*

15 *f* *f* *p*

**A**

22 *pp* *p*

**poco calando** **a tempo** **2**

31 **un poco slentando**

39 **B** **a tempo** **4** **3** *p*

**animato** **one cue St. B.** **All Play**

51 *p* *p*

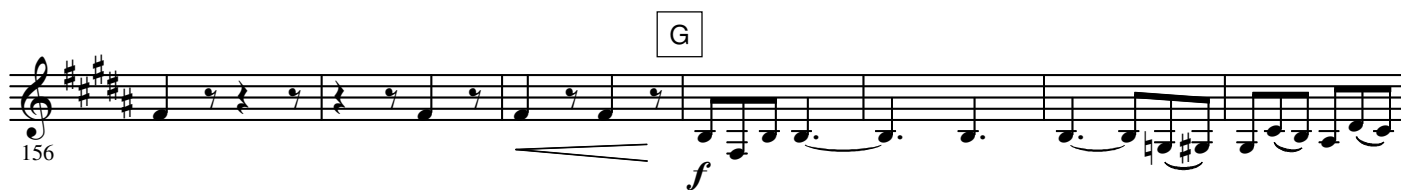
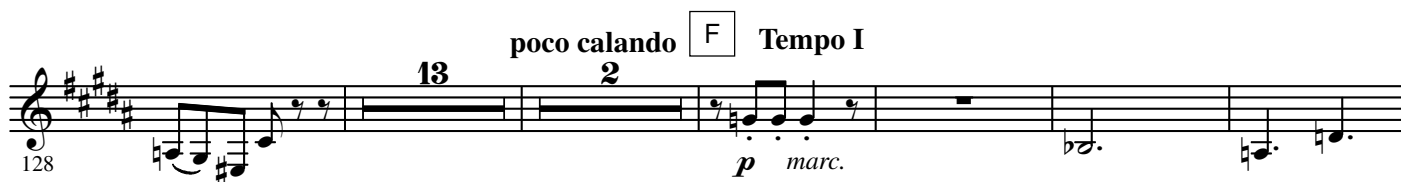
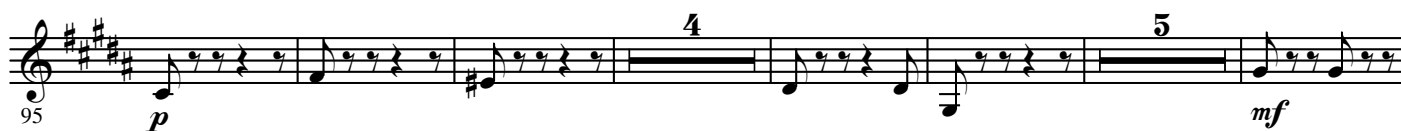
58 *p* *f*

**C** **un poco meno mosso** ♩ = 168

66 *ff* *f* **2**

2.

- E♭ Bass -



163

5 H 2

175

one cue St. B.

*dolce*

182

tranquillo

a tempo

6 7

one cue St. B.

*pp*

*pp*

200

K

Animato

♩ = 184

*pp*

207

All Play

*p*

3

*mf*

2

*mf*

217

*p*

*cresc.*

*cresc.*

224

L

Tempo I

*ff*

*ff*

231

*decresc.*

*p*

*pp*

one cue St. B.

*pp*

238

colla parte

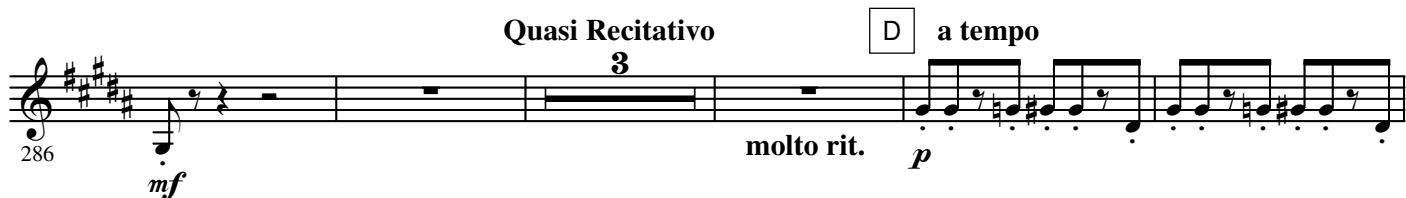
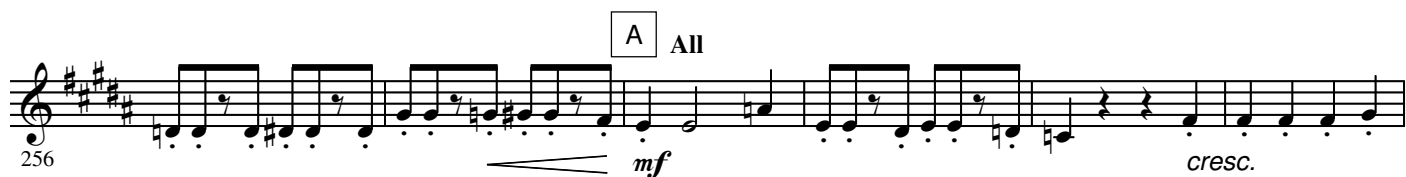
a tempo

*pp*

*pp*

## II

Lento e mesto ♩ = 68



**E** poco rit. molto tranquillo

304 *mf* *pp* *pp*

310 *pp*

tranquillo

Finale Moderato ♩ = 88

**III**

5 All 2

317 *mf* *f* *p* *f* *p* *f* *p* *f*

**A**

330 *mf* *f* *p* *p* *p* *p* *p* *p*

5 un poco rit. a tempo

338 *p* *p* *p* *p* *p* *p* *p* *p*

**B**

350 *f* *ff* *p* *p* *p* *p* *p* *p*

358 *p*

**C** ♩ = ♩

368 *p* *p* *p* *p* *p* *p* *p* *p*

**D** 8

380 *p* *p* *p* *p* *p* *p* *p* *p*

10

399 *p* *p* *p* *p* *p* *p* *p* *p*

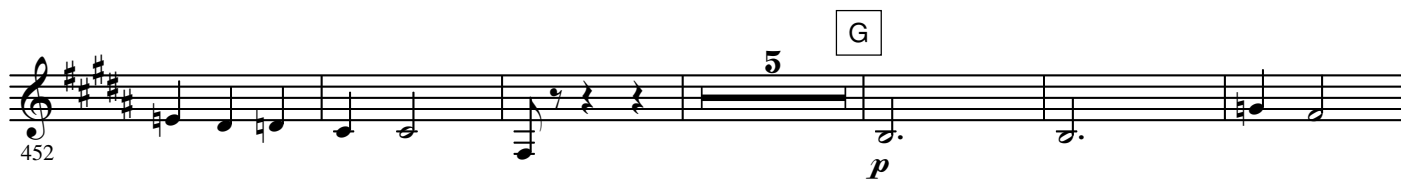
6.

- E♭ Bass -

**E** in tempo animato



**F** Tempo I



a tempo



**H** Più mosso



