

1st E $\flat$  Horn**CONCERTO in D Major***for Flute and Wind Band***Carl REINECKE Op. 283***Arranged by José SCHYNS***I**

**Allegro moderato** *colla parte* **a tempo**  $\text{♩} = 176$

*p* *mf* *cresc.*

**A** *f* *f* *5*

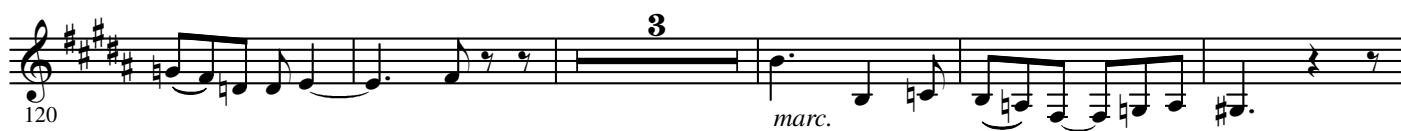
**poco calando** *2* **a tempo** *p*

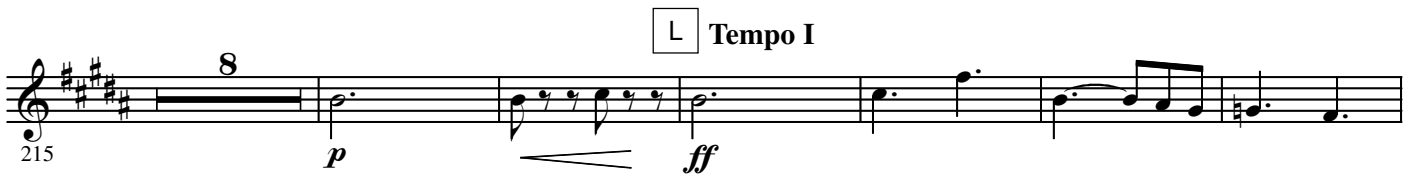
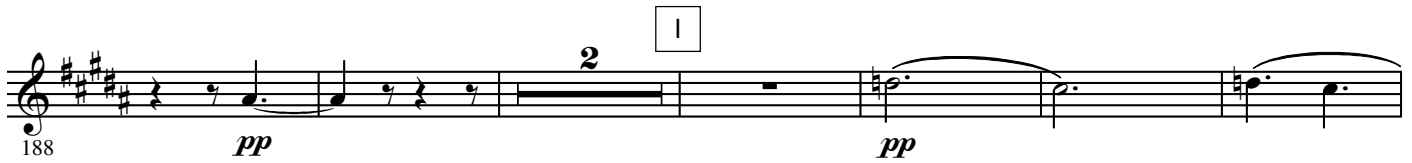
**un poco slentando** **B** *a tempo* *p* *2*

**animato** *7* *solo* *mf* *solo*

**C** **un poco meno mosso**  $\text{♩} = 168$  *mf* *cresc.* *f* *ff*

*f* *2* *p* *5*





## II



4.

- 1st E♭ Horn -

284 *sf* *f* *mf* *p* Quasi Recitativo 3 molto rit.

292 D a tempo 12 E poco rit. molto tranquillo *mf* *pp*

309 2 tranquillo *p* *p*

Finale  
Moderato ♩ = 88

## III

317 *p* marc.

324

331 A 15 un poco rit. a tempo 6 B *p* *ff*

357 *f*

364 ♩ = ♩. *p* *pp* solo

370 espressivo *mf* *p* C ♩ = ♩. 4

379 3 *p*

388 *p* **D**

395 *mf* *cresc.* **E** in tempo animato 18

418 *f* *con brio* *p*

423 *mf* **3**

432 *p* *f* **F** Tempo I 5

443 *f*

450 *mf* *espressivo* *solo* **G** 8

464 *colla parte poco calando* **7** **2**

477 *a tempo* *p* **H** Più mosso accelerando 4 2 10 5

499 *f* **I** Più mosso ♩ = 136 15

6.

- 1st E $\flat$  Horn -