

# CONCERTO in D Major

1st B $\flat$  Trombone  $\text{B}\flat$

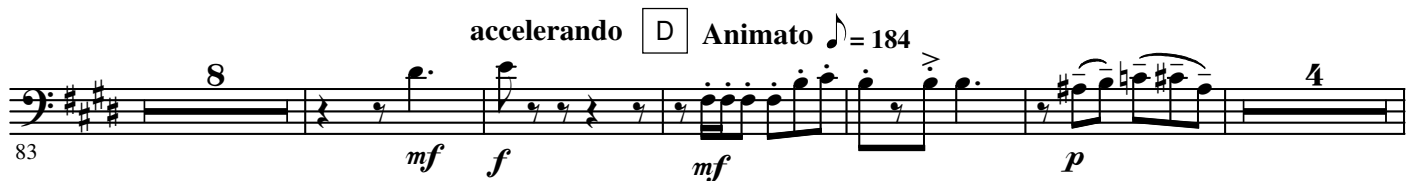
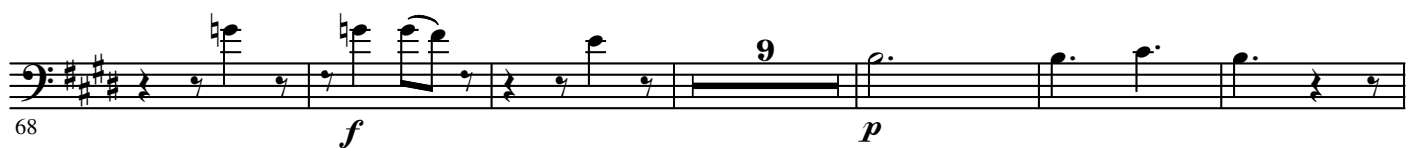
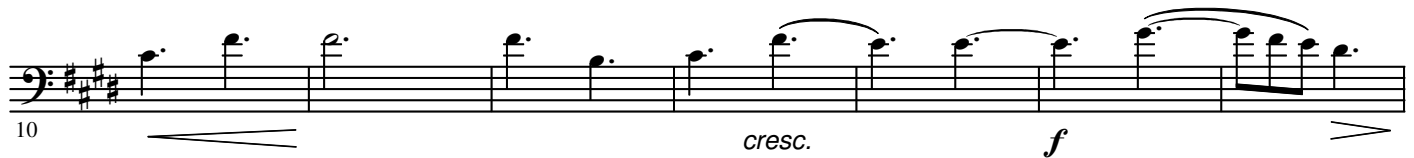
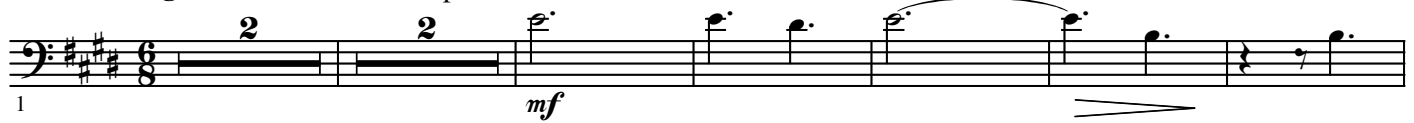
for Flute and Wind Band

Carl REINECKE Op. 283

Arranged by José SCHYNS

## I

Allegro moderato colla parte a tempo  $\text{♩} = 176$



146 *p* *mf*

157 *pp* *f*

163 *pp* *f*

184 *pp*

197 *mf* *mf*

214 *ff*

230 *ff*

## II

245 *Lento e mesto* *calando* *a tempo* *poco rit.*

276 *pp* *ff* *f*

283 *pesante* *mf* *p* *molto rit.*

**D** a tempo 12 **E** poco rit. molto tranquillo 9 tranquillo 2

292

Finale  
Moderato  $\text{♩} = 88$

### III

317 *p* marc.

324

**A** 4 *p* 7

331

un poco rit. 2 a tempo 7 **B** *ff*

347

$\text{♩} = \text{♩}$  10 *f* *p* >

361

**C**  $\text{♩} = \text{♩}$  13 **D** 12 *p* 10

377

**E** in tempo animato 19 5 *p* *f* **F** Tempo I

416

445 *f*

colla parte poco calando a tempo 7 **H** Più mosso 10 accelerando 5

452

4.

- 1st B $\flat$  Trombone -

499

*f*

**Più mosso** ♩ = 136

16

*f*

3 3

519

3 3 3

530

**K**

*f* *f* *f*

538

*ff*

545

**Maestoso**

*sf*