

COLAS BREUGNON OVERTURE

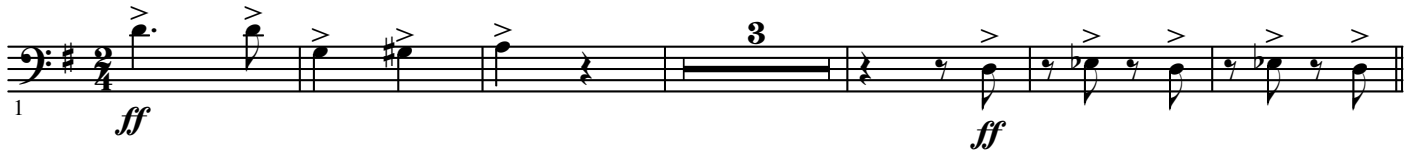
3rd B♭ Trombone

from the Opera "Le Maître de Clamecy"

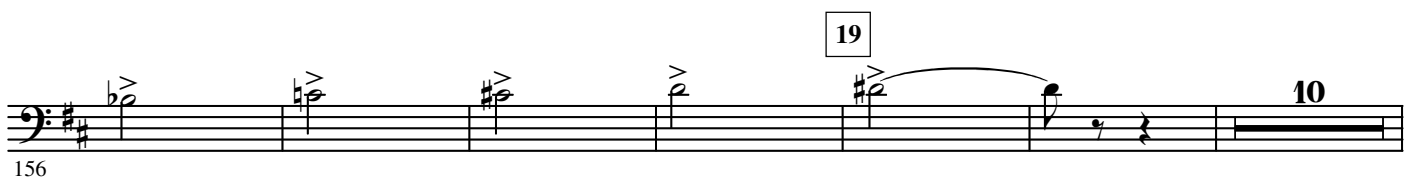
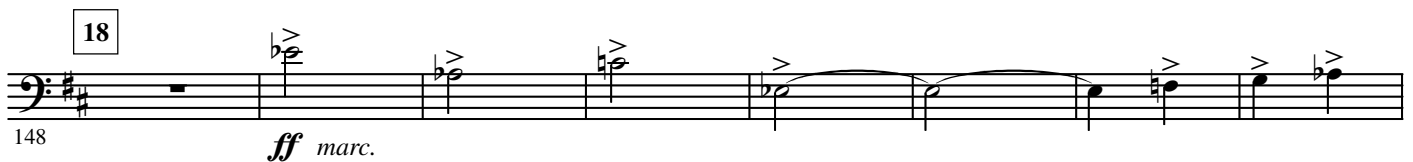
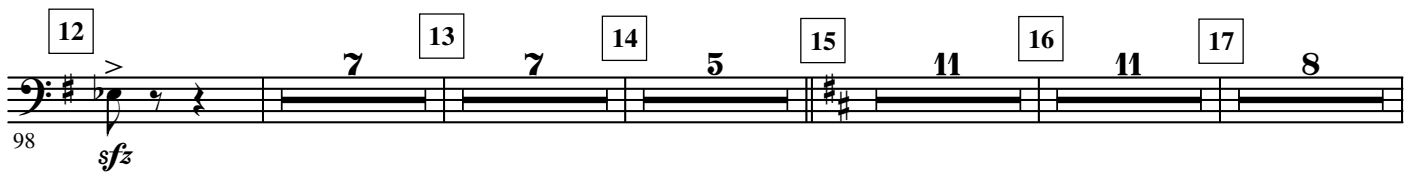
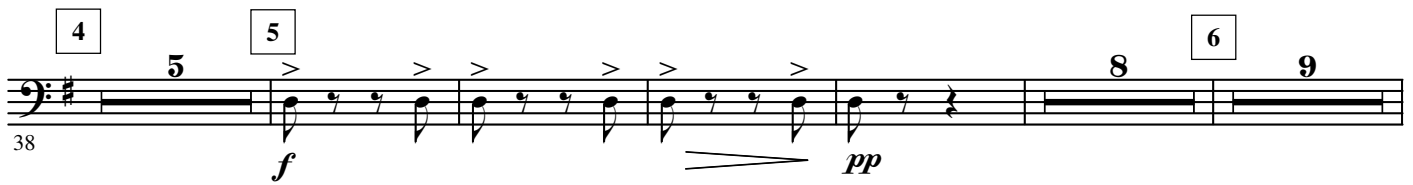
Dmitri KABALEVSKY Op. 24

Arr. José SCHYNS

Allegro ♩ = 132



1 Presto (♩ = ♩)



© See full score

Authorized Edition: **HAFABRA Music - Louis MARTINUS**
84, Village / Dorp B- 3790 FOURONS / VOEREN (Belgium)
Tel. ++32(0)4.381.23.28 - Fax. ++32(0)4.381.23.52
www.hafabramusic.com

All rights reserved
for all countries

2.

- 3rd B \flat Trombone -

20
172
ff *sf* *cresc.*

21
180
sfz *sf* *cresc.*

22 23 24
188
sfz *ff*

25 26
213
16 10

L'istesso tempo
27 28 29 30
244
(♩ = ♩) 8 8 12 9 allarg.

31 a tempo
282
ff

33
292
cresc.

34 allarg. Presto (♩ = ♩) 35
302
fff 10 8

36 37 38 39
324
12 7 5 *f* *sf* *f*

40
352

359 *cresc.* *f* *ff*

366 *sfz*

385 *ff*

414 *mf*

448

486 *f* *cresc.* *ff*

492

500

510 *fff* *sfz*

Measures 359-60 are shown across eight staves. The key signature is one sharp (F#). The score includes various musical notations such as accents, dynamics (*cresc.*, *f*, *ff*, *sfz*, *mf*, *fff*), and articulation marks. Measure numbers 359, 366, 385, 414, 448, 486, 492, 500, and 510 are indicated at the start of their respective staves. Measure numbers 41, 42, 43, 44, 45, 46, 47, 48, 49, 50, 51, 52, 53, 54, 55, 56, 57, 58, and 59 are enclosed in boxes above the staves. Some measures contain numerical values (3, 7, 8, 11, 12, 4) indicating fingerings or other performance instructions. The score concludes with a double bar line at measure 60.