

3rd B♭ Trombone

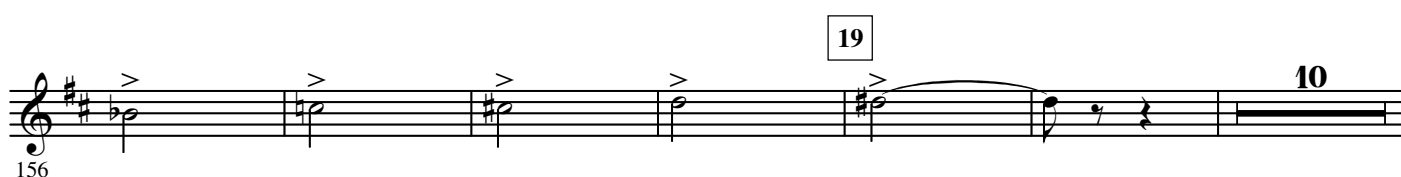
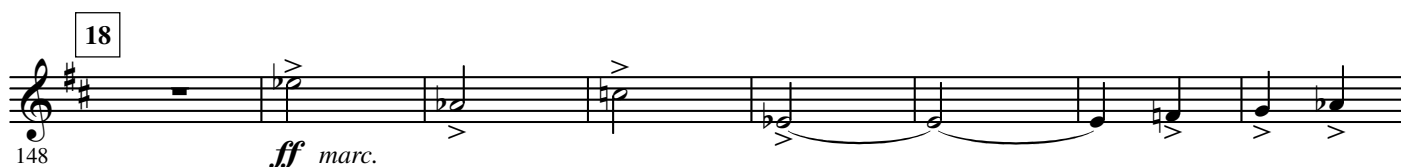
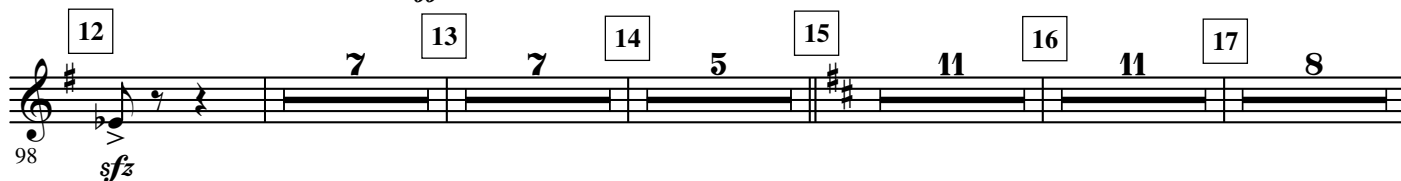
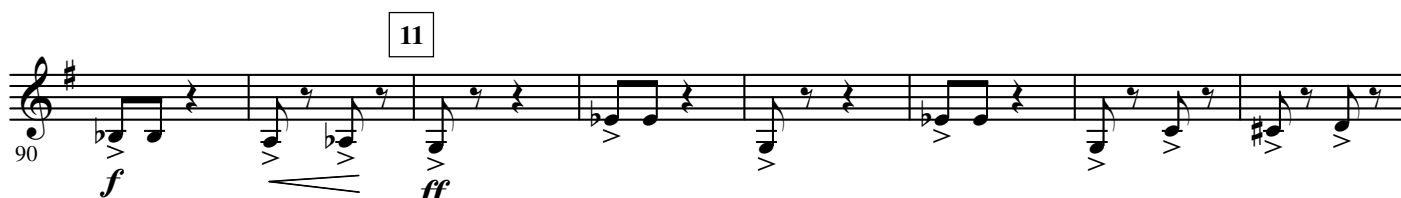
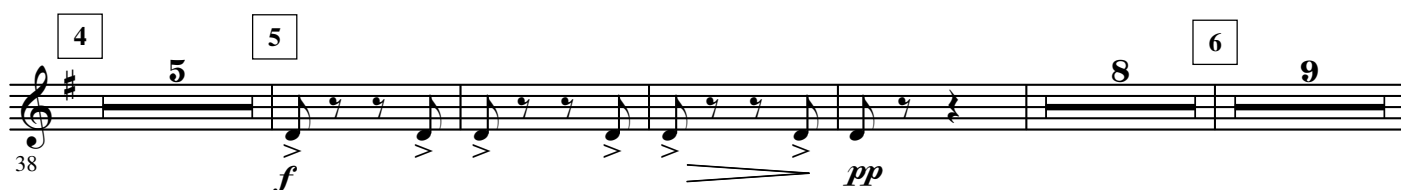
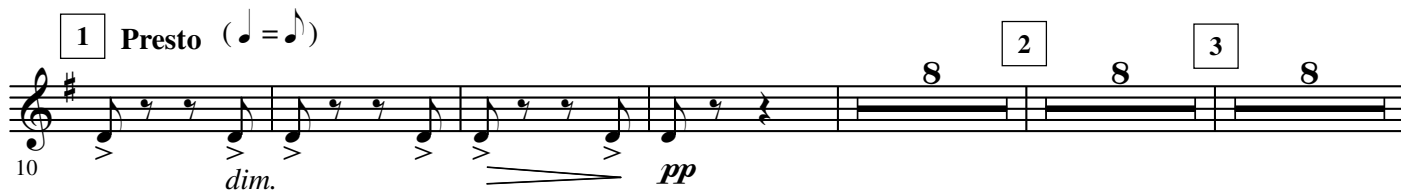
COLAS BREUGNON OVERTURE

from the Opera "Le Maître de Clamecy"

Dmitri KABALEVSKY Op. 24

Arr. José SCHYNS

Allegro ♩ = 132



© See full score

Authorized Edition: HAFABRA Music - Louis MARTINUS

84, Village / Dorp B- 3790 FOURONS / VOEREN (Belgium)

Tel. ++32(0)4.381.23.28 - Fax. ++32(0)4.381.23.52

www.hafabramusic.com

All rights reserved
for all countries

20
172
ff
sfp *cresc.*

21
180
sfz
sfp *cresc.*

22
188
sfz
11 8
ff

25 16 26 10
213

L'istesso tempo
(♩ = ♩)
27 8 28 8 29 12 30 9 allarg.
244

31 a tempo
282
ff

32

33
292
cresc.

34 allarg. Presto (♩ = ♩)
302
fff
10 8

36 12 37 7 38 5 39
324
f *sf* *f*

40
352

359 *cresc.* *f* *ff*

366 *sfz*

385 *ff*

414 *mf*

448

486 *f* *cresc.* *ff*

492

500

510 *fff* *sfz*

Measures 359-60 are shown across eight staves. The key signature is one sharp (F#). The score includes various musical notations such as slurs, accents, and dynamic markings. Measure numbers are indicated at the start of each staff. Boxed measure numbers 41 through 60 are placed above the staves. Rehearsal marks with measure counts (3, 7, 8, 8, 11, 8, 12, 4, 3) are present in measures 385, 414, 448, 486, 492, 500, and 510. Dynamic markings include *cresc.*, *f*, *ff*, *sfz*, *mf*, *fff*, and *sfz*.