

COLAS BREUGNON OVERTURE

E♭ Bass

from the Opera "Le Maître de Clamecy"

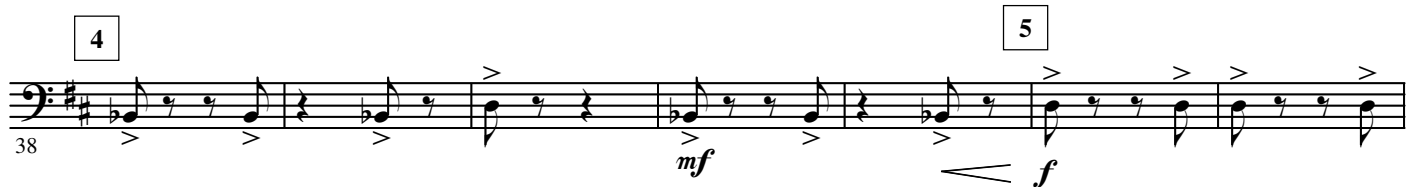
Dmitri KABALEVSKY Op. 24

Arr. José SCHYNS

Allegro ♩ = 132



1 Presto (♩ = ♩)



© See full score

Authorized Edition: **HAFABRA Music - Louis MARTINUS**
84, Village / Dorp B- 3790 FOURONS / VOEREN (Belgium)
Tel. ++32(0)4.381.23.28 - Fax. ++32(0)4.381.23.52
www.hafabramusic.com

All rights reserved
for all countries

2.

- E₅ Bass -

68 8 9

cresc. *f*

77 10

sf *mf*

86 11

cresc. *f* *ff*

95 12 13

sfz *f*

109 14

118 15

sfz *mf marc.*

127 16

cresc.

136 17 18 19 20

7 12 12

173 21

ff *sfp* *cresc.* *sfz*

183 22

sfp *cresc.* *sfz* *f*

3

195 23 3 3 24 div.

f *ff*

209

218 25 12 26

mp *dim.* *p* *dim.*

238 27 L'istesso tempo (♩ = ♩)

pp

246 28

256 29

mf

266 30

sf *p* *cresc.*

276 31 a tempo

f *ff*

allarg.

286 32 33

cresc.

296 34 allarg.

fff

4.

- E \flat Bass -

Presto (♩ = ♩)

306 **2** **f** **2**

316 **35** **36** **f** **2**

325

333 **37** **p**

341 **38** **mf** *cresc.* **f** <

349 **39** **sf** **f** **40**

357 *cresc.* **f**

364 **41** **ff** **42** **sfz** **7**

378 **43** **f** **44**


386 **45** **ff** **46** **7** *one cue St. B.* **pp**

400 **47** **8** **48** **pp**


415 49 **4**



426 **pp** 50 **4** **pp**




437 51 **2** **pp** 52 **3** **All** **p**



448 53 **3** *one cue St. B.* **ppp**



458 54 **All div.** **ppp**



466 55



474 *cresc.*



482 56 **f** *cresc.*



490 57 **ff**



498 58



506 59 **3** 60 **3** **fff** **sffz**

