

COLAS BREUGNON OVERTURE

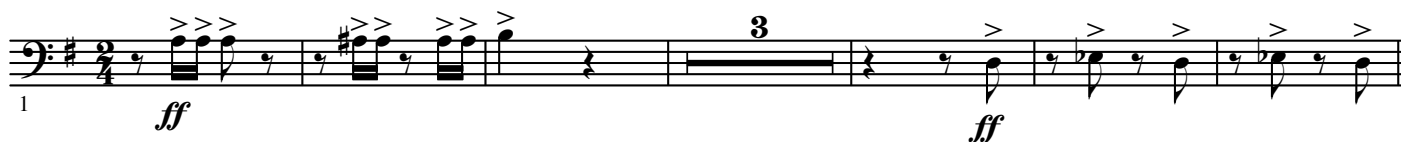
B \flat Euphonium bass clef

from the Opera "Le Maître de Clamecy"

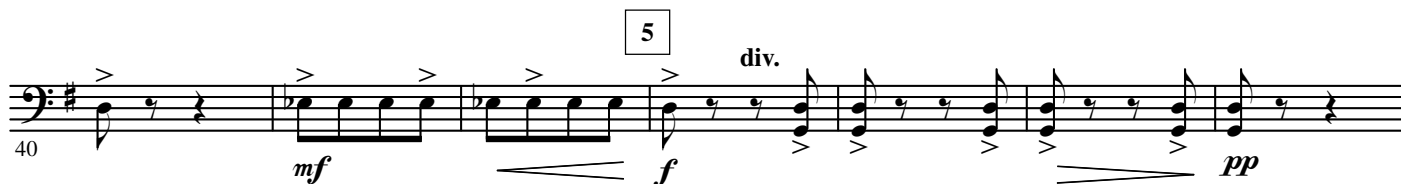
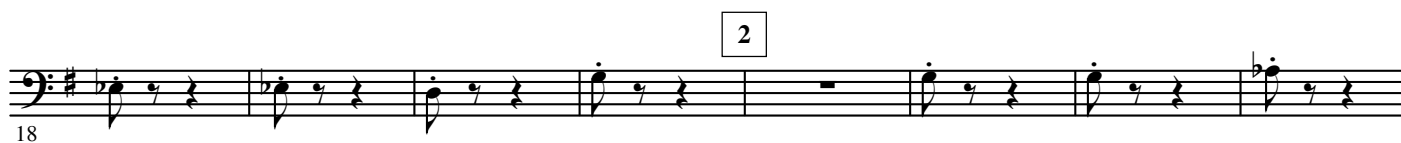
Dmitri KABALEVSKY Op. 24

Arr. José SCHYNS

Allegro $\text{half note} = 132$



1 **Presto** ($\text{half note} = \text{half note}$)



© See full score

Authorized Edition: **HAFABRA Music** - Louis MARTINUS
84, Village / Dorp B- 3790 FOURONS / VOEREN (Belgium)
Tel. ++32(0)4.381.23.28 - Fax. ++32(0)4.381.23.52
www.hafabramusic.com

All rights reserved
for all countries

2.

- B \flat Euphonium -

8

68

cresc.

9

75

*f**sf**f*

10

82

cresc.

11

89

*f**ff*

12

96

sfz

13

103

*ff**f*

14

110

15

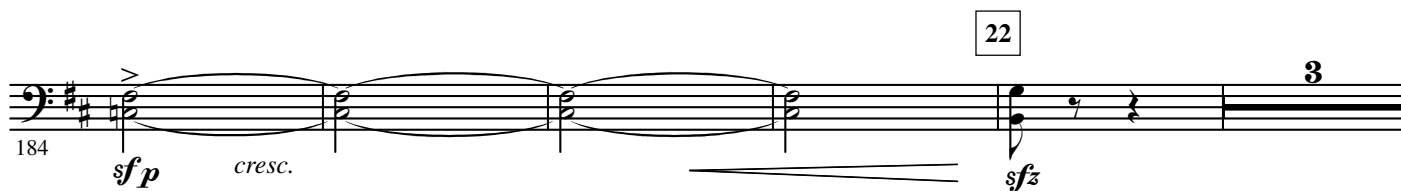
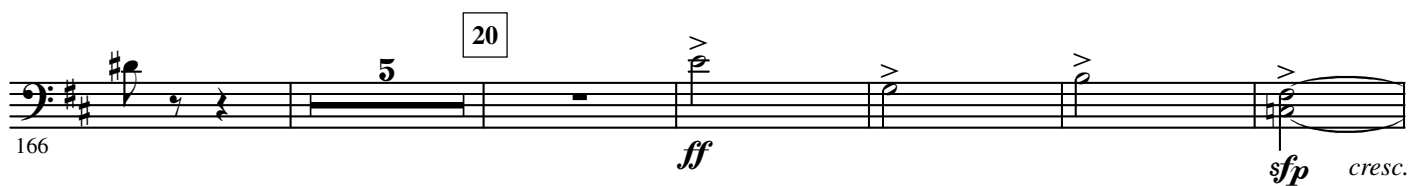
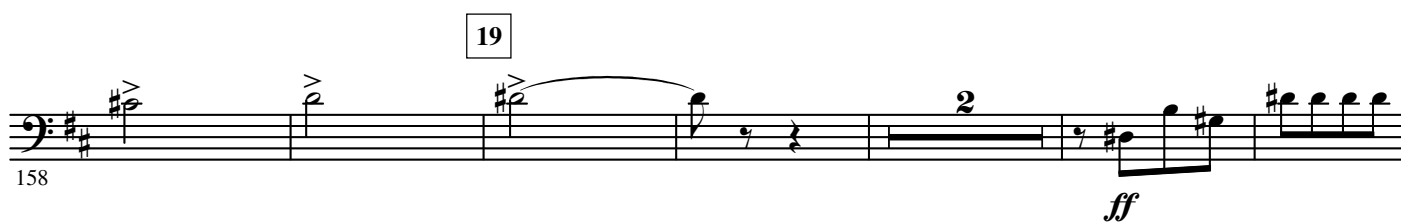
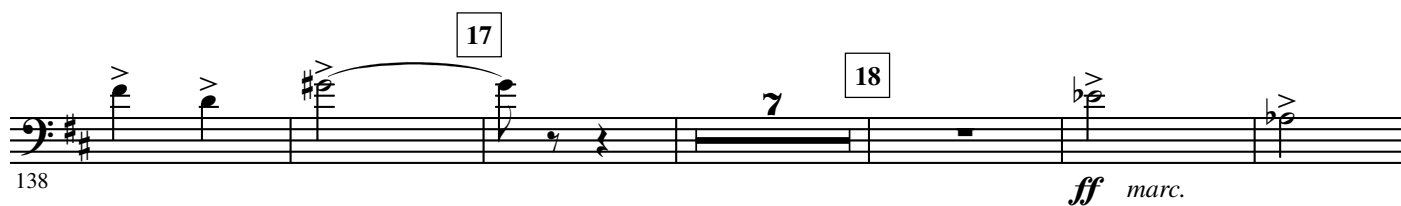
117

*sfz**mf marc.*

16

124

cresc.



4.

- B \flat Euphonium -

24

208 *ff*

25

215

223 *dim.*

26

232 *p* *dim.*

27 L'istesso tempo ($\text{♩} = \text{♩}$)
div. *leggerio*

240 *pp*

246

28

252 *cresc.*

29

258 *mf*

30

265 *sfp* *cresc.*

275

allarg.

31 a tempo

281 *ff*

32 288

33 *cresc.*

34 *allarg.* *fff* *Presto* (♩ = ♩) *f*

35 309

36 *div.* *f*

37 329 *p*

38 338 *mf cresc.*

39 347 *f*

40 357 *cresc.* *f* *ff*

41 366 *sfz*

42 375 *ff* *f*

43 384 *ff*

44 45 7

6.

- B \flat Euphonium -

46 8 47 8 48 8 49 8 50 8 51 5 52 3

398

53 3

446

54

456

55

464

56

474

57

482

58 div.

490

59

498

59 3 60 3

506