

COLAS BREUGNON OVERTURE

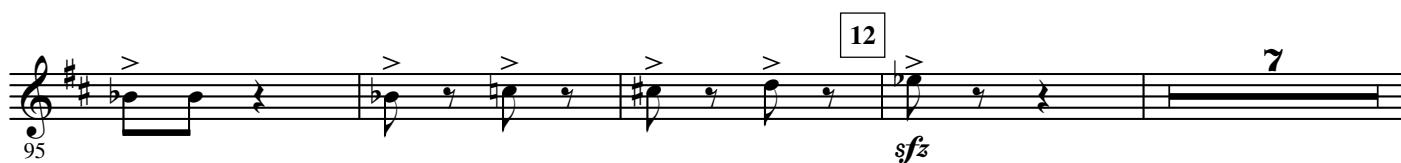
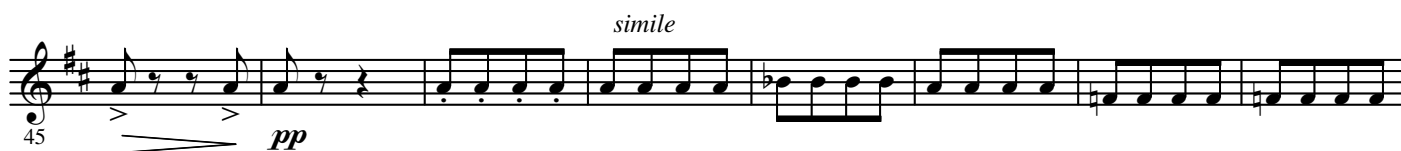
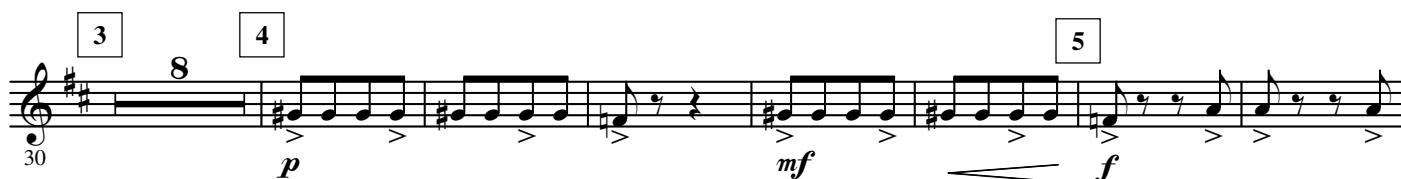
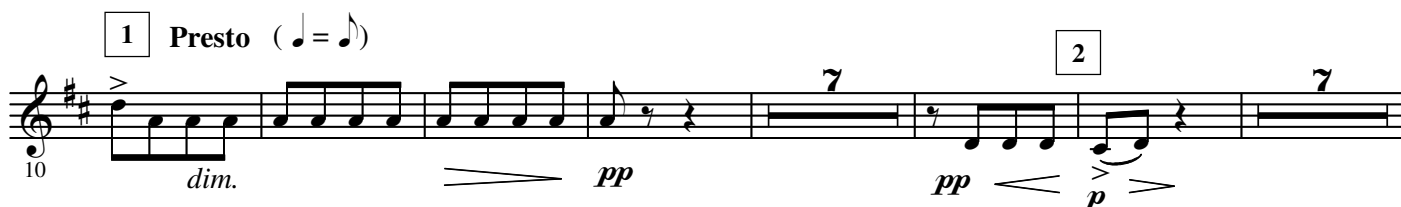
3rd E \flat Horn

from the Opera "Le Maître de Clamecy"

Dmitri KABALEVSKY Op. 24

Arr. José SCHYNS

Allegro $\text{♩} = 132$



© See full score

Authorized Edition: **HAFABRA Music** - Louis MARTINUS
84, Village / Dorp B- 3790 FOURONS / VOEREN (Belgium)
Tel. ++32(0)4.381.23.28 - Fax. ++32(0)4.381.23.52
www.hafabramusic.com

All rights reserved
for all countries

2.

- 3rd E \flat Horn -

13 *simile* 14

106 *f*

114 15 *sfz p sub.* 2

123 16 *cresc.* 2

133 17 *mf cresc.* 3

143 18 *cresc.* 11 19 *sfz ff*

161

169 20 *p cresc.* 3

179 21 *sfz p cresc.* 3 22 *sfz*

189 23 11 8 24 *ff*

214 25 16 26 10 27 *L'istesso tempo* (♩ = ♩) 8

252 28 8 29 *mf*

30

268 *sfp* *cresc.*

277 *f* *allarg.* 31 *a tempo* *ff*

283 32

289 33 *cresc.*

295 34 *fff* *allarg.* *Presto* (♩ = ♩) 2

301 35 *f* 2

308 36 2 37 12 *p*

317 38 *mf* *cresc.*

337 39 6 40 6

345

362 *f* *ff*

370 *sfz* *f* *simile*

385 *ff*

406 *mf* *p*

414 *pp* *pp*

435 *pp*

462 *p* *cresc.*

477 *mf* *f* *cresc.*

486 *ff*

495

506 *fff* *sfz*

Measures 362-506 are shown across ten staves. The key signature is one sharp (F#). The score includes various dynamics (*f*, *ff*, *sfz*, *mf*, *p*, *pp*, *fff*) and articulations (*cresc.*). Rehearsal marks 41 through 60 are indicated in boxes. Rhythmic values 7, 8, 4, 2, 11 are noted above certain measures. The piece concludes with a double bar line at measure 506.